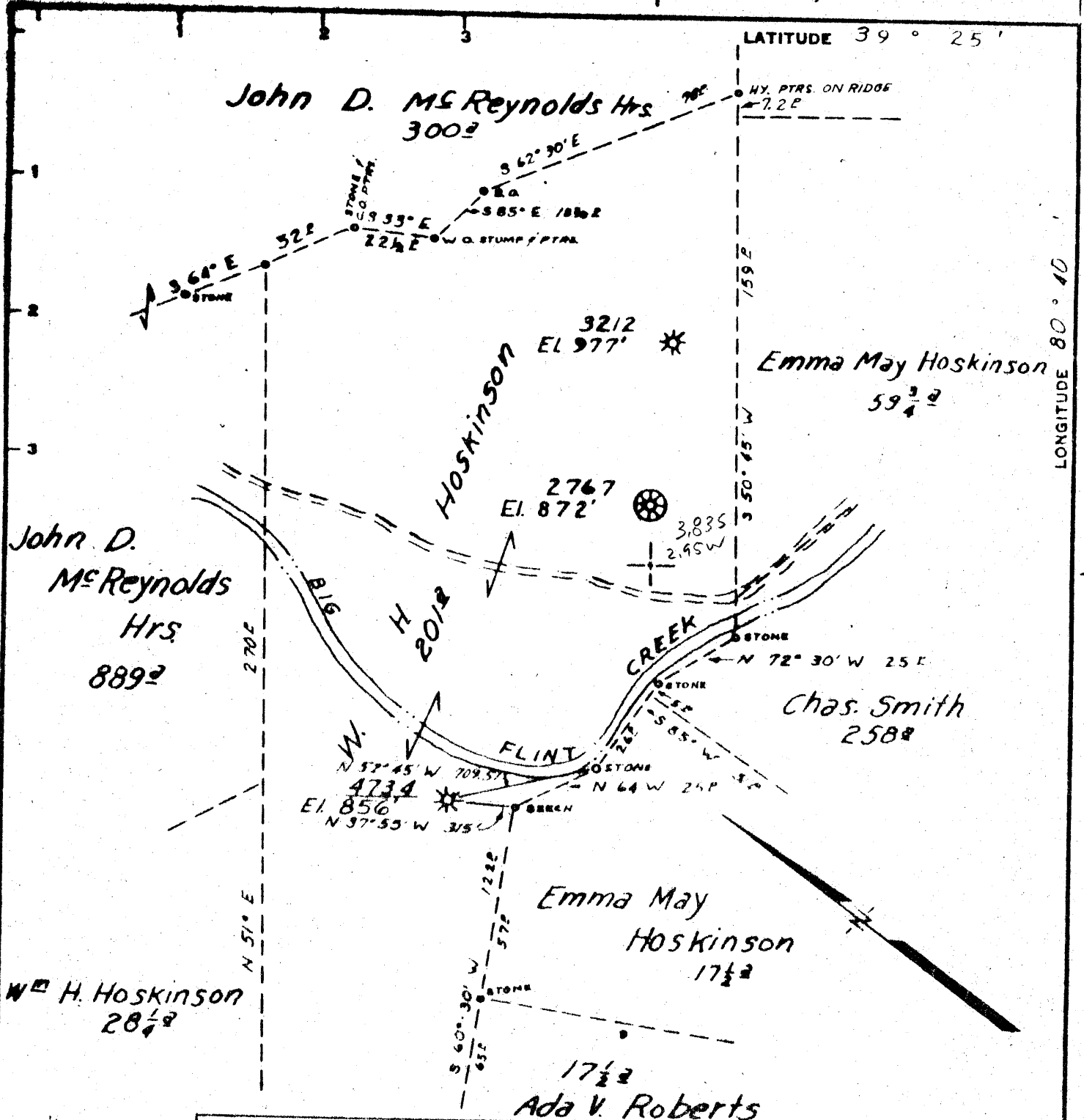


LATITUDE 39° 25'

LONGITUDE 80° 40'



7.5' loc  
 1.02 S 39 2230  
 0.70 W 804230  
 15' loc calc  
 3.90 S  
 2.93 W  
 New Location   
 Drill Deeper   
 Abandonment  4734

Minimum Error of Closure 1' in 200'  
 Source of Elevation Consolidated Gas Supply Corp. Well No 2767  
 EL 872'  
 "I, the undersigned, hereby certify that this map is correct to the best of my knowledge and belief and shows all the information required by paragraph 6 of the rules and regulations of the oil and gas section of the mining laws of West Virginia."

MAP SHEET 33, 5-6 W-6  
 FB 672 P 36-39

Company Consolidated Gas Supply Corp.  
 Address Clarksburg, West Va.  
 Farm W. H. Hoskinson  
 Tract \_\_\_\_\_ Acres 201 Lease No. 74L  
 Well (Farm) No. \_\_\_\_\_ Serial No. 4734  
 Elevation (Spirit Level) 856'  
 Quadrangle Centerpoint W.C.  
 County Doddridge District Grant  
 Engineer Jackson M. Jervis  
 Engineer's Registration No. 2377  
 File No. \_\_\_\_\_ Drawing No. \_\_\_\_\_  
 Date Dec. 67 Scale 1" = 40'

STATE OF WEST VIRGINIA  
 DEPARTMENT OF MINES  
 OIL AND GAS DIVISION  
 CHARLESTON

**WELL LOCATION MAP**  
 FILE NO Dod-1207-A

+ Denotes location of well on United States Topographic Maps, scale 1 to 62,500, latitude and longitude lines being represented by border lines as shown.  
 - Denotes one inch spaces on border line of original tracing.