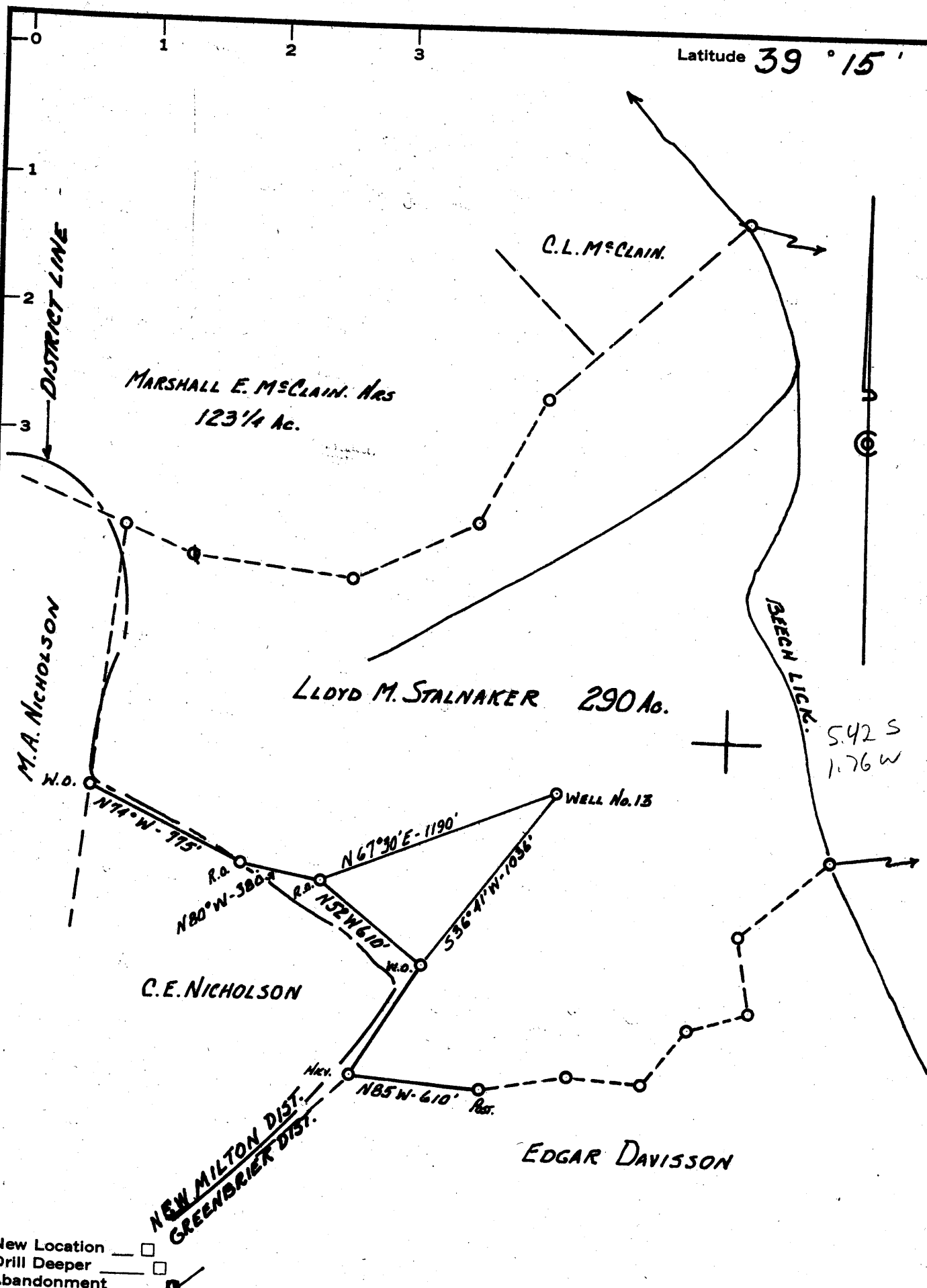


Latitude 39° 15'

Longitude 80° 35'



- New Location
- Drill Deeper
- Abandonment

FORMER SOUTH PENN OIL CO. LEASE # 8076B

Company PACK & JACKSON
 Address Box 175 - HAMLIN, W.VA.
 Farm LLOYD M. STALAKER
 Tract _____ Acres 290 Lease No. _____
 Well (Farm) No. 13 Serial No. _____
 Elevation (Spirit Level) 1116'
 Quadrangle VADIS
 County DODDRIDGE District GREENBRIER
 Engineer John M. Hamilton
 Engineer's Registration No. 2274
 File No. _____ Drawing No. _____
 Date MAR. 24, 1962 Scale 1" = 600'

STATE OF WEST VIRGINIA
 DEPARTMENT OF MINES
 OIL AND GAS DIVISION
 CHARLESTON

WELL LOCATION MAP
 FILE NO. DOD-1165-A

- + Denotes location of well on United States Topographic Maps, scale 1 to 62,500, latitude and longitude lines being represented by border lines as shown.
- Denotes one inch spaces on border line of original tracing.