

0 1 2 3 LATITUDE 38 ° 25 ' 1

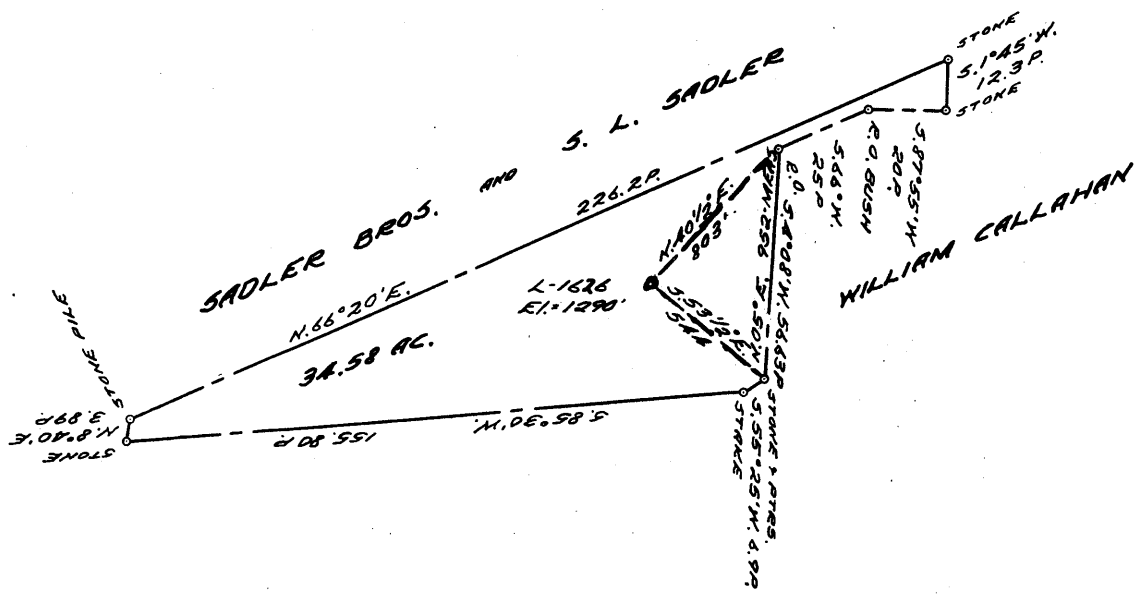
1

2

3

LONGITUDE 80 ° 35 '

76.5
067.02



COAL OWNED BY _____

NEW LOCATION.....

DRILL DEEPER.....

ABANDONMENT.....

Q-25-24

COMPANY THE MANUFACTURERS LIGHT & HEAT

ADDRESS 800 UNION TRUST BLDG., PGH., PA.

FARM T. E & IVY CHIPPS

TRACT _____ ACRES 34 LEASE No. 4599

WELL (FARM) No. 1 SERIAL No. 1626

ELEVATION (SPIRIT LEVEL) 1290'

QUADRANGLE CENTERPOINT

COUNTY ODDORIDGE DISTRICT MCCLELLAN

ENGINEER Robert M. Heull

ENGINEER'S REGISTRATION No. 361-E (TEV.)

FILE No. _____ DRAWING No. Y-25-351

DATE 25 MAY 61 SCALE 1" = 800'

STATE OF WEST VIRGINIA
DEPARTMENT OF MINES
OIL AND GAS DIVISION
CHARLESTON

WELL LOCATION MAP

FILE No. DOD-1157-A

+ DENOTES LOCATION OF WELL ON UNITED STATES TOPOGRAPHIC MAPS, SCALE 1 TO 62,500. LATITUDE AND LONGITUDE LINES BEING REPRESENTED BY BORDER LINES AS SHOWN.

- DENOTES ONE INCH SPACES ON BORDER LINE OF ORIGINAL TRACING.



1104

STATE OF WEST VIRGINIA
DEPARTMENT OF MINES
OIL AND GAS DIVISION

Centerpoint
Quadrangle

Permit No. 1657-A

WELL RECORD

Oil or Gas Well **GAS**

(KIND)

Company The Mfrs. Light and Heat Co.
Address 800 Union Trust Bldg., Pittsburgh 19, Pa.
Farm T. E. & Ivy Chippis Acres 34
Location (waters) _____
Well No. 1626 Elev. 1290
District McClellan County Doddridge
The surface of tract is owned in fee by _____
Address _____
Mineral rights are owned by _____
Address _____
Drilling commenced July 29, 1913
Drilling completed November 19, 1913
Date Shot _____ From _____ To _____
With _____
Open Flow- /10ths Water in _____ Inch
/10ths Merc. in _____ Inch
Volume _____ Cu. Ft.
Rock Pressure 110 lbs. 1 hrs.
Oil _____ bbls., 1st 24 hrs.
Fresh water _____ feet _____ feet
Salt water _____ feet _____ feet

| Casing and Tubing | Used in Drilling | Left in Well | Packers |
|-------------------|------------------|--------------|----------------|
| Size | | | Kind of Packer |
| 16 | | | |
| 13 | | | |
| 10 | 335' | | Size of |
| 8 1/2" | 1470' | 1478' | Depth set |
| 6 5/8" | 2265' 6" | 2265' 6" | |
| 5 3/16 | | | |
| 3 | | | Perf. top |
| 2 | | 3144' | Perf. bottom |
| Liners Used | | | Perf. top |
| | | | Perf. bottom |

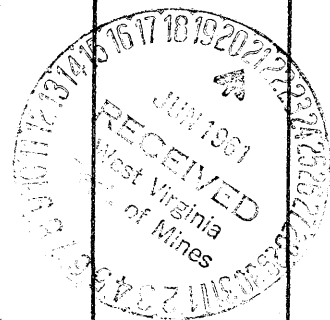
CASING CEMENTED _____ SIZE _____ No. Ft. _____ Date _____

COAL WAS ENCOUNTERED AT 1010 FEET _____ INCHES

FEET INCHES FEET INCHES

FEET INCHES FEET INCHES

| Formation | Color | Hard or Soft | Top | Bottom | Oil, Gas or Water | Depth Found | Remarks |
|---------------------------|-------|--------------|-------|-----------|---------------------------|-------------|---------|
| | | THICKNESS | | | | | |
| Native Coal | | 6' | 470' | 476' | | | |
| Pgh. Coal | | 6' | 1010' | 1016' | | | |
| Little Dunkard -gray, hd. | | 60' | 1415' | 1475 1/2' | A little water in Coal | | |
| Big Dunkard-Wt., hd. | | 30' | 1540' | 1570' | | | |
| Gas Sand, Gray, hd. | | 15' | 1600' | 1615' | | | |
| 1st Salt Sand, Wt., hd. | | 50' | 1895' | 1945' | Water 1900' | | |
| Maxon | | 58' | 2132' | 2190' | | | |
| Little Lime, gray, hd. | | 40' | 2200' | 2240' | | | |
| Pencil Cave, gray, sft. | | 15' | 2240' | 2255' | | | |
| Big Lime, Gray, hd. | | 50' | 2255' | 2305' | | | |
| Big Injun, Gray, hd. | | 130' | 2305' | 2435' | Gas 2307' Small show | | |
| Berea, Gray, hd. | | 25' | 2560' | 2585' | | | |
| Fifty Foot, Wt., sft. | | 6' | 2910' | 2916' | Gas 2912' Small show | | |
| Thirty Ft., Wt., hd. | | 20' | 2992' | 3012' | | | |
| Gordon Stray | | 3' | 3074' | 3077' | | | |
| Gordon, Wt., sft. | | 15' | 3085' | 3100' | | | |
| Gas | | 5' | 3087' | 3092' | Gordon Gas 3087' to 3092' | | |
| Fourth | | 1' | 3120' | 3121' | Total Depth 3126' | | |



APR 6 1962

