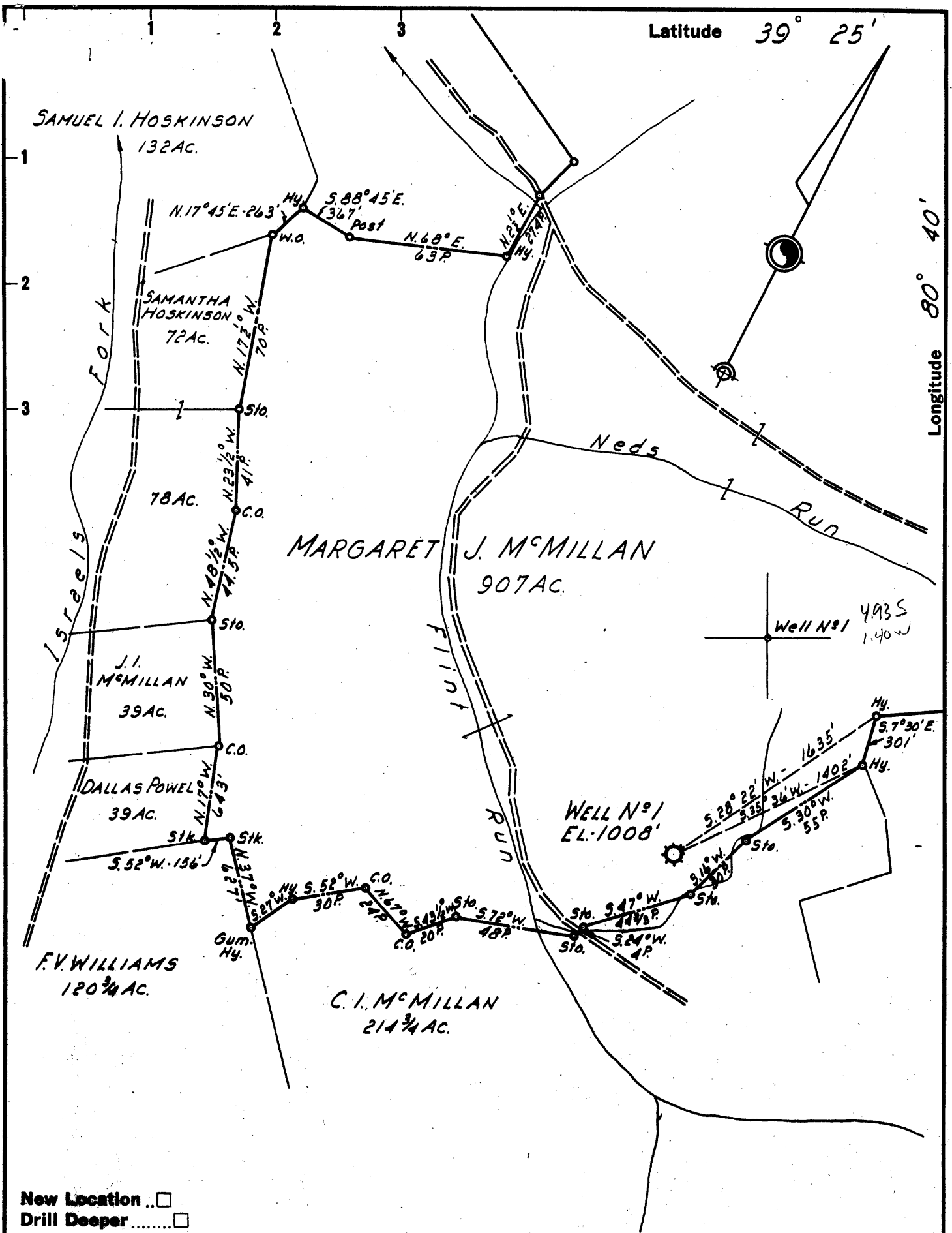


Latitude 39° 25'

Longitude 80° 40'



- New Location ..
- Drill Deeper ..
- Abandonment ..

Formerly Hope Natural Gas Co. Well No 2001

Company	LURAYLAND, INC.
Address	POINT PLEASANT, WEST VA.
Farm	MARGARET J. McMILLAN
Tract	Acres 907 Lease No.
Well (Farm) No.	1 Serial No. 2001
Elevation (Spirit Level)	1008'
Quadrangle	CENTERPOINT
County	DODDRIDGE District GRANT
Engineer	H.P. SUTER
Engineer's Registration No.	1805
File No.	Drawing No.
Date	14 JUNE 1959 Scale 1" = 50 POLES

STATE OF WEST VIRGINIA  
 DEPARTMENT OF MINES  
 OIL AND GAS DIVISION  
 CHARLESTON

**WELL LOCATION MAP**  
 FILE NO. DOD-1112-B

+ Denotes location of well on United States Topographic Maps, scale 1 to 62,500, latitude and longitude lines being represented by border lines as shown.

- Denotes one inch spaces on border line of original tracing.

72831 on CNG map



1007

STATE OF WEST VIRGINIA  
DEPARTMENT OF MINES  
OIL AND GAS DIVISION

Quadrangle Bentpoint  
Permit No. 1112-A

WELL RECORD

Oil or Gas Well \_\_\_\_\_ (KIND)

Company LaRay Land, Inc. (Hole No. 5 well)  
Address Charleston, W. Va.  
Farm Margaret J. McMillan Acres 907  
Location (waters) \_\_\_\_\_  
Well No. 2001 Elev. 1008  
District Grant County Doddridge  
The surface of tract is owned in fee by \_\_\_\_\_  
Address \_\_\_\_\_  
Mineral rights are owned by \_\_\_\_\_  
Address \_\_\_\_\_  
Drilling commenced 9/6/1910  
Drilling completed 11/28/1910  
Date Shot 6/9/21 From 30 qts To Gorden  
With 12/12/40 40 qts Injun  
Open Flow \_\_\_\_\_ /10ths Water in \_\_\_\_\_ Inch  
\_\_\_\_\_ /10ths Merc. in \_\_\_\_\_ Inch  
Volume \_\_\_\_\_ Cu. Ft.  
Rock Pressure \_\_\_\_\_ lbs. \_\_\_\_\_ hrs.  
Oil \_\_\_\_\_ bbls., 1st 24 hrs.  
WELL ACIDIZED \_\_\_\_\_  
WELL FRACTURED \_\_\_\_\_

Casing and Tubing	Used in Drilling	Left in Well	Packers
Size			Kind of Packer
16			
13			6x8 B.H. 1880'
10	324'	- 0 -	Size of 6-5/8 x 3 1/2
8 1/4	1023'	1023'	1937'
6 3/8	1880'	1880'	Depth set
5 3/16			
3	2737'	2737'	Perf. top
2			Perf. bottom
Liners Used			Perf. top
			Perf. bottom

CASING CEMENTED \_\_\_\_\_ SIZE \_\_\_\_\_ No. Ft. \_\_\_\_\_ Date \_\_\_\_\_  
COAL WAS ENCOUNTERED AT 293 FEET \_\_\_\_\_ INCHES  
545 FEET \_\_\_\_\_ INCHES FEET \_\_\_\_\_ INCHES  
\_\_\_\_\_ FEET \_\_\_\_\_ INCHES FEET \_\_\_\_\_ INCHES

RESULT AFTER TREATMENT \_\_\_\_\_  
ROCK PRESSURE AFTER TREATMENT \_\_\_\_\_  
Fresh Water \_\_\_\_\_ Feet \_\_\_\_\_ Salt Water \_\_\_\_\_ Feet \_\_\_\_\_

Formation	Color	Hard or Soft	Top	Bottom	Oil, Gas or Water	Depth	Remarks
Native Coal			293'	298'			
Pittsburgh Coal			545'	548'			
Dunkard Sand			945'	1150'	970'-1020'		
Gas Sand			1150'	1275'	1365'-1475'		
Salt Sand			1330'	1530'			
Maxon Sand			1650'	1670'			
Lt. Lime			1833'	1850'			
Big Lime			1860'	1963'			
Injun Sand			1963'	2051'			
Gorden Sand			2650'	2672'			
TOTAL DEPTH				2703'			

RECEIVED  
WEST VIRGINIA  
DEPT. OF MINES  
NOV 5 1959

Formation	Color	Hard or Soft	Top	Bottom	Oil, Gas or Water	Depth Found	Remarks

Date June 4, 19 59  
 APPROVED Lee Ray Land, Inc. Owner  
 By Byron M. French  
 (Title) Consultant