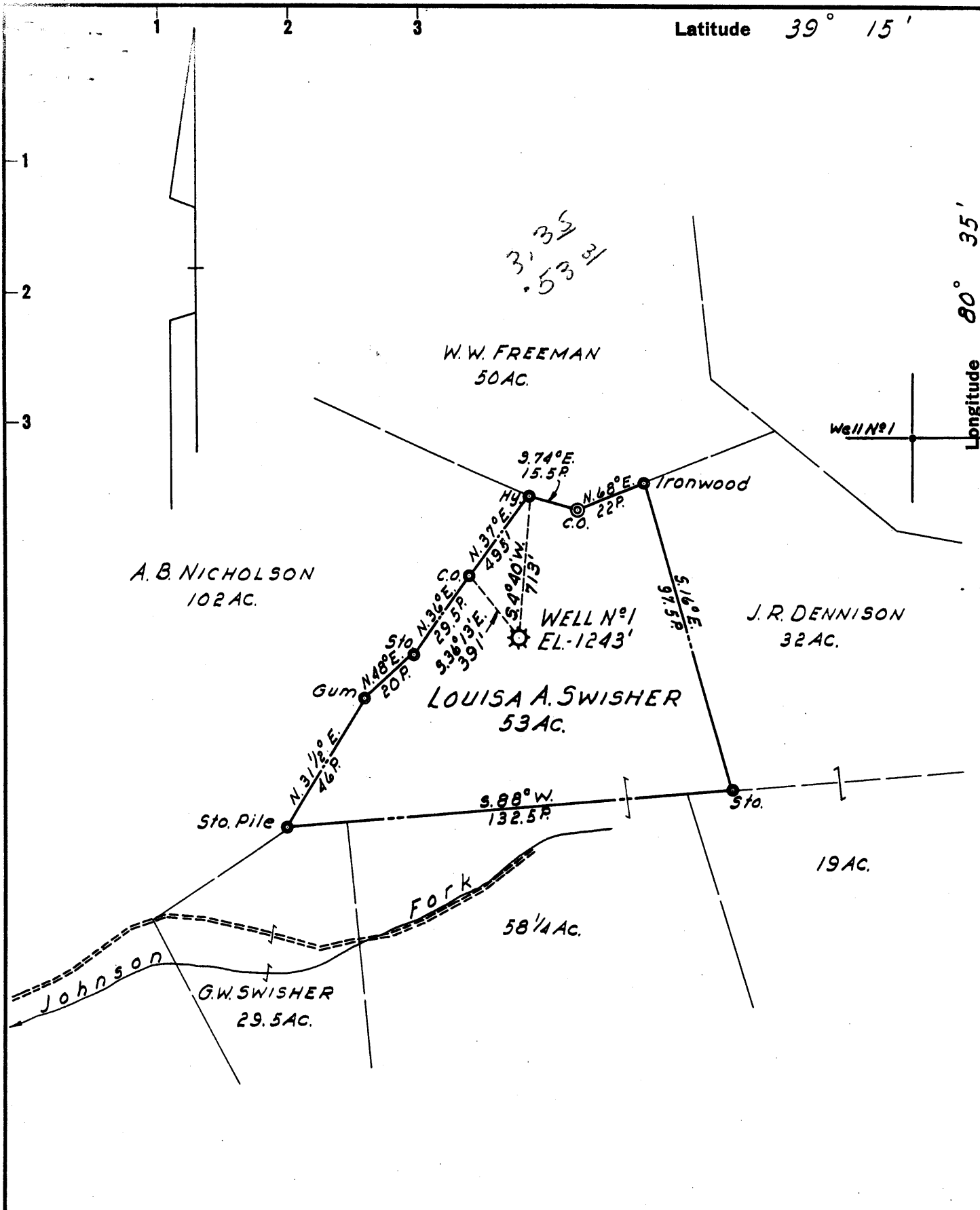


Latitude 39° 15'

Longitude 80° 35'



3' 33 31  
3' 53 31

W.W. FREEMAN  
50 AC.

A.B. NICHOLSON  
102 AC.

LOUISA A. SWISHER  
53 AC.

J.R. DENNISON  
32 AC.

Sto. Pile  
N. 31 1/2° E.  
46 P.  
G.W. SWISHER  
29.5 AC.

WELL N°1  
EL-1243'

S. 88° W.  
132.5 P.

Fork  
58 1/4 AC.

19 AC.

- New Location ..
- Drill Deeper .....
- Abandonment.....

Formerly Hope Natural Gas Co. Well N° 3147

Company LURAY LAND, INC.  
 Address POINT PLEASANT, WEST VA.  
 Farm LOUISA A. SWISHER  
 Tract \_\_\_\_\_ Acres 53 Lease No. \_\_\_\_\_  
 Well (Farm) No. 1 Serial No. 3147  
 Elevation (Spirit Level) 1243'  
 Quadrangle VADIS  
 County DODDRIDGE District GREENBRIER  
 Engineer H.P. SUTER  
 Engineer's Registration No. 1805  
 File No. \_\_\_\_\_ Drawing No. \_\_\_\_\_  
 Date 26 JUNE, 1959 Scale 1"=40 POLES

STATE OF WEST VIRGINIA  
DEPARTMENT OF MINES  
OIL AND GAS DIVISION  
CHARLESTON

WELL LOCATION MAP  
FILE NO. DOD-1103-A

+ Denotes location of well on United States Topographic Maps, scale 1 to 62,500, latitude and longitude lines being represented by border lines as shown.

- Denotes one inch spaces on border line of original tracing.



1079

STATE OF WEST VIRGINIA  
DEPARTMENT OF MINES  
OIL AND GAS DIVISION

Quadrangle W. Va.  
Permit No. 1103-A

WELL RECORD

Oil or Gas Well Oil (KIND)

Company Lurray Land Company  
Address Room 40 - Capital City Bldg., Charleston, W. Va.  
Farm Louisa A. Swisher Acres 53  
Location (waters) \_\_\_\_\_  
Well No. 3147 Elev. 1172  
District Greenbrier County Doddridge  
The surface of tract is owned in fee by \_\_\_\_\_  
Address \_\_\_\_\_  
Mineral rights are owned by \_\_\_\_\_  
Address \_\_\_\_\_  
Drilling commenced Aug. 1, 1913  
Drilling completed Dec. 13, 1913  
Date Shot 11-2-23 From \_\_\_\_\_ To \_\_\_\_\_  
With 10 Qts. Gordon Sand  
Open Flow /10ths Water in \_\_\_\_\_ Inch  
/10ths Merc. in \_\_\_\_\_ Inch  
Volume 201,600 Cu. Ft.  
Rock Pressure \_\_\_\_\_ lbs. \_\_\_\_\_ hrs.  
Oil \_\_\_\_\_ bbls., 1st 24 hrs.  
WELL ACIDIZED \_\_\_\_\_  
WELL FRACTURED \_\_\_\_\_

Casing and Tubing	Used in Drilling	Left in Well	Packers
Size			Kind of Packer
16			B. H.
13			Size of
10 Casing	802	Left In	5 x 3
8 1/4 Casing	1431	Left In	Depth set
6 5/8 Casing	2213' 3"	Left In	2872'
5 3/16 Casing	2832	Left In	Pulled
3 Tubing	335' 12"	225' 4"	Perf. bottom
2 Tubing	5744' 17"	Pulled	Perf. top
Liners Used		2717' 8"	Perf. bottom

CASING CEMENTED \_\_\_\_\_ SIZE \_\_\_\_\_ No. Ft. \_\_\_\_\_ Date \_\_\_\_\_

COAL WAS ENCOUNTERED AT \_\_\_\_\_ FEET \_\_\_\_\_ INCHES  
\_\_\_\_\_ FEET \_\_\_\_\_ INCHES FEET \_\_\_\_\_ INCHES  
\_\_\_\_\_ FEET \_\_\_\_\_ INCHES FEET \_\_\_\_\_ INCHES

RESULT AFTER TREATMENT \_\_\_\_\_  
ROCK PRESSURE AFTER TREATMENT \_\_\_\_\_  
Fresh Water \_\_\_\_\_ Feet Salt Water \_\_\_\_\_ Feet

Formation	Color	Hard or Soft	Top	Bottom	Oil, Gas or Water	Depth	Remarks
Pittsburgh Coal			841	847			
Dunkard Sand			1219	1330			
Salt Sand			1585	1932			
Injun Sand			2265	2363			
Berea Sand			2602	2631			
Thirty Foot Sand			2827	2845	Gas @ 2840		
Stray Sand			2907	2929	Gas @ 2910		
Gordon Sand			2946	2960	Gas @ 2949+53		
Fourth Sand			2966	2970			
TOTAL DEPTH				2925			
			Deeper	3000			



MAR 26 1960

Formation	Color	Hard or Soft	Top	Bottom	Oil, Gas or Water	Depth Found	Remarks

Date June 3, 19 59

APPROVED L. Ray Land, Inc., Owner

By Byron M. Finch  
(Title) Co