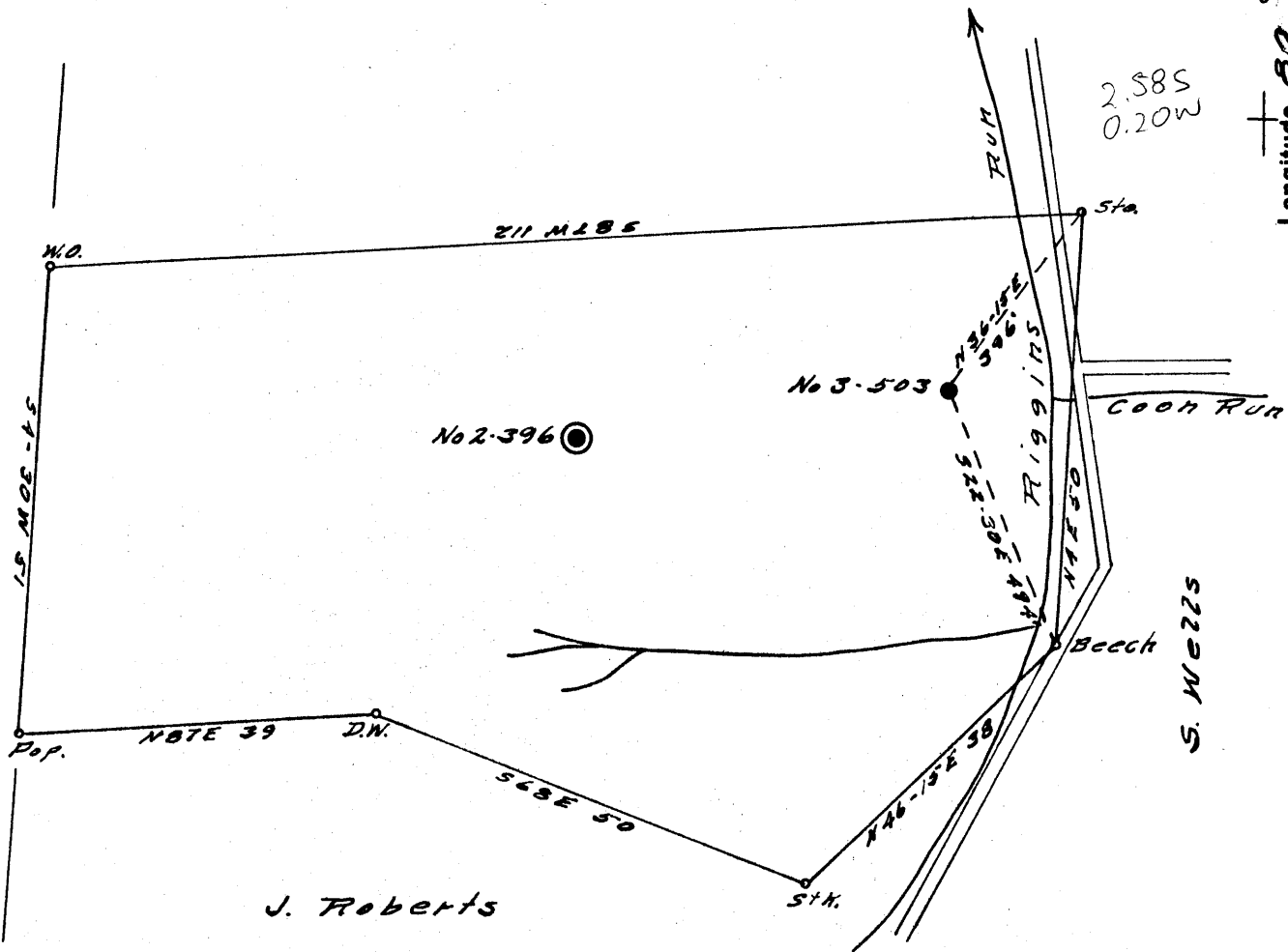


Latitude 39° 25'

Longitude 80° 40'

J. R. Roberts

R. T. Lowchds



New Location..   
 Drill Deeper.....   
 Abandonment.....

Company CARNEGIE NATURAL GAS  
 Address PITTSBURGH Pa.  
 Farm N. W. THOMAS  
 Tract \_\_\_\_\_ Acres 50 Lease No. E 8440-50  
 Well (Farm) No. 3 Serial No. E 503  
 Elevation (Spirit Level) 858  
 Quadrangle CENTERPOINT N.W.  
 County DODDRIDGE District McCLELLAN  
 Engineer J. R. Roberts  
 Engineer's Registration No. 1850  
 File No. \_\_\_\_\_ Drawing No. \_\_\_\_\_  
 Date 1-9-58 Scale 1" = 20 Feet

STATE OF WEST VIRGINIA  
 DEPARTMENT OF MINES  
 OIL AND GAS DIVISION  
 CHARLESTON

WELL LOCATION MAP  
 FILE NO. DOD-1078-A

+ Denotes location of well on United States Topographic Maps, scale 1 to 62,500, latitude and longitude lines being represented by border lines as shown.

- Denotes one inch spaces on border line of original tracing.



STATE OF WEST VIRGINIA  
DEPARTMENT OF MINES  
OIL AND GAS DIVISION

1036

Permit No. 1078-A

WELL RECORD  
WELL TO BE ABANDONED

Oil or Gas Well Oil  
(KIND)

Company Carnegie Natural Gas Company  
Address 1015 Frick Building, Pgh. 19, Pa.  
Farm N. W. Thomas Acres 50  
Location (waters) Riggins Run  
Well No. 3-503 Elev. 858  
District McClellan County Doddridge  
The surface of tract is owned in fee by Lester Thomas, et al, West Union, West Virginia  
Mineral rights are owned by See Below

Drilling commenced 3/19/53  
Drilling completed 4/17/53  
Date Shot 10/29/53 From 1975 To 1985  
With 30 quarts  
Open Flow 6 /10ths Water in 6-5/8th Inch  
/10ths Merc. in \_\_\_\_\_ Inch  
Volume \_\_\_\_\_ Cu. Ft.  
Rock Pressure \_\_\_\_\_ lbs. \_\_\_\_\_ hrs.  
Oil 2 bbls., 1st 24 hrs.  
Fresh water \_\_\_\_\_ feet \_\_\_\_\_ feet  
Salt water 1,300 feet \_\_\_\_\_ feet

Casing and Tubing	Used in Drilling	Left in Well	Packers
Size			
16			Kind of Packer
13			
10	328	None	Size of
8 1/4	930	930	
6 5/8	1789	1789	Depth set
5 3/16			
3			Perf. top
2			Perf. bottom
Liners Used			Perf. top
			Perf. bottom

CASING CEMENTED \_\_\_\_\_ SIZE \_\_\_\_\_ No. Ft. \_\_\_\_\_ Date \_\_\_\_\_  
COAL WAS ENCOUNTERED AT 480 FEET \_\_\_\_\_ INCHES  
\_\_\_\_\_ FEET \_\_\_\_\_ INCHES FEET \_\_\_\_\_ INCHES  
\_\_\_\_\_ FEET \_\_\_\_\_ INCHES FEET \_\_\_\_\_ INCHES

Formation	Color	Hard or Soft	Top	Bottom	Oil, Gas or Water	Depth Found	Remarks
Pgh. Coal			480	482			
Little Dunkard			775	800			
Big Dunkard			920	935			
Gas Sand			1100	1200			
1st Salt Sand			1280	1325	Water	1300-1320	
2nd Salt Sand			1345	1470			
Maxon Sand			1635	1685			
Little Lime			1765	1780			
Pencil Cave			1780	1785			
Big Lime			1785	1892			
Big Injun			1892	2034	Gas Oil	1965 1975	
TOTAL DEPTH				2018 <i>(Handwritten)</i>			

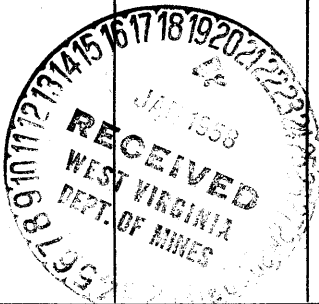
Mineral rights are owned by:

Lester Thomas  
West Union, W. Va.

Pearl Underwood  
West Union, W. Va.

Fay Thomas  
West Union, W. Va.

A. L. Thomas  
West Union, W. Va.



Formation	Color	Hard or Soft	Top	Bottom	Oil, Gas or Water	Depth Found	Remarks

Date January 16, 19 58

CARNEGIE NATURAL GAS COMPANY

APPROVED \_\_\_\_\_, Owner

By *W.A. Archer*  
(Title) Land Agent