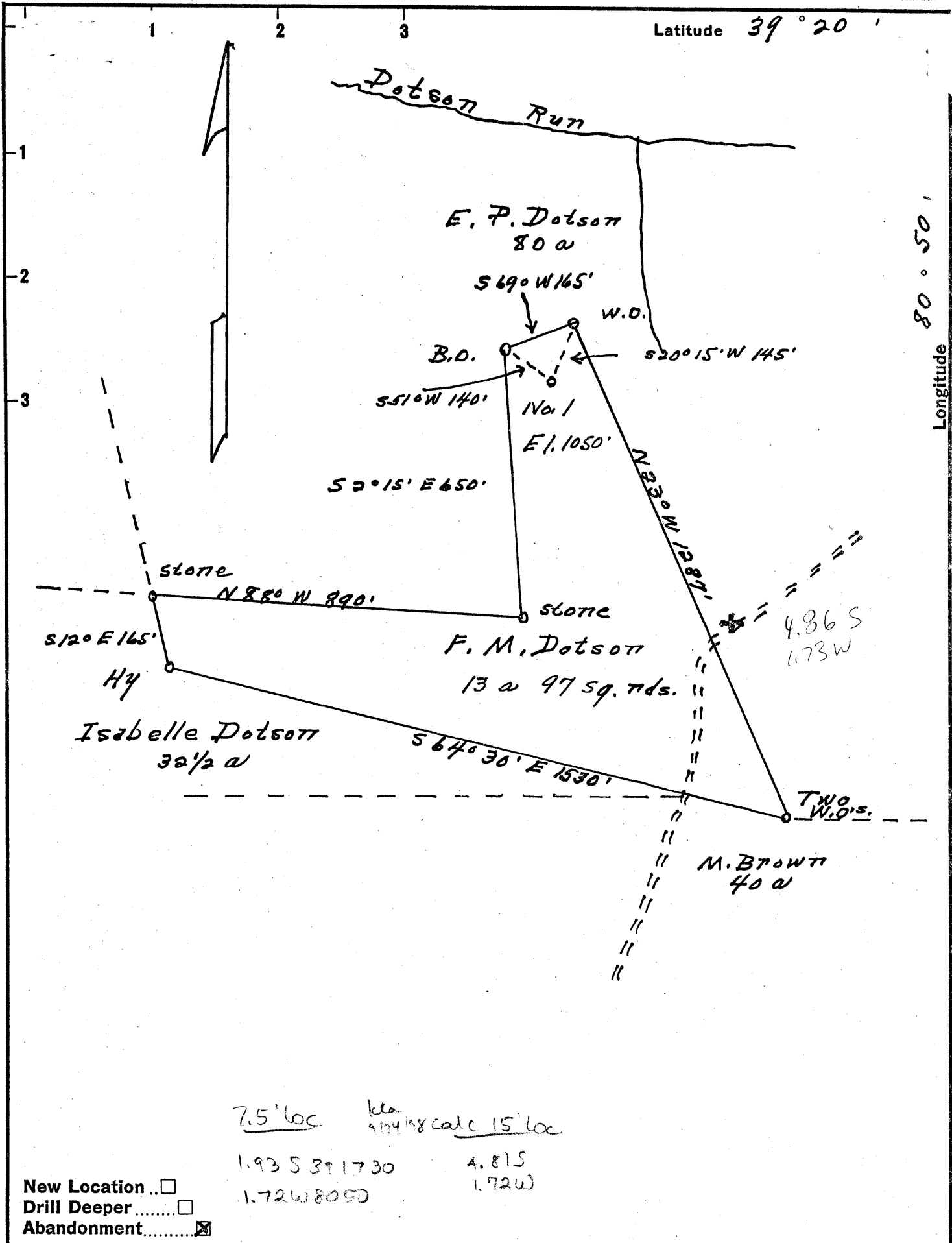


Latitude 39° 20'

Longitude 80° 50'



7.5' loc <sup>165</sup> 1.93 S 39 1730 4.81 S 1.72 W 8050  
 1.72 W 8050 4.81 S 1.72 W

New Location ..   
 Drill Deeper .....   
 Abandonment .....

Company Richter Oil Co  
 Address Brookard, W. Va.  
 Farm F. M. Dotson  
 Tract \_\_\_\_\_ Acres 13 Lease No. \_\_\_\_\_  
 Well (Farm) No. 1 Serial No. \_\_\_\_\_  
 Elevation (Spirit Level) 1050  
 Quadrangle West Union  
 County Doddridge District Center  
 surveyed by Holly Nester  
 Engineer Donald W. Morris  
 Engineer's Registration No. 1653  
 File No. \_\_\_\_\_ Drawing No. \_\_\_\_\_  
 Date 7/22/57 Scale 1" = 300'

STATE OF WEST VIRGINIA  
 DEPARTMENT OF MINES  
 OIL AND GAS DIVISION  
 CHARLESTON

**WELL LOCATION MAP**  
 FILE NO. DOD-1074-R AB  
 was 017 51369

+ Denotes location of well on United States Topographic Maps, scale 1 to 62,500, latitude and longitude lines being represented by border lines as shown.

- Denotes one inch spaces on border line of original tracing.



STATE OF WEST VIRGINIA  
DEPARTMENT OF MINES  
OIL AND GAS DIVISION

*1022*

Quadrangle West Union

**WELL RECORD**

Permit No. 1074 A

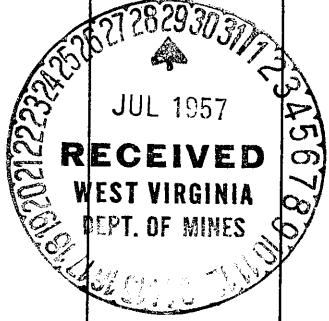
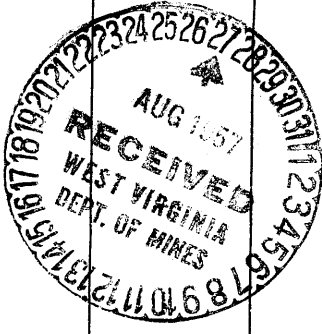
Oil or Gas Well Oil  
(KIND)

Company Richter Oil Company  
Address Brohard, West Virginia  
Farm R.M. Dotson Acres 13  
Location (waters) Dotson Run  
Well No. 1 Elev. 1050  
District Cebter County Doddridge  
The surface of tract is owned in fee by R.M. Dotson Heirs  
Address Greenwood, W.Va.  
Mineral rights are owned by R.M. Dotson  
Address Greenwood, W.Va.  
Drilling commenced May 1, 1925  
Drilling completed August 30, 1925  
Date Shot 9/10/25 From \_\_\_\_\_ To \_\_\_\_\_  
With No record  
Open Flow /10ths Water in No record Inch  
/10ths Merc. in \_\_\_\_\_ Inch  
Volume \_\_\_\_\_ Cu. Ft.  
Rock Pressure \_\_\_\_\_ lbs. \_\_\_\_\_ hrs.  
Oil 30 bbls., 1st 24 hrs.  
Fresh water \_\_\_\_\_ feet \_\_\_\_\_ feet  
Salt water \_\_\_\_\_ feet \_\_\_\_\_ feet

Casing and Tubing	Used in Drilling	Left in Well	Packers
Size			Kind of Packer
16			
13			
10	400		Size of
8 3/4	1060		
6 5/8	2022	2022	Depth set
5 3/16			
3			Perf. top
2		2149	Perf. bottom
Liners Used			Perf. top
			Perf. bottom

CASING CEMENTED \_\_\_\_\_ SIZE \_\_\_\_\_ No. Ft. \_\_\_\_\_ Date \_\_\_\_\_  
COAL WAS ENCOUNTERED AT \_\_\_\_\_ FEET \_\_\_\_\_ INCHES  
\_\_\_\_\_ FEET \_\_\_\_\_ INCHES FEET \_\_\_\_\_ INCHES  
\_\_\_\_\_ FEET \_\_\_\_\_ INCHES FEET \_\_\_\_\_ INCHES

Formation	Color	Hard or Soft	Top	Bottom	Oil, Gas or Water	Depth Found	Remarks
Dunkard	Gray	Hard	1050	1110			
Big Lime	White	Hard	1960	2119			
Injun Sand	White	Soft	2119	2150	Oil	2134-49	
No further record							



DEC 6 1957

Formation	Color	Hard or Soft	Top	Bottom	Oil, Gas or Water	Depth Found	Remarks

Date July 22, 1957

APPROVED Pechter Oil Co, Owner

By W. S. Kinney  
(Title) Super