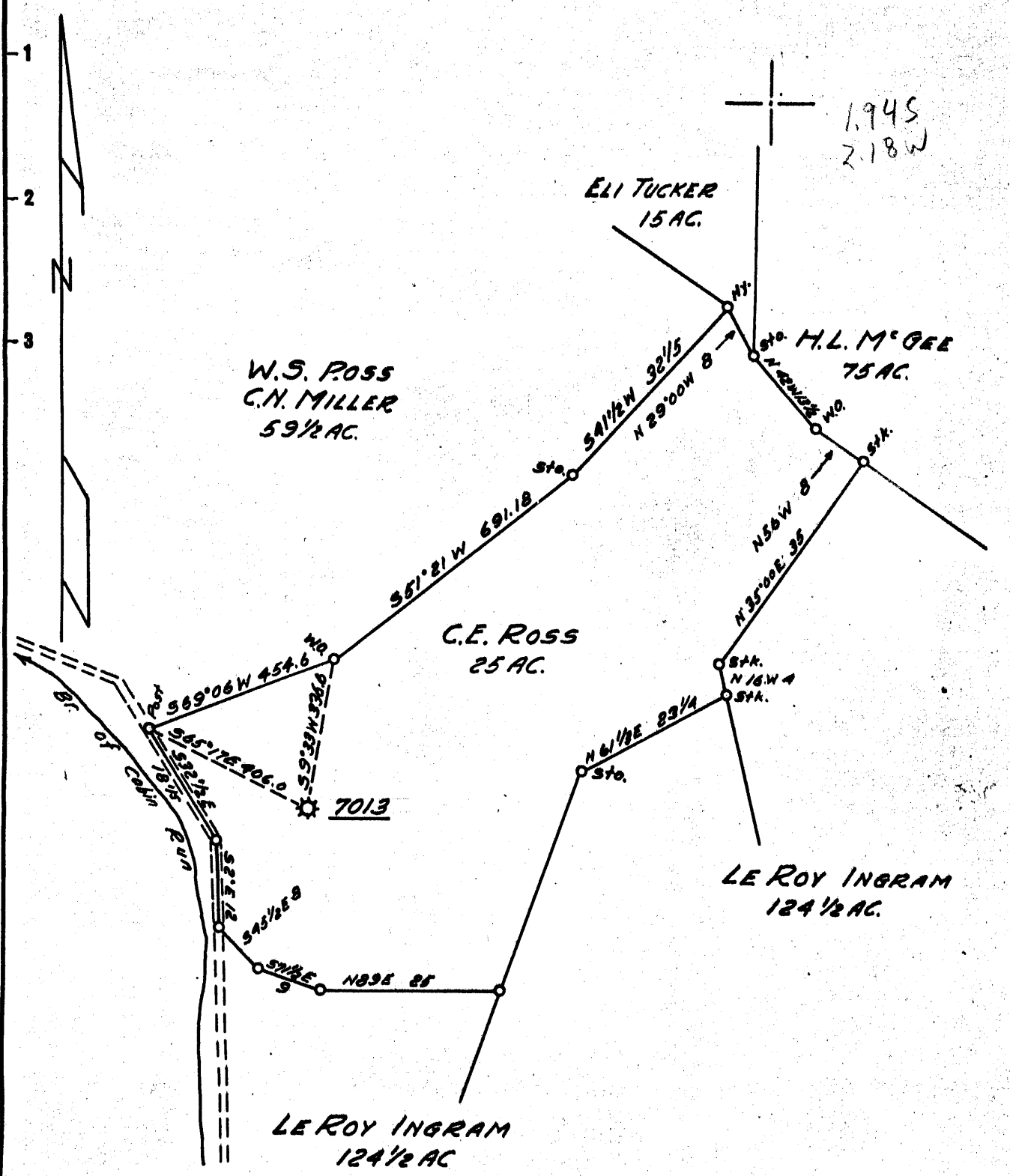


Latitude 39° 15'

Longitude 80° 50'



1945  
2.18W

W.S. ROSS  
C.N. MILLER  
59 1/2 AC.

ELI TUCKER  
15 AC.

H.L. MCGEE  
75 AC.

C.E. ROSS  
25 AC.

LE ROY INGRAM  
124 1/2 AC.

LE ROY INGRAM  
124 1/2 AC.

7013

- New Location..
- Drill Deeper.....
- Abandonment.....

MAP SH. #67 515-W15—F.B.1153 P.5-6

Company HOPE NATURAL GAS CO.  
 Address CLARKSBURG W.VA.  
 Farm C.E. ROSS  
 Tract \_\_\_\_\_ Acres 25 Lease No. 41993  
 Well (Farm) No. \_\_\_\_\_ Serial No. 7013  
 Elevation (Spirit Level) 872.0  
 Quadrangle HOLBROOK  
 County DODDRIDGE District CENTRAL  
 Engineer Guy H. Bradley  
 Engineer's Registration No. 2425  
 File No. \_\_\_\_\_ Drawing No. \_\_\_\_\_  
 Date JUNE 27, 1956 Scale 1"=20P.

STATE OF WEST VIRGINIA  
 DEPARTMENT OF MINES  
 OIL AND GAS DIVISION  
 CHARLESTON

**WELL LOCATION MAP**  
 FILE NO. DOD-1064-A

+ Denotes location of well on United States Topographic Maps, scale 1 to 62,500, latitude and longitude lines being represented by border lines as shown.

— Denotes one inch spaces on border line of original tracing.

73028 on CNG maps JAS.



1012

STATE OF WEST VIRGINIA  
DEPARTMENT OF MINES  
OIL AND GAS DIVISION

Quadrangle Holbrook

Permit No. 1064-A

WELL RECORD

Oil or Gas Well Gas  
(KIND)

Company Hope Natural Gas Company  
 Address Clarksburg, W. Va.  
 Farm C. E. Ross Acres 25  
 Location (waters) \_\_\_\_\_  
 Well No. 7013 Elev. 872'  
 District Central County Doddridge  
 The surface of tract is owned in fee by \_\_\_\_\_  
 Address \_\_\_\_\_  
 Mineral rights are owned by \_\_\_\_\_  
 Address \_\_\_\_\_  
 Drilling commenced 1-3-21  
 Drilling completed 2-14-21  
 Date Shot 6-27-46 From Injun sand  
 With 40 Qts.  
 Open Flow \_\_\_\_\_ /10ths Water in \_\_\_\_\_ Inch  
 \_\_\_\_\_ /10ths Merc. in \_\_\_\_\_ Inch  
 Volume Exhausted Cu. Ft. \_\_\_\_\_  
 Rock Pressure No record lbs. \_\_\_\_\_ hrs. \_\_\_\_\_  
 Oil None bbls., 1st 24 hrs. \_\_\_\_\_  
 Fresh water 1010' feet \_\_\_\_\_ feet  
 Salt water 1380' feet \_\_\_\_\_ feet

Casing and Tubing	Used in Drilling	Left in Well	Packers
Size			
16			Kind of Packer _____
13			
10			Size of _____
8 3/4			
6 3/4	<u>1857'</u>	<u>1857</u>	Depth set _____
5 3/16			
3			Perf. top _____
2	<u>2076'</u>	<u>Pulled</u>	Perf. bottom _____
Liners Used			Perf. top _____
			Perf. bottom _____

CASING CEMENTED \_\_\_\_\_ SIZE \_\_\_\_\_ No. Ft. \_\_\_\_\_ Date \_\_\_\_\_  
No Cementing

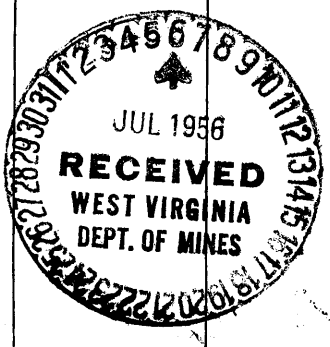
COAL WAS ENCOUNTERED AT 575 FEET 36 INCHES  
\_\_\_\_\_  
FEET INCHES FEET INCHES  
\_\_\_\_\_  
FEET INCHES FEET INCHES

Formation	Color	Hard or Soft	Top	Bottom	Oil, Gas or Water	Depth Found	Remarks
Coal			575	578			
1st. Cow Run			980	1010	Water	1010	
2nd. Cow Run			1085	1184			
First Salt			1360	1666	Water	1380	
MAXON			1740	1765			
BIG LIME			1810	1857			
BIG INUJN			1930	2062	Gas	1955	

Total Depth

2062'

TD 2076 from casing record



July 5, 1956  
*Jack Bailey*  
Hope Natural Gas Company

OCT 26 1956

Well No. **7013** Lease No. \_\_\_\_\_ Name **C. E. Ross** District \_\_\_\_\_  
 District **Central** County **Doddridge** State **W. Va.**

Location Made \_\_\_\_\_ First Work Done **70217**  
 Rig Commenced \_\_\_\_\_ Rig Completed \_\_\_\_\_  
 Drilling Commenced \_\_\_\_\_ Drilling Completed **2-14-21**  
 Rig Contractor \_\_\_\_\_ { Drilling Contractor }  
 Drillers \_\_\_\_\_ { If N. M. G. Co. Tools, String No. }  
 Tool Dressers \_\_\_\_\_

FORMATION	Open or Close Hard or Soft	TOP	BOTTOM	Steel Line Measurements	Water Found Depth	Oil Found Depth	Gas Found Depth	REMARKS
Native Coal								
Pittsburgh Coal		575	578					
Little Dunkard		980	1010		1010			
Big Dunkard		1085	1134					
Gas Sand								
First Salt		1360	1666		1380			
Second Salt								
Third Salt								
Maxon		1740	1765					
Little Lime								
Pencil Cave						1810-17		
Big Lime		1857	1930					
Keener								
Big Injun		1930	1961				1953-61	
Squaw								
Weir								
Berea								
Gantz								
Fifty Foot								
Thirty Foot								
Gordon Stray								
Gordon								
Fourth								
Fifth								
Total Depth			1961					

SIZE	Charged to Well		Put in Well		Pulled Out		Left in Well		Transferred Before Completing		Left at Well Not in Use		Steel Line Measurement		If more than two strings of casing are left in hole, give reasons for leaving additional strings
	Feet	In.	Feet	In.	Feet	In.	Feet	In.	Feet	In.	Feet	In.	Feet	In.	
13" Csg.															
10" "															
8 1/4" "															
6 5/8" "															
5 3/8" "															
Tbg.															
"															

**PACKER RECORD**

SIZE	KIND	Amount Anchor	Amount Above Anchor	REMARKS

**SHOOTING RECORD (If shot before or upon completion of well)**

DATE	Quarts	Top of Shell	Bottom of Shell	Diameter	Sand	TEST BEFORE SHOT			TEST AFTER SHOT			Test Taken After Shot No. Hours	By Whom Shot
						Reading	Liquid	Opening	Reading	Liquid	Opening		

**CEMENTING RECORD**

Date Cemented \_\_\_\_\_ Size Hole Cemented \_\_\_\_\_ Size Casing Cemented \_\_\_\_\_  
 Top Pittsburgh Coal \_\_\_\_\_ Top Cementing \_\_\_\_\_ Amount Cement Used \_\_\_\_\_  
 Bottom Pittsburgh Coal \_\_\_\_\_ Bottom Cementing \_\_\_\_\_ Amount Sand Used \_\_\_\_\_  
 Mr. \_\_\_\_\_ of \_\_\_\_\_ Coal Company on ground when coal was cemented  
 Remarks: \_\_\_\_\_ Signature of persons who cemented well

Approved \_\_\_\_\_

Foreman

Central District, Doddridge County, W. Va.

Hope Natural Gas Co.

On 25 acres.

Drilling completed Feb. 14, 1921.

Gas sample.....by Swing.

	Top.	Bottom.
Pittsburgh Coal	575	- 578
Little Dunkard Sand (water, 1010')	980	- 1010
Big Dunkard Sand	1085	- 1134
First Salt Sand	1360	- 1666
Maxton Sand	1740	- 1765
Oil, 1810-17'		
Big Lime	1857	- 1930
Big Injun Sand (gas, 1953-61')	1930	- 1961
Total depth		1961