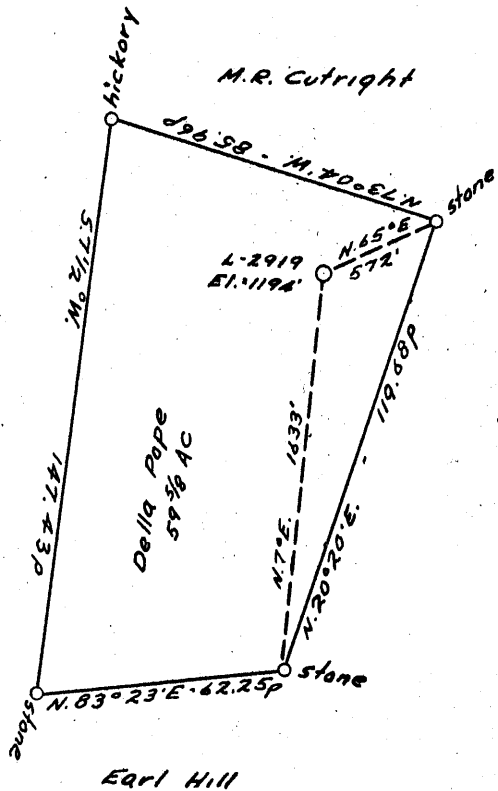


LONGITUDE 80° 30'



John Dyer Jr.

Earl Hill

Earl Hill

+ 4.06 S
1.02 W

Longitude ?

Cannot locate!

COAL OWNED BY _____

NEW LOCATION...
 DRILL DEEPER...
 ABANDONMENT...

COMPANY The Manufacturers Light & Heat Co.
 ADDRESS 800 Union Trust Bldg. Pgh. Pa.
 FARM Della Pope
 TRACT _____ ACRES 80 LEASE No. 7340
 WELL (FARM) No. 1 SERIAL No. 2919
 ELEVATION (SPIRIT LEVEL) 1194
 QUADRANGLE Centerpoint
 COUNTY Doddridge DISTRICT McCellan
 ENGINEER Thomas E. Virgin - S.M.
 ENGINEER'S REGISTRATION No. 1503
 TITLE No. _____ DRAWING No. V-15-150
 DATE 12 January 1954 SCALE 1" = 800'

STATE OF WEST VIRGINIA
 DEPARTMENT OF MINES
 OIL AND GAS DIVISION
 CHARLESTON

WELL LOCATION MAP

FILE No. DOD-1045-A

+ DENOTES LOCATION OF WELL ON UNITED STATES TOPOGRAPHIC MAPS, SCALE 1 TO 62,500. LATITUDE AND LONGITUDE LINES BEING REPRESENTED BY BORDER LINES AS SHOWN.

- DENOTES ONE INCH SPACES ON BORDER LINE OF ORIGINAL TRACING.

39° 22' 00"

Latitude

31045.

Longitude

Topo Location

7.5' Loc. 1.05 W 15' Loc. 1.05 W
1.36 S (calc.) 4.24 S

Company _____

Farm _____

15' Quad Centerpoint
(sec.)

7.5' Quad Salem

District McClellan

WELL LOCATION PLAT

County 017 Permit 31045



STATE OF WEST VIRGINIA
DEPARTMENT OF MINES
OIL AND GAS DIVISION

994

WELL RECORD

Permit No. 1045A

Oil or Gas Well _____
(KIND)

Company THE MANUFACTURERS LIGHT AND HEAT COMPANY
Address 800 Union Trust Bldg., Pgh., Penna.
Farm A. H. Pope Acres 60
Location (waters) _____
Well No. 2919 Elev. 1194'
District McClellan County Doddridge
The surface of tract is owned in fee by _____
Address _____
Mineral rights are owned by _____
Address _____

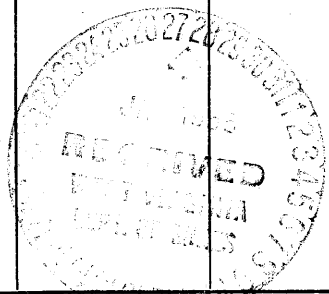
Casing and Tubing	Used in Drilling	Left in Well	Packers
Size			
16			Kind of Packer
13			
10	321	321	Size of
8 1/4	1346'6"	1346'6"	
6 5/8	2122'1"	2122'1"	Depth set
5 3/16			
3			Perf. top
2			Perf. bottom
Liners Used			Perf. top
			Perf. bottom

Drilling commenced February 5, 1924
Drilling completed April 26, 1924
Date Shot 5-6-24 From 2901 To 2917
With 15 gts
Open Flow 2/10ths Water in _____ Inch
_____ /10ths Merc. in _____ Inch
Volume 47 mcf _____ Cu. Ft.
Rock Pressure 42 lbs. _____ hrs.
Oil _____ bbls., 1st 24 hrs.
Fresh water _____ feet _____ feet
Salt water _____ feet _____ feet

CASING CEMENTED _____ SIZE _____ No. Ft. _____ Date _____
COAL WAS ENCOUNTERED AT 786 FEET _____ INCHES
_____ FEET _____ INCHES FEET _____ INCHES
_____ FEET _____ INCHES FEET _____ INCHES

Formation	Color	Hard or Soft	Top	Bottom	Oil, Gas or Water	Depth Found	Remarks
Pittsburgh Coal			786	793			
Line			970	1025			
Big Dunkard			1333	1368			
1st Salt Sand			1675	1705			
2nd Salt Sand			1715	1765			
3rd Salt Sand			1825	1860			
Line			1860	1885			
Naxon Sand			1950	2000			
Little Line			2010	2050			
Pencil Cave			2055	2070			
Big Lime			2070	2150			
Big Injun Sand			2150	2265	Gas at 2180 - 2185		
Squaw Sand			2270	2325			
Gantz Sand			2400	2520			
Thirty Foot Sand			2700	2720			
Lime Shells			2750	2800			
Stray			2840	2855	Hole reduced 2845		
Shells			2875	2910	small show gas at 2850		
Gordon			2910	2929	Gas at 2912		
Slate			2929	3012			
Total Depth			3012				

Well shot with 15 qts. well shot at 2900 1/2 to 2916 1/2 with 15 qts. When well was drilled in it made 20/10 water in 1" opening. 47 mcf After shot made 25/10 in 1" opening (water) 53 mcf



JUN 17 1925

Formation	Color	Hard or Soft	Top	Bottom	Oil, Gas or Water	Depth Found	Remarks

Date JANUARY 26, 195

APPROVED ~~THE MANUFACTURERS LIGHT AND HEAT CO.~~ Owner

By *Paul Cooper*
LARD AGENT (Title)