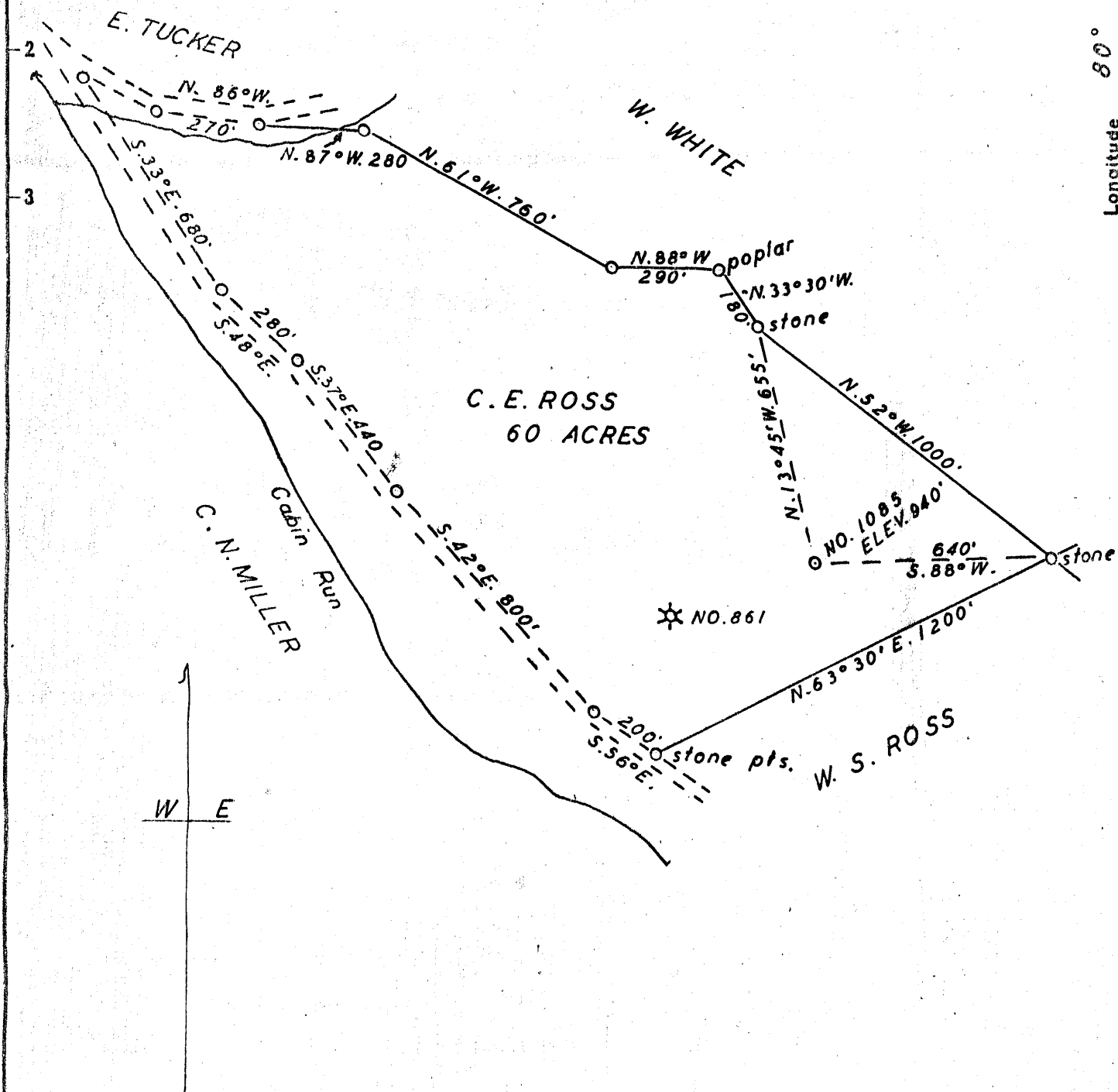


Latitude 39° 15'

Longitude 80° 50'

+ 1,395  
2,12W



New Location..   
 Drill Deeper.....   
 Abandonment.....

Company	MACKAY & WHITE
Address	RAVEN ROCK W. VA.
Farm	C. E. ROSS
Tract	Acres 60 Lease No.
Well (Farm) No.	1085 Serial No.
Elevation (Spirit Level)	940'
Quadrangle	HOLBROOK
County	DODDRIDGE District CENTRAL
Engineer	George R. Clarke
Engineer's Registration No.	Surveyed By Homer W. Myers 102
File No.	Drawing No.
Date	SEPT. 27, 1954 Scale 1" = 400'

STATE OF WEST VIRGINIA  
 DEPARTMENT OF MINES  
 OIL AND GAS DIVISION  
 CHARLESTON

**WELL LOCATION MAP**  
 FILE NO. DOD-1043-A

+ Denotes location of well on United States Topographic Maps, scale 1 to 62,500, latitude and longitude lines being represented by border lines as shown.

- Denotes one inch spaces on border line of original tracing.



STATE OF WEST VIRGINIA  
DEPARTMENT OF MINES  
OIL AND GAS DIVISION

WELL RECORD

Permit No. 1043-A

Oil or Gas Well \_\_\_\_\_ (KIND)

Company Mackey & White  
Address Raven Rock, W.Va.  
Farm C.E. Ross Acres 60  
Location (waters) Cabin Run  
Well No. 1085 Elev. 940  
District Central County Doddridge  
The surface of tract is owned in fee by C.E. Ross  
Greenwood, W.Va. Address \_\_\_\_\_  
Mineral rights are owned by same  
Address same  
Drilling commenced Feb. 1922  
Drilling completed Mar. 1922  
Date Shot \_\_\_\_\_ From \_\_\_\_\_ To \_\_\_\_\_  
With \_\_\_\_\_

Casing and Tubing	Used in Drilling	Left in Well	Packers
Size			
16			Kind of Packer
13			
10			Size of
8 1/4	1,068	1,068	
6 5/8	1,853		Depth set
5 3/16	1,902	On packer	
3			Perf. top
2		2,052	Perf. bottom
Liners Used			Perf. top
			Perf. bottom

Open Flow \_\_\_\_\_ /10ths Water in \_\_\_\_\_ Inch  
\_\_\_\_\_ /10ths Merc. in \_\_\_\_\_ Inch  
Volume \_\_\_\_\_ Cu. Ft.  
Rock Pressure \_\_\_\_\_ lbs. \_\_\_\_\_ hrs.  
Oil \_\_\_\_\_ bbls., 1st 24 hrs.  
Fresh water \_\_\_\_\_ feet \_\_\_\_\_ feet  
Salt water \_\_\_\_\_ feet \_\_\_\_\_ feet

CASING CEMENTED \_\_\_\_\_ SIZE \_\_\_\_\_ No. Ft. \_\_\_\_\_ Date \_\_\_\_\_  
COAL WAS ENCOUNTERED AT \_\_\_\_\_ FEET \_\_\_\_\_ INCHES  
\_\_\_\_\_ FEET \_\_\_\_\_ INCHES FEET \_\_\_\_\_ INCHES  
\_\_\_\_\_ FEET \_\_\_\_\_ INCHES FEET \_\_\_\_\_ INCHES

Formation	Color	Hard or Soft	Top	Bottom	Oil, Gas or Water	Depth Found	Remarks
1st. Salt Sand			1310	1335			
2nd. " "			1421	1530			
Maxon Sand			1850	1875			
Big Lime			1897	1999			
Big Injun			1999	2033			
		Bottom hole	2042				



NOV 12 1964

(Over)

Formation	Color	Hard or Soft	Top	Bottom	Oil, Gas or Water	Depth Found	Remarks

Date Oct 4, 1954

APPROVED Edwin White, Owner

By Robert  
(Title)

