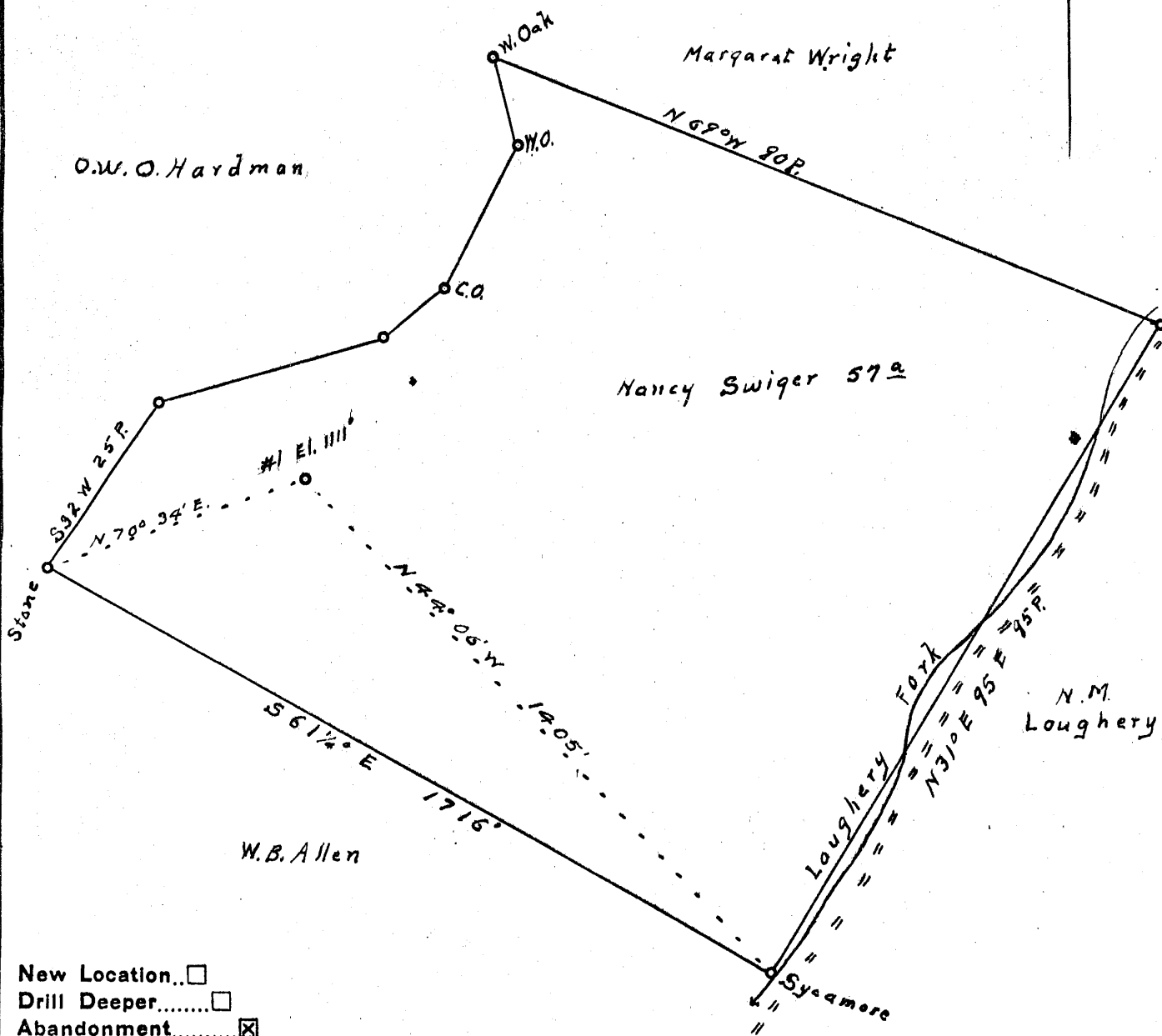


+Latitude 39° 25'

0.145  
2.40 W

Longitude 80° 40'



New Location..   
 Drill Deeper.....   
 Abandonment.....

Company Pierson Smith, Feick and Kirkbride

Address R2, Walker, W.Va.

Farm Nancy Swiger

Tract \_\_\_\_\_ Acres 57 Lease No. \_\_\_\_\_

Well (Farm) No. 1 Serial No. \_\_\_\_\_

Elevation (Spirit Level) 1111'

Quadrangle Centerpoint

County Doddridge District McClellan

Engineer Robert R. Anderson

*by A. Meredith*

Engineer's Registration No. 296

File No. \_\_\_\_\_ Drawing No. \_\_\_\_\_

Date Aug 31, 54 Scale 1 in = 20 Poles

STATE OF WEST VIRGINIA  
 DEPARTMENT OF MINES  
 OIL AND GAS DIVISION  
 CHARLESTON

### WELL LOCATION MAP

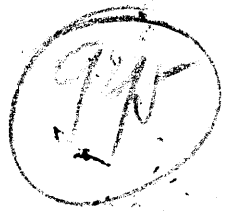
FILE NO. DOD-1040-A

+ Denotes location of well on United States Topographic Maps, scale 1 to 62,500, latitude and longitude lines being represented by border lines as shown.

- Denotes one inch spaces on border line of original tracing.



STATE OF WEST VIRGINIA  
DEPARTMENT OF MINES  
OIL AND GAS DIVISION



WELL RECORD

Permit No. 1040-A

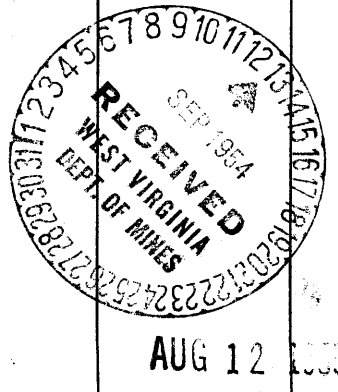
Oil or Gas Well \_\_\_\_\_ (KIND)

Company Fierson, Smith, Feick & Kirkbridge  
 Address Walker, Rt. 2, W. Va.  
 Farm Pancy Swager Acres 57  
 Location (waters) Smith, Ch. Loughery Fork  
 Well No. 1 Elev. 1111  
 District McClellan County Woodridge  
 The surface of tract is owned in fee by Claud, Smith  
near Little W. Va.  
 Mineral rights are owned by same  
 Address \_\_\_\_\_  
 Drilling commenced 1899  
 Drilling completed \_\_\_\_\_  
 Date Shot \_\_\_\_\_ From \_\_\_\_\_ To \_\_\_\_\_  
 With \_\_\_\_\_  
 Open Flow \_\_\_\_\_ /10ths Water in \_\_\_\_\_ Inch  
 \_\_\_\_\_ /10ths Merc. in \_\_\_\_\_ Inch  
 Volume \_\_\_\_\_ Cu. Ft.  
 Rock Pressure \_\_\_\_\_ lbs. \_\_\_\_\_ hrs.  
 Oil \_\_\_\_\_ bbls., 1st 24 hrs.  
 Fresh water \_\_\_\_\_ feet \_\_\_\_\_ feet  
 Salt water \_\_\_\_\_ feet \_\_\_\_\_ feet

Casing and Tubing	Used in Drilling	Left in Well	Packers
Size			Kind of Packer
16			
13			
10	300'	none	Size of
8 3/4	1365'	none	
6 1/2	2207	2207	Depth set
5 3/16	320'	320'	
3			Perf. top
2			Perf. bottom
Liners Used			Perf. top
			Perf. bottom

CASING CEMENTED \_\_\_\_\_ SIZE \_\_\_\_\_ No. Ft. \_\_\_\_\_ Date \_\_\_\_\_  
 COAL WAS ENCOUNTERED AT \_\_\_\_\_ FEET \_\_\_\_\_ INCHES  
 \_\_\_\_\_ FEET \_\_\_\_\_ INCHES FEET \_\_\_\_\_ INCHES  
 \_\_\_\_\_ FEET \_\_\_\_\_ INCHES FEET \_\_\_\_\_ INCHES

Formation	Color	Hard or Soft	Top	Bottom	Oil, Gas or Water	Depth Found	Remarks
clay shale		rock	000	800'			
cave			800'	950'			
slate & shale			950'	1400'			
salt sand			1400'	1425'			
shale			1425'	2210'			
oil sand			2210'	2225'			
	total depth		2225'				



Formation	Color	Hard or Soft	Top	Bottom	Oil, Gas or Water	Depth Found	Remarks

Date 9 12 1954

APPROVED Piersol Smith Fiech & Kirkbride, Owner

By C. R. Piersol  
(Title)