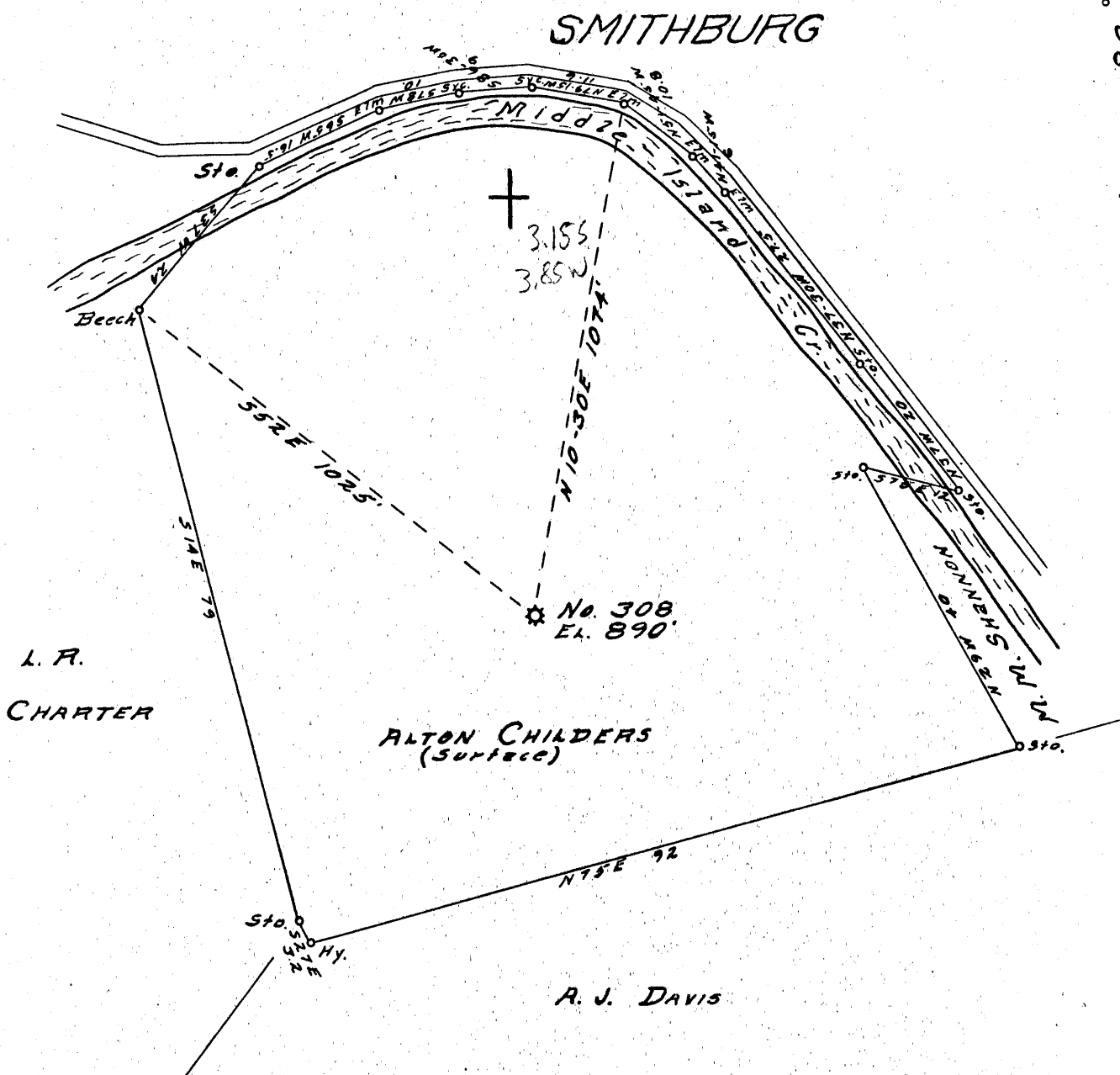


Latitude 39° 20'

Longitude 80° 40'



New Location...   
 Drill Deeper.....   
 Abandonment.....

7.5 loc      Calc 15 loc  
 0.26S 391700      3135  
 1.65W 804230      3.85W

Company CARNEGIE NATURAL GAS  
 Address PITTSBURGH, PA.  
 Farm JONES-FLAIR-DAVIS  
 Tract \_\_\_\_\_ Acres 18 Lease No. E4623  
 Well (Farm) No. 1 Serial No. E 308  
 Elevation (Spirit Level) 890'  
 Quadrangle CENTERPOINT SW.  
 County DODDRIDGE District WEST UNION  
 Engineer John B. Cook  
 Engineer's Registration No. 1850  
 File No. \_\_\_\_\_ Drawing No. \_\_\_\_\_  
 Date 10-21-53 Scale 1"=20 Feet

STATE OF WEST VIRGINIA  
 DEPARTMENT OF MINES  
 OIL AND GAS DIVISION  
 CHARLESTON

**WELL LOCATION MAP**  
 FILE NO. DOD-1017-A

Was 017 92927  
 + Denotes location of well on United States Topographic Maps, scale 1 to 62,500, latitude and longitude lines being represented by border lines as shown.  
 - Denotes one inch spaces on border line of original tracing.



STATE OF WEST VIRGINIA  
DEPARTMENT OF MINES  
OIL AND GAS DIVISION

(971)

Permit No. 1017-A

**WELL RECORD**  
GAS WELL TO BE ABANDONED

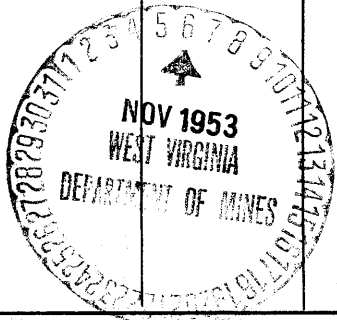
~~Oil~~ or Gas Well GAS (KIND)

Company Carnegie Natural Gas Company,  
Address 1015 Frick Building, Pittsburgh 19, Pa.  
Farm Jones - Blair - Davis Acres 48  
Location (waters) Middle Island Creek  
Well No. 308 Elev. 890  
District West Union County Doddridge  
The surface of tract is owned in fee by Alton Childers,  
Smithburg, Address West Virginia  
Mineral rights are owned by See Below  
Address \_\_\_\_\_  
Drilling commenced 5-30-06  
Drilling completed 7-3-06  
Date Shot \_\_\_\_\_ From \_\_\_\_\_ To \_\_\_\_\_  
With \_\_\_\_\_  
Open Flow \_\_\_\_\_ /10ths Water in \_\_\_\_\_ Inch  
\_\_\_\_\_ /10ths Merc. in \_\_\_\_\_ Inch  
Volume \_\_\_\_\_ Cu. Ft.  
Rock Pressure \_\_\_\_\_ lbs. \_\_\_\_\_ hrs.  
Oil \_\_\_\_\_ bbls., 1st 24 hrs.  
Fresh water \_\_\_\_\_ feet \_\_\_\_\_ feet  
Salt water \_\_\_\_\_ feet \_\_\_\_\_ feet

Casing and Tubing	Used in Drilling	Left in Well	Packers
Size			Kind of Packer
16			
13			
10			Size of
8 1/4	860	860	
6 5/8	1585	1585	Depth set
5 3/16			
3	2369	None	Perf. top
2			Perf. bottom
Liners Used			Perf. top
			Perf. bottom

CASING CEMENTED \_\_\_\_\_ SIZE \_\_\_\_\_ No. Ft. \_\_\_\_\_ Date \_\_\_\_\_  
COAL WAS ENCOUNTERED AT \_\_\_\_\_ FEET \_\_\_\_\_ INCHES  
\_\_\_\_\_ FEET \_\_\_\_\_ INCHES \_\_\_\_\_ FEET \_\_\_\_\_ INCHES  
\_\_\_\_\_ FEET \_\_\_\_\_ INCHES \_\_\_\_\_ FEET \_\_\_\_\_ INCHES

Formation	Color	Hard or Soft	Top	Bottom	Oil, Gas or Water	Depth Found	Remarks
Big Injun Sand			1650	1760			
Gantz Sand			1930	2030			
Gordon Stray Sand			2340	2350	Gas	2342	
Gordon Sand			2367	2376	Gas	2369	
		Total Depth		2389			
<p>Mineral Rights owned by:</p> <p>Alton Childers, Smithburg, W. Va.</p> <p>Edwin C. Jones and Edwin C. Jones, Attorney-in-fact for the Heirs of Georgia S. Jones, 1/2 West Virginia University, Morgantown, W. Va.</p>							



Formation	Color	Hard or Soft	Top	Bottom	Oil, Gas or Water	Depth Found	Remarks
							96

Date November 5, 1953

APPROVED CARNEGIE NATURAL GAS COMPANY, Owner

By B. N. Archer  
(Title) Land Agent