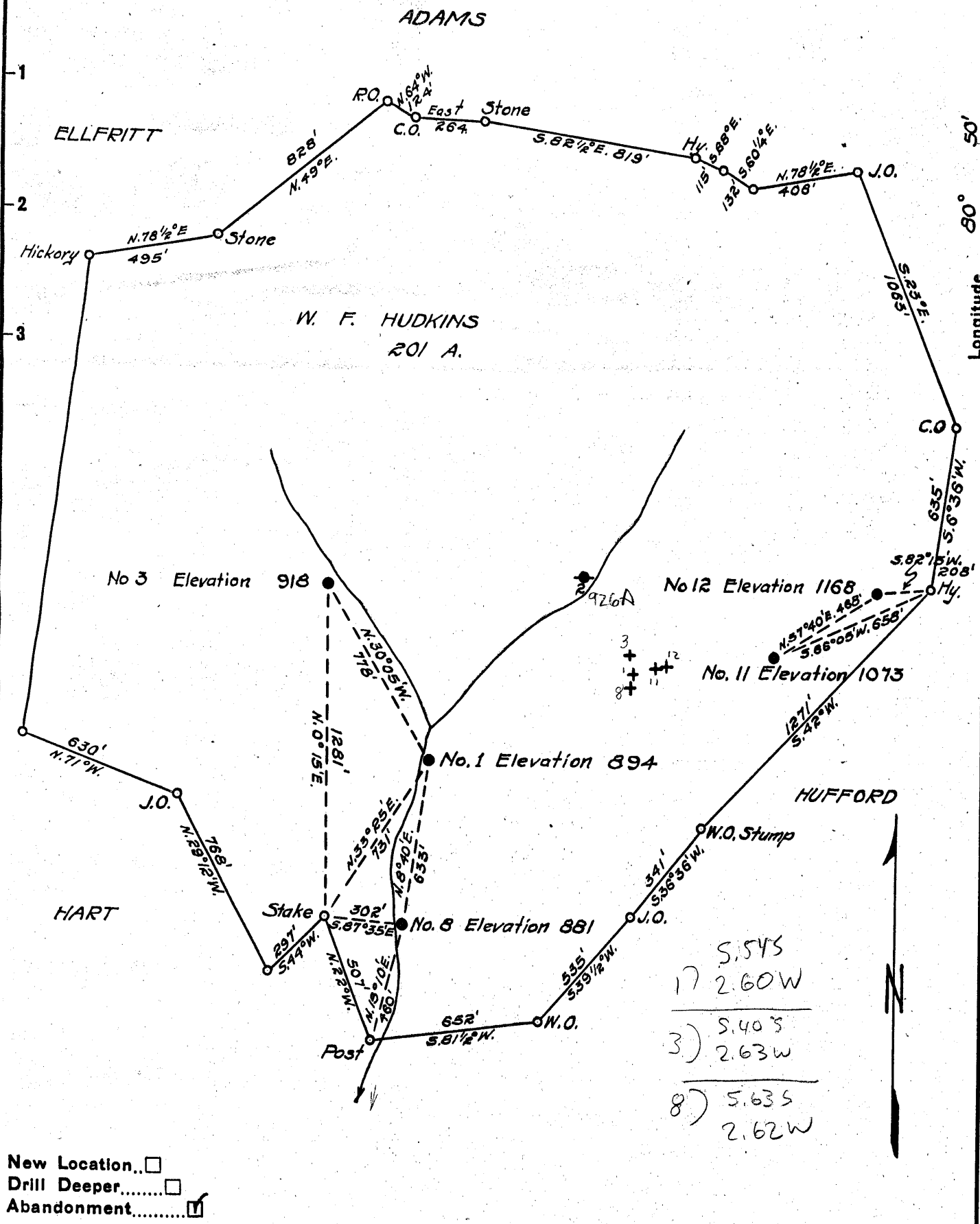


Latitude 39° 20'

Longitude 80° 50'



New Location...   
 Drill Deeper.....   
 Abandonment.....

Company MACKAY & WHITE  
 Address RAVEN ROCK, W. VA.  
 Farm W. F. HUDKINS  
 Tract \_\_\_\_\_ Acres 201 Lease No. \_\_\_\_\_  
 Well (Farm) No. 1, 3, 8, 11, 12 Serial No. \_\_\_\_\_  
 Elevation (Spirit Level) 894, 918, 881, 1073, 1168  
 Quadrangle WEST UNION  
 County DODDRIDGE District CENTRAL  
 Engineer B. F. RINEHART  
 Engineer's Registration No. 648  
 File No. \_\_\_\_\_ Drawing No. 978-CD  
 Date Sept. 23, 1953 Scale 1 in. = 500 ft.

STATE OF WEST VIRGINIA  
 DEPARTMENT OF MINES  
 OIL AND GAS DIVISION  
 CHARLESTON

**WELL LOCATION MAP**  
 FILE NO. DOD-1013-A-#1  
DOD-1014-A-#3  
DOD-1015-A-#8

+ Denotes location of well on United States Topographic Maps, scale 1 to 62,500, latitude and longitude lines being represented by border lines as shown.  
 - Denotes one inch spaces on border line of original tracing.



STATE OF WEST VIRGINIA  
DEPARTMENT OF MINES  
OIL AND GAS DIVISION

967

*West Union*  
1014-A

WELL RECORD

Permit No. 1014-A

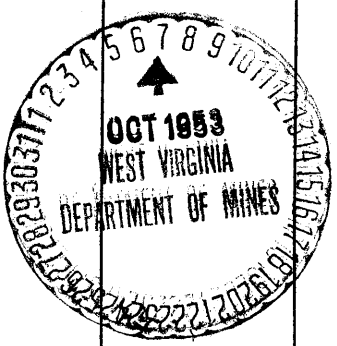
Oil or Gas Well X (KIND)

Company Mackey & White  
 Address Raven Rock, W.Va.  
 Farm W.F. Hudkins Acres 201  
 Location (waters) Leason Run  
 Well No. 3 Elev. 918  
 District Central County Doddridge  
 The surface of tract is owned in fee by W.F. Hudkins  
Greenwood Address W.Va.  
 Mineral rights are owned by same  
 Address \_\_\_\_\_  
 Drilling commenced \_\_\_\_\_  
 Drilling completed 1920  
 Date Shot \_\_\_\_\_ From \_\_\_\_\_ To \_\_\_\_\_  
 With \_\_\_\_\_  
 Open Flow \_\_\_\_\_ /10ths Water in \_\_\_\_\_ Inch  
 \_\_\_\_\_ /10ths Merc. in \_\_\_\_\_ Inch  
 Volume Not Now producing Cu. Ft.  
 Rock Pressure \_\_\_\_\_ lbs. \_\_\_\_\_ hrs.  
 Oil \_\_\_\_\_ bbls., 1st 24 hrs.  
 Fresh water \_\_\_\_\_ feet \_\_\_\_\_ feet  
 Salt water \_\_\_\_\_ feet \_\_\_\_\_ feet

Casing and Tubing	Used in Drilling	Left in Well	Packers
Size			
16			Kind of Packer
13			
10 <u>332</u>		<u>none</u>	Size of
8 1/4 <u>1060</u>		"	
6 5/8 <u>1887</u>	<u>1125</u>	<u>1887</u>	Depth set
5 3/16			
3			Perf. top
2	<u>L</u>	<u>1998</u>	Perf. bottom
Liners Used			Perf. top
			Perf. bottom

CASING CEMENTED \_\_\_\_\_ SIZE \_\_\_\_\_ No. Ft. \_\_\_\_\_ Date \_\_\_\_\_  
 COAL WAS ENCOUNTERED AT \_\_\_\_\_ FEET \_\_\_\_\_ INCHES  
 \_\_\_\_\_ FEET \_\_\_\_\_ INCHES FEET \_\_\_\_\_ INCHES  
 \_\_\_\_\_ FEET \_\_\_\_\_ INCHES FEET \_\_\_\_\_ INCHES

Formation	Color	Hard or Soft	Top	Bottom	Oil, Gas or Water	Depth Found	Remarks
Salt Sand		1586 to 1683		1580 to 1675			
Maxon Sand		1800 to 1835					
Big lime		1874 to 1948					
Oil Pay		1955 to 1985					
Bottom hole		1998					



Formation	Color	Hard or Soft	Top	Bottom	Oil, Gas or Water	Depth Found	Remarks
							9

Date Oct 31, 1953

APPROVED Mahey of White, Owner

By Low White Partner  
(Title)