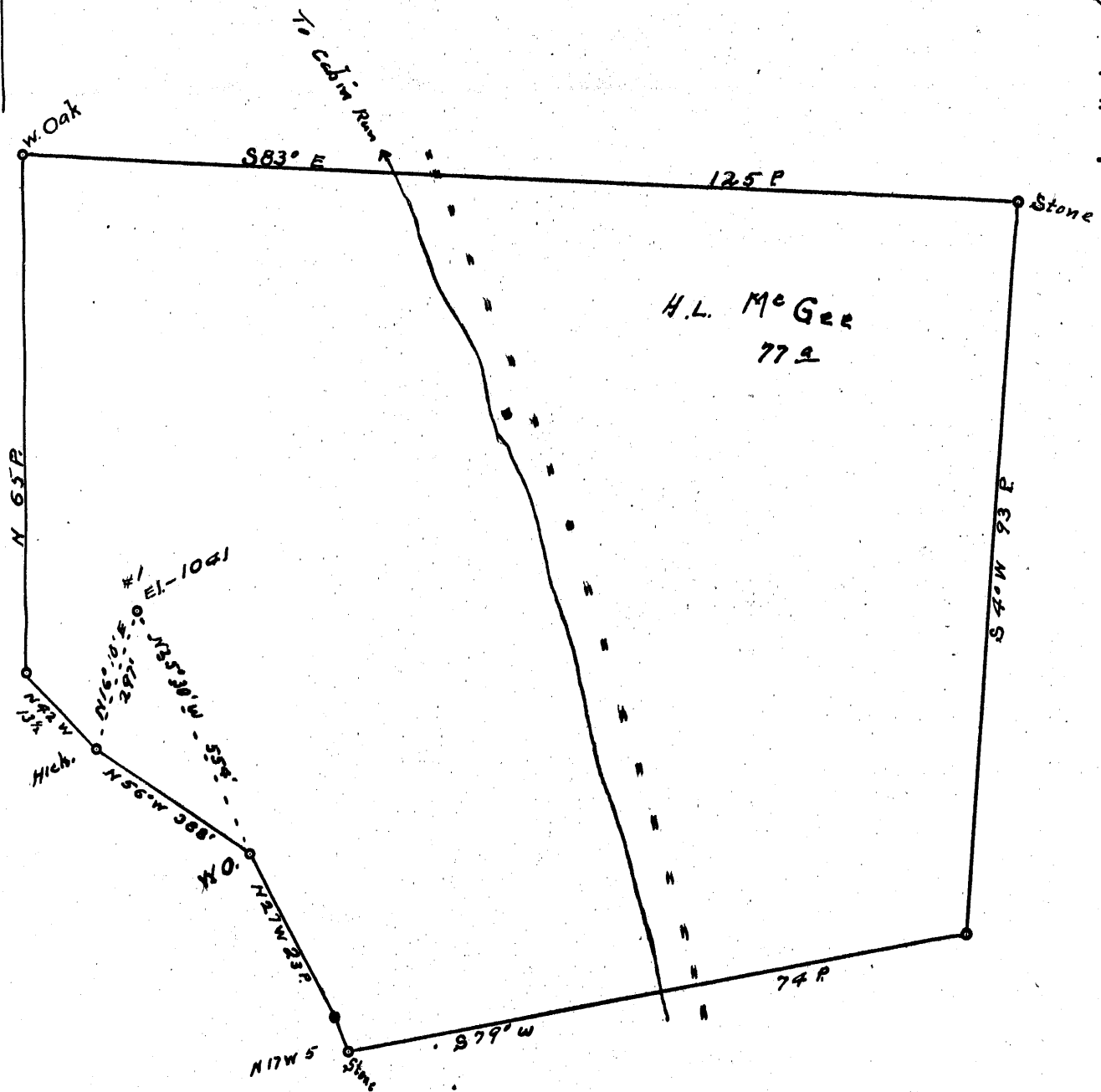


Latitude  $39^{\circ} 15'$

Longitude  $80^{\circ} 50'$

+ 1.37 S  
1.86 W



New Location..   
 Drill Deeper.....   
 Abandonment.....

Company Odin Hardin  
 Address R1 Williamsstown  
 Farm H.L. McGee  
 Tract \_\_\_\_\_ Acres 27 Lease No. \_\_\_\_\_  
 Well (Farm) No. 1 Serial No. \_\_\_\_\_  
 Elevation (Spirit Level) 1041  
 Quadrangle Halbreak  
 County Doddridge District Central  
 Engineer Robert R. Anderson  
 Engineer's Registration No. 296  
 File No. \_\_\_\_\_ Drawing No. \_\_\_\_\_  
 Date Aug 1st 53 Scale 1/111 = 20 Poles

STATE OF WEST VIRGINIA  
 DEPARTMENT OF MINES  
 OIL AND GAS DIVISION  
 CHARLESTON

**WELL LOCATION MAP**  
 FILE NO. DOD-1009-A

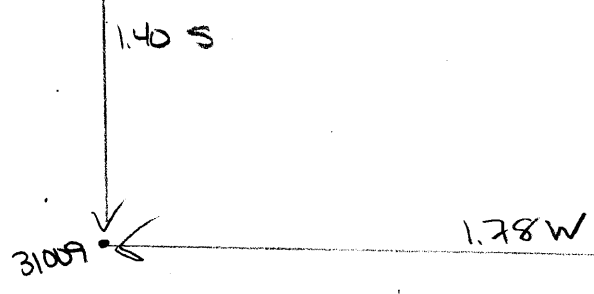
+ Denotes location of well on United States Topographic Maps, scale 1 to 62,500, latitude and longitude lines being represented by border lines as shown.  
 - Denotes one inch spaces on border line of original tracing.

LATITUDE

39° 15'

80° 50'

LONGITUDE



7'5 OGIS topo location

7.5' loc 1.40 S 15' loc \_\_\_\_\_  
                   1.78 W (calc.) \_\_\_\_\_

Company \_\_\_\_\_

Farm H L McGee 1

Quad Oxford

County Doddridge

District \_\_\_\_\_

WELL LOCATION MAP

File No. Dodd 1009A  
(17) 31009



956

STATE OF WEST VIRGINIA  
DEPARTMENT OF MINES  
OIL AND GAS DIVISION

WELL RECORD

Permit No. 1009-A

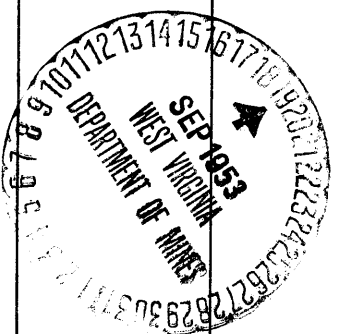
Oil or Gas Well

Company Otis Kardin  
 Address Williamstown, rt, 1, W. VA  
 Farm H.L. McGee Acres 77  
 Location (waters) Cabin run  
 Well No. 1. Elev. 1041  
 District Central County Woodridge  
 The surface of tract is owned in fee by H.L. McGee Mrs,  
Glenville Address W. VA  
 Mineral rights are owned by same  
 Address \_\_\_\_\_  
 Drilling commenced about 1915  
 Drilling completed \_\_\_\_\_  
 Date Shot \_\_\_\_\_ From \_\_\_\_\_ To \_\_\_\_\_  
 With \_\_\_\_\_  
 Open Flow \_\_\_\_\_ /10ths Water in \_\_\_\_\_ Inch  
 \_\_\_\_\_ /10ths Merc. in \_\_\_\_\_ Inch  
 Volume \_\_\_\_\_ Cu. Ft.  
 Rock Pressure \_\_\_\_\_ lbs. \_\_\_\_\_ hrs.  
 Oil \_\_\_\_\_ bbls., 1st 24 hrs.  
 Fresh water \_\_\_\_\_ feet \_\_\_\_\_ feet  
 Salt water \_\_\_\_\_ feet \_\_\_\_\_ feet

Casing and Tubing	Used in Drilling	Left in Well	Packers
Size			
16			Kind of Packer
13			
10	365'	none	Size of
8 1/4	1266'	none	
6 3/4	1952'	1952'	Depth set
5 3/16			
3			Perf. top
2			Perf. bottom
Liners Used			Perf. top
			Perf. bottom

CASING CEMENTED \_\_\_\_\_ SIZE \_\_\_\_\_ No. Ft. \_\_\_\_\_ Date \_\_\_\_\_  
 COAL WAS ENCOUNTERED AT \_\_\_\_\_ FEET \_\_\_\_\_ INCHES  
 \_\_\_\_\_ FEET \_\_\_\_\_ INCHES FEET \_\_\_\_\_ INCHES  
 \_\_\_\_\_ FEET \_\_\_\_\_ INCHES FEET \_\_\_\_\_ INCHES

Formation	Color	Hard or Soft	Top	Bottom	Oil, Gas or Water	Depth Found	Remarks
clay & red rock			000	850'			
cave			850'	975'			
shale & slate			975'	1258'			
Dunkard sand			1258'	1309'			
slate & shale			1309'	1600'			
salt sand			1600'	1650'			
slate			1650'	1958'			
maxon sand			1958'	1976'			
total depth 1976							



JAN 2 1954  
(Over) JAN 2 RECD