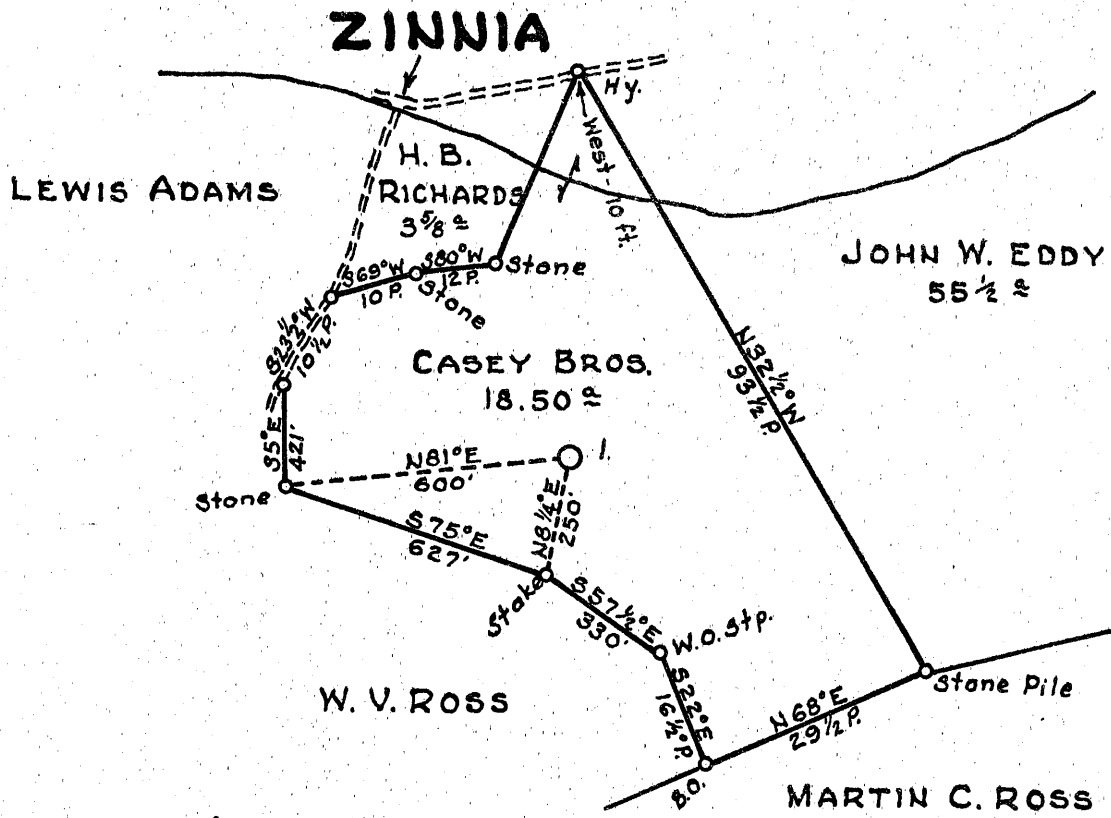


Latitude 39° 15'

Longitude 80° 35'



1.60 S  
1.07 W



- New Location..
- Drill Deeper.....
- Abandonment.....

Company	HAL PACK & CO.
Address	HAMLIN, W. VA.
Farm	CASEY BROS.
Tract	Acres 18 1/2 ac Lease No.
Well (Farm) No.	1 Serial No.
Elevation (Spirit Level)	1057.7
Quadrangle	VADIS
County	DODDRIDGE District GREENBRIER
Engineer	PAUL E. JOACHIM
Engineer's Registration No.	669
File No.	Drawing No.
Date	NOVEMBER 24, 1953 Scale 1" = 400'

STATE OF WEST VIRGINIA  
 DEPARTMENT OF MINES  
 OIL AND GAS DIVISION  
 CHARLESTON

**WELL LOCATION MAP**  
 FILE NO. DOD-1008-A

+ Denotes location of well on United States Topographic Maps, scale 1 to 62,500, latitude and longitude lines being represented by border lines as shown.

- Denotes one inch spaces on border line of original tracing.



STATE OF WEST VIRGINIA  
DEPARTMENT OF MINES  
OIL AND GAS DIVISION

952

Quadrangle \_\_\_\_\_  
Permit No. 1008-A

WELL RECORD

Oil or Gas Well \_\_\_\_\_  
(KIND)

Company HAL H. PACK  
Address HAMLIN, WEST VIRGINIA  
Farm CASEY BROTHERS Acres 18.5  
Location (waters) \_\_\_\_\_  
Well No. 1 Elev. 10577  
District GREENBRIER County DODDRIDGE  
The surface of tract is owned in fee by \_\_\_\_\_  
Address \_\_\_\_\_  
Mineral rights are owned by \_\_\_\_\_  
Address \_\_\_\_\_  
Drilling commenced UNKNOWN  
Drilling completed "  
Date Shot \_\_\_\_\_ From \_\_\_\_\_ To \_\_\_\_\_  
With \_\_\_\_\_  
Open Flow \_\_\_\_\_ /10ths Water in \_\_\_\_\_ Inch  
\_\_\_\_\_ /10ths Merc. in \_\_\_\_\_ Inch  
Volume \_\_\_\_\_ Cu. Ft.  
Rock Pressure \_\_\_\_\_ lbs. \_\_\_\_\_ hrs.  
Oil \_\_\_\_\_ bbls., 1st 24 hrs.  
Fresh water \_\_\_\_\_ feet \_\_\_\_\_ feet  
Salt water \_\_\_\_\_ feet \_\_\_\_\_ feet

Casing and Tubing	Used in Drilling	Left in Well	Packers
Size			
16			Kind of Packer
13			
10			Size of
8 1/4			
6 5/8	2067	2067	Depth set
5 3/16	2200	--	
3			Perf. top
2	2822	2822	Perf. bottom
Liners Used			Perf. top
			Perf. bottom

CASING CEMENTED \_\_\_\_\_ SIZE \_\_\_\_\_ No. Ft. \_\_\_\_\_ Date \_\_\_\_\_  
COAL WAS ENCOUNTERED AT \_\_\_\_\_ FEET \_\_\_\_\_ INCHES  
\_\_\_\_\_ FEET \_\_\_\_\_ INCHES FEET \_\_\_\_\_ INCHES  
\_\_\_\_\_ FEET \_\_\_\_\_ INCHES FEET \_\_\_\_\_ INCHES

Formation	Color	Hard or Soft	Top	Bottom	Oil, Gas or Water	Depth Found	Remarks
Big Injun			2100	2205			
Gas			2115	2127			
Squaw			2265	2325			
Thirty-Foot			2700	2713			
Stray (Gordon)			2780	2785			
Gordon			2813	2820			
Oil			2814	2818			
Total Depth				2822			



JAN 2 1954

(Over) JAN 2 REC'D