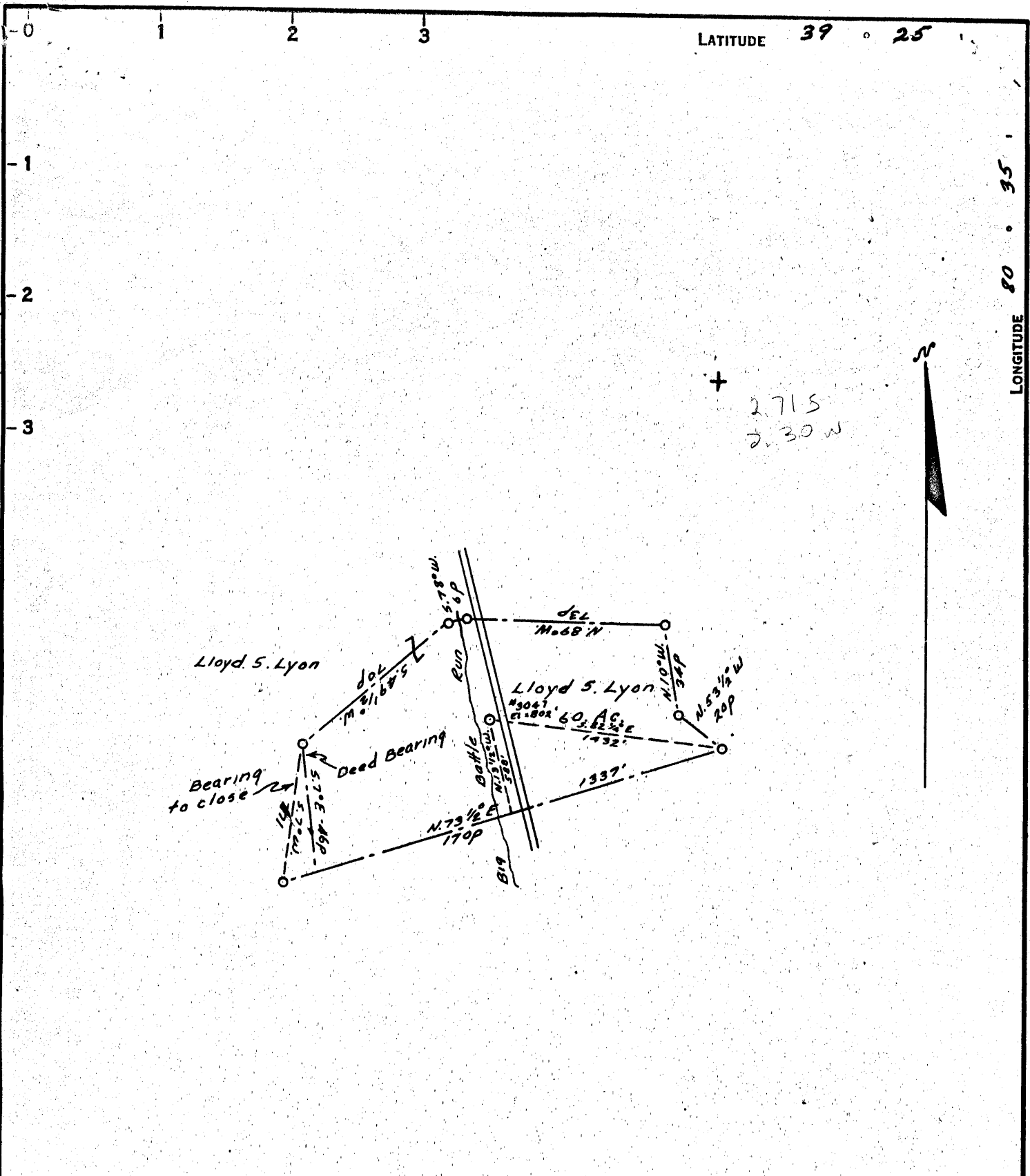


LATITUDE 39 ° 25

LONGITUDE 80 ° 35



COAL OWNED BY _____

NEW LOCATION.....

DRILL DEEPER.....

ABANDONMENT.....

COMPANY The Manufacturers Light & Heat Co.

ADDRESS 800 Union Trust Bldg. Pgh. Pa.

FARM Lloyd S. Lyon

TRACT _____ ACRES 80 LEASE No. 8604

WELL (FARM) No. 1 SERIAL No. 3047

ELEVATION (SPIRIT LEVEL) 802'

QUADRANGLE Centerpoint

COUNTY Doddridge DISTRICT McClellan

ENGINEER Thomas E. Virgin

ENGINEER'S REGISTRATION No. 1503

FILE No. _____ DRAWING No. Y-13-856

DATE 17 July 1953 SCALE 1" = 800'

STATE OF WEST VIRGINIA
DEPARTMENT OF MINES
OIL AND GAS DIVISION
CHARLESTON

WELL LOCATION MAP

FILE No. DOD-1004-A

+ DENOTES LOCATION OF WELL ON UNITED STATES TOPOGRAPHIC MAPS. SCALE 1 TO 62,500. LATITUDE AND LONGITUDE LINES BEING REPRESENTED BY BORDER LINES AS SHOWN.

- DENOTES ONE INCH SPACES ON BORDER LINE OF ORIGINAL TRACING.

70491 on CN6 maps



STATE OF WEST VIRGINIA
DEPARTMENT OF MINES
OIL AND GAS DIVISION

955

WELL RECORD

Permit No. 1004-A

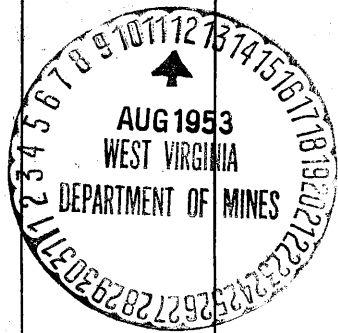
Oil or Gas Well Gas
(KIND)

Company The Manufacturers Light & Heat Company
Address 800 Union Trust Bldg., Pgh., Penna.
Farm Lloyd S. Lyon Acres 60
Location (waters) _____
Well No. 1-3047 Elev. 802'
District McClellan County Doddridge
The surface of tract is owned in fee by Lloyd S. Lyon
Address _____
Mineral rights are owned by _____
Address _____
Drilling commenced December 9, 1925
Drilling completed February 18, 1926
Date Shot _____ From _____ To _____
With _____
Open Flow _____ /10ths Water in _____ Inch
_____ /10ths Merc. in _____ Inch
Volume _____ Cu. Ft.
Rock Pressure 52 lbs. _____ hrs.
Oil _____ bbls., 1st 24 hrs.
Fresh water _____ feet _____ feet
Salt water _____ feet _____ feet

Casing and Tubing	Used in Drilling	Left in Well	Packers
Size			Kind of Packer
16			
13			
10	<u>310 1/2</u>		Size of
8 1/4	<u>910</u>	<u>910</u>	
6 1/2	<u>1753 1/2</u>	<u>1753 1/2</u>	Depth set
5 3/16			
3			Perf. top
2			Perf. bottom
Liners Used			Perf. top
			Perf. bottom

CASING CEMENTED _____ SIZE _____ No. Ft. _____ Date _____
COAL WAS ENCOUNTERED AT _____ FEET _____ INCHES
_____ FEET _____ INCHES FEET _____ INCHES
_____ FEET _____ INCHES FEET _____ INCHES

Formation	Color	Hard or Soft	Top	Bottom	Oil, Gas or Water	Depth Found	Remarks
Pgh. Coal			414	417	Steel Line		
Little Dunkard			810	832	White Havel		
Big Dunkard			895	915	Hard		
Gas Sand			1015	1045			
1st Salt Sand			1065	1120			
2nd Salt Sand			1120	1210	Water 1190 - 2 Bailers per hour		
3rd Salt Sand			1310	1400	Water 1340 - 6 Bailers per hour		
Maxon Sand			1555	1590	Gas at 1580 to 1585 - Steel Line		
Little Line			1670	1684			
Pencil Cave			1684	1700			
Big Line			1700	1765			
Big Injun Sand			1765	1915	Gas at 1802 to 1806 - Steel Line		
Gantz Sand			2045	2125	Show of water with gas		
30 Foot			2275	2295	Break at 1828 to 1832		
Stray			2487	2510	Reduced hole to 5 3/16	2492 - Steel	
Gordon Sand			2550	2553		Lin	
4th Sand			2588	2590	Gas at 2589 to 2590 - Steel Line		
5th Sand			2794	2798	Gas at 2796 to 2798 - Steel Line		
Total Depth				2900			



JAN 2 1954

(Over), JAN 2 1954

Formation	Color	Hard or Soft	Top	Bottom	Oil, Gas or Water	Depth Found	Remarks
						6	

Date August 10, 1953

APPROVED **THE MANUFACTURERS LIGHT & HEAT COMPANY**, Owner

By J. S. Cooper
LAND AGENT (Title)