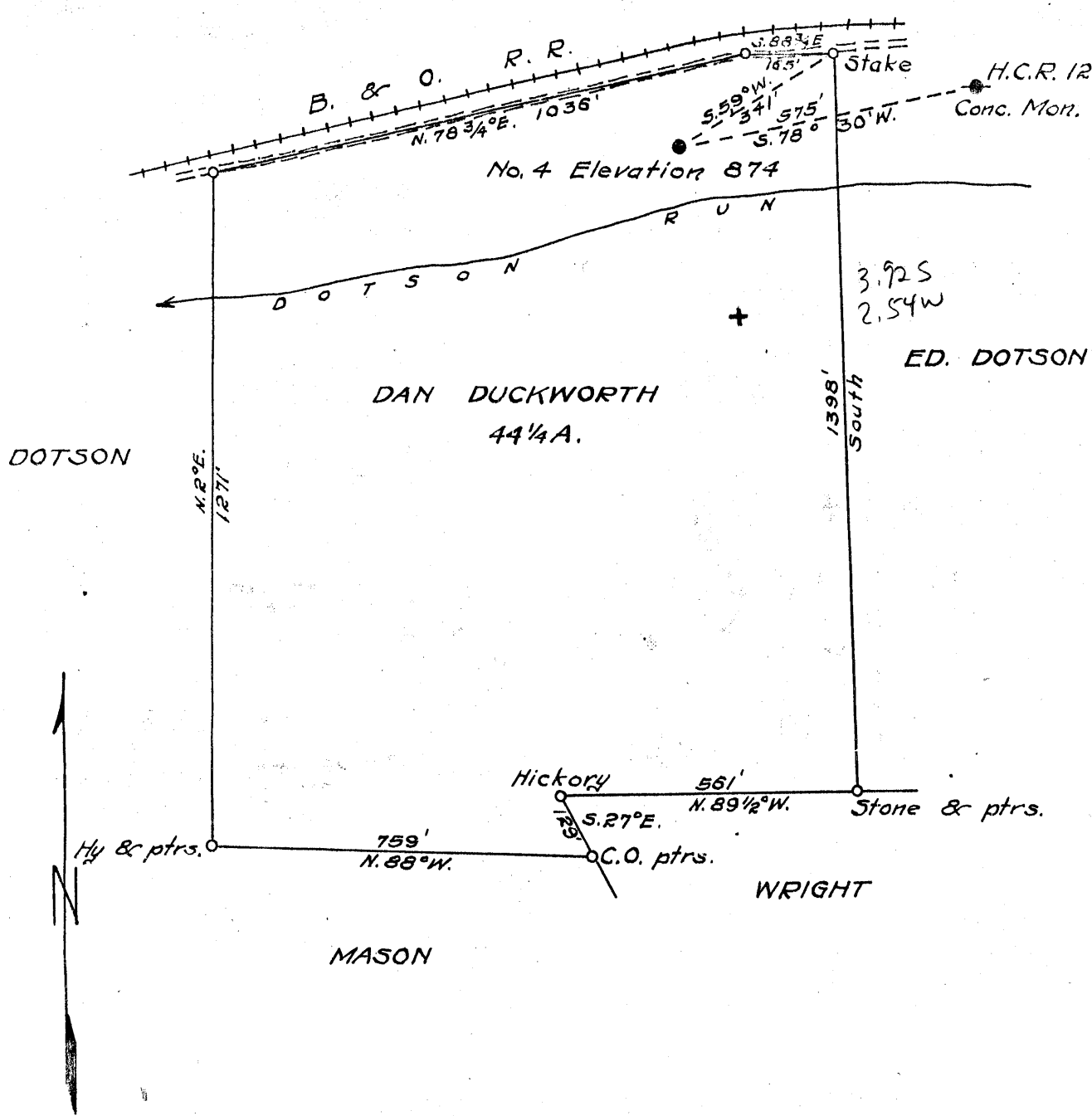


WELLS



New Location   
 Drill Deeper   
 Abandonment

Company MACKEY & WHITE  
 Address RAVEN ROCK, W. VA.  
 Farm DAN DUCKWORTH  
 Tract \_\_\_\_\_ Acres 44 1/4 Lease No. \_\_\_\_\_  
 Well (Farm) No. 4 Serial No. \_\_\_\_\_  
 Elevation (Spirit Level) 874  
 Quadrangle WEST UNION  
 County DODDRIDGE District CENTRAL  
 Engineer B. F. RINEHART  
 Engineer's Registration No. 648  
 File No. \_\_\_\_\_ Drawing No. 958-CD  
 Date June 22, 1953 Scale 1 in. = 300 ft.

STATE OF WEST VIRGINIA  
 DEPARTMENT OF MINES  
 OIL AND GAS DIVISION  
 CHARLESTON

WELL LOCATION MAP  
 FILE NO. DOD-998-A

+ Denotes location of well on United States Topographic Maps, scale 1 to 62,500, latitude and longitude lines being represented by border lines as shown.

- Denotes one inch spaces on border line of original tracing.



STATE OF WEST VIRGINIA  
DEPARTMENT OF MINES  
OIL AND GAS DIVISION

934

WELL RECORD

Permit No. 113-A

Oil or Gas Well \_\_\_\_\_  
(KIND)

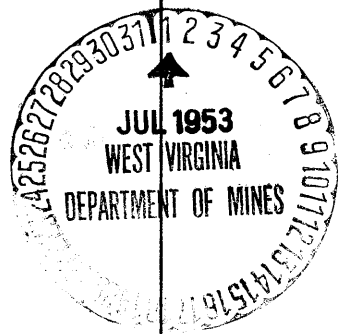
Company Mackey & White  
Address Raven Rock, W. Va.  
Farm Dan Duckworth Acres 44  
Location (waters) Dotson Run  
Well No. 4 Elev. 974  
District Central County Doddridge  
The surface of tract is owned in fee by Duckworth hrs.  
Greenwood Address W. Va.  
Mineral rights are owned by Same  
Address \_\_\_\_\_  
Drilling commenced 1930  
Drilling completed No record of exact  
Date Shot From dates To \_\_\_\_\_  
With \_\_\_\_\_

Casing and Tubing	Used in Drilling	Left in Well	Packers
Size			Kind of Packer
16			
13			
10			Size of
8 1/4			
6	<u>1700</u>	<b>1748</b>	Depth set
5 3/16	<u>✓</u>	<b>1765</b>	
3			Perf. top
2		<b>1850</b>	Perf. bottom
Liners Used	<u>✓</u>		Perf. top
			Perf. bottom

Open Flow \_\_\_\_\_ /10ths Water in \_\_\_\_\_ Inch  
\_\_\_\_\_ /10ths Merc. in \_\_\_\_\_ Inch  
Volume \_\_\_\_\_ Cu. Ft.  
Rock Pressure \_\_\_\_\_ lbs. \_\_\_\_\_ hrs.  
Oil \_\_\_\_\_ bbls., 1st 24 hrs.  
Fresh water \_\_\_\_\_ feet \_\_\_\_\_ feet  
Salt water \_\_\_\_\_ feet \_\_\_\_\_ feet

CASING CEMENTED \_\_\_\_\_ SIZE \_\_\_\_\_ No. Ft. \_\_\_\_\_ Date \_\_\_\_\_  
COAL WAS ENCOUNTERED AT \_\_\_\_\_ FEET \_\_\_\_\_ INCHES  
\_\_\_\_\_ FEET \_\_\_\_\_ INCHES FEET \_\_\_\_\_ INCHES  
\_\_\_\_\_ FEET \_\_\_\_\_ INCHES FEET \_\_\_\_\_ INCHES

Formation	Color	Hard or Soft	Top	Bottom	Oil, Gas or Water	Depth Found	Remarks
Second salt sand			1317	to 1353			
Third "			1440	to 1480			
Maxon Sand			1674	to 1700			
Big Lime			1746	to 1832			
Injun Sand			1832	oil pay at 1846			
Total Depth			1871.				



Formation	Color	Hard or Soft	Top	Bottom	Oil, Gas or Water	Depth Found	Remarks

Date June 30, 1953, 19\_\_\_\_\_

APPROVED Mackey & White, Owner

By *E. W. White* Partner  
(Title)