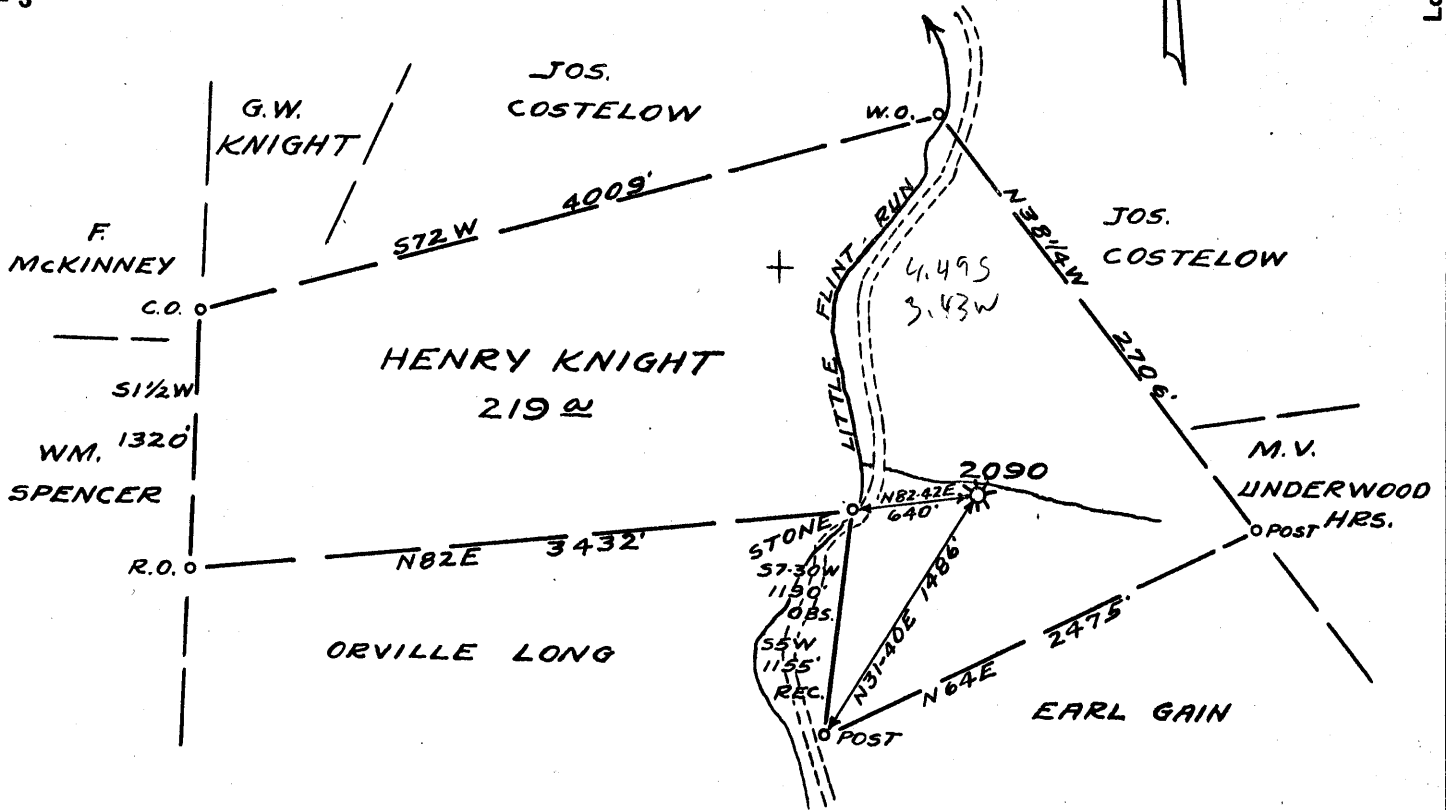


Latitude 39° 25'

Longitude 80° 40'



7.5' loc
 1.655 302230
 1, 28W 804230

New Location... 4.535
 Drill Deeper.....
 Abandonment..... 3.51W } calc 15' loc

Company EQUITABLE GAS-W.VA.DIV.

Address CLARKSBURG, W.VA.

Farm HENRY KNIGHT

Tract _____ Acres 200 Lease No. 5114

Well (Farm) No. ONE Serial No. 2090

Elevation (Spirit Level) 896' V.B.

Quadrangle CENTERPOINT S.W. 14

County DODDRIDGE District GRANT

Engineer James D. Jeffries

Engineer's Registration No. 1084

File No. VOL. 175 P. 129 Drawing No. _____

Date MAR. 11, 1953 Scale 1" = 1000'

STATE OF WEST VIRGINIA
 DEPARTMENT OF MINES
 OIL AND GAS DIVISION
 CHARLESTON

WELL LOCATION MAP

FILE NO. DOD-991-A

(was 09 7203)

+ Denotes location of well on United States Topographic Maps, scale 1 to 62,500, latitude and longitude lines being represented by border lines as shown.

- Denotes one inch spaces on border line of original tracing.

K.B.M.



STATE OF WEST VIRGINIA
DEPARTMENT OF MINES
 OIL AND GAS DIVISION

913

WELL RECORD

"GAS"
 Oil or Gas Well (KIND)

Permit No.

Company Equitable Gas Company-West Va Div.

Address Clarksburg, West Va.

Farm Henry Knight Acres 200

Location (waters) Centerpoint S/W. L-1

Well No. 2090 Elev 896' VA

District Grant County Doddridge

The surface of tract is owned in fee by Joseph Costelow

Mineral rights are owned by Stella J. Knight et al.

R.D.#2 Address West Union, W. Va.

Drilling commenced May 18, 1911

Drilling completed July 3rd, 1911

Date Shot From To

With Inch

Open Flow /10ths Water in Inch

 /10ths Merc. in Inch

Volume Cu. Ft.

Rock Pressure lbs. hrs.

Oil bbls., 1st 24 hrs.

Fresh water feet

Salt water feet

Casing and Tubing	Used in Drilling	Left in Well	Packers
Size			Kind of Packer
16			
13	285'	None	Size of
10	1024'	1823'	
8 1/4	1823'	1823'	Depth set
6 5/8			
5 3/16			Perf. top
3			Perf. bottom
2			Perf. top
Liners Used			Perf. bottom

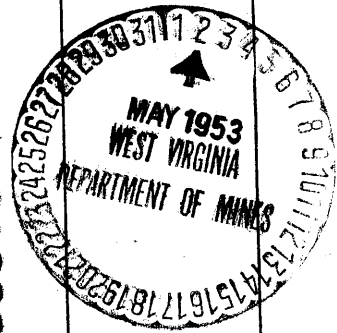
CASING CEMENTED SIZE No. Ft. Date

COAL WAS ENCOUNTERED AT 262 FEET 24 INCHES

 FEET INCHES FEET INCHES

 FEET INCHES FEET INCHES

Formation	Color	Hard or Soft	Top	Bottom	Oil, Gas or Water	Depth Found	Remarks
Clay	Yellow	Soft	0	16			
Lime	Gray	Hard	16	46			
Slate	"	Soft	46	70			
Lime	White	Hard	70	110			
Red Rock	Red	Soft	110	160			
Sand	White	Hard	160	175			
Lime	"	"	175	200			
Slate	"	Soft	200	250			
Lime	"	Hard	250	262			
Native Coal	Black	Soft	262	264			
Lime	White	Hard	264	289			
Slate	"	Soft	289	316			
Lime	"	Hard	316	340			
Red Rock	Red	Soft	340	360			
Sandy Lime	Blue	Hard	360	390			
Red Lime	Red	"	390	440			
Slate	White	Soft	440	470			
Lime	"	Hard	470	500			
"	"	"	500	512			
Slate	Brown	Soft	512	514			
Lime	White	Hard	514	544			
Slate	"	Soft	544	585			
Hurry Up Sand	"	"	585	620			
Slate	Brown	"	620	650			
Sand	White	Hard	650	655			
Red Rock	Red	Soft	655	750			
Sand	White	Hard	750	760			
Red Rock	Red	Soft	760	780			
Lime	White	Hard	780	830			
Slate	"	Soft	830	880			
Sand	"	Hard	880	900			
Red Rock	Red	Soft	900	940			
Sand	Gray	Hard	940	968			
Slate	White	Soft	968	1008			
Big Dunkard	"	Hard	1008	1038			
Lime	Black	"	1038	1048			
Slate	White	Soft	1048	1068			
Sand	"	Hard	1068	1103			
Slate	Gray	Soft	1103	1113			



Formation	Color	Hard or Soft	Top	Bottom	Oil, Gas or Water	Depth Found	Remarks
Gas Sand	White	Hard	1113	1118			
Slate	"	Soft	1118	1280			
1st. Salt Sand	"	Hard	1280	1300			
Slate	Black	Soft	1300	1330			
2nd. Salt Sand	White	Hard	1330	1455			
Slate	Black	Soft	1455	1465			
3rd. Salt Sand	White	Hard	1465	1595			
Slate	Black	Soft	1595	1596			
Maxon Sand	Gray	Hard	1596	1646	Sh. Oil	1630'	
Slate	Black	Soft	1646	1676			
Sand	Gray	Hard	1676	1700			
Slate	White	Soft	1700	1710			
Red Rock	Red	Soft	1710	1740			
Slate	Black	Soft	1740	1750			
Little Linn	Gray	Hard	1750	1768			
Pencil Cove	Black	Soft	1768	2778			
Blue Monday	White	Hard	1778	1800			
Slate	Black	Soft	1800	1805			
Big Linn	White	Hard	1805	1875			
Big Tatum	"	"	1875	2010	Gas	1905-1913'	
Slate	Black	Soft	2010	2025	Gas	1978-1998'	
Sand	White	Hard	2025	2045			
Slate&Shells	Gray	Hard&Soft	2045	2165			
Sand	White	Hard	2165	2190			
Slate	"	Soft	2190	2210			
Linn	"	Hard	2210	2260			
Slate	Black	Soft	2260	2360			
Linn	White	Hard	2360	2380			
Slate&Shells	"	Hard&Soft	2380	2460			
Red Rock	Red	Soft	2460	2465			
Slate&Shells	White	Hard	2465	2578			
Gordon Stray	Gray	"	2578	2585			
Slate	Black	Soft	2585	2588			
Gordon Sand	White	Hard	2588	2598	Gas	2595'	
Slate	Black	Soft	2598	2613			
Total Depth.....				2613			

June 20th, 1949

Date _____, 19____

EQUITABLE GAS COMPANY-WEST VA DIV.

APPROVED _____

19____

Owner

By W. H. M. Masten
(Title)