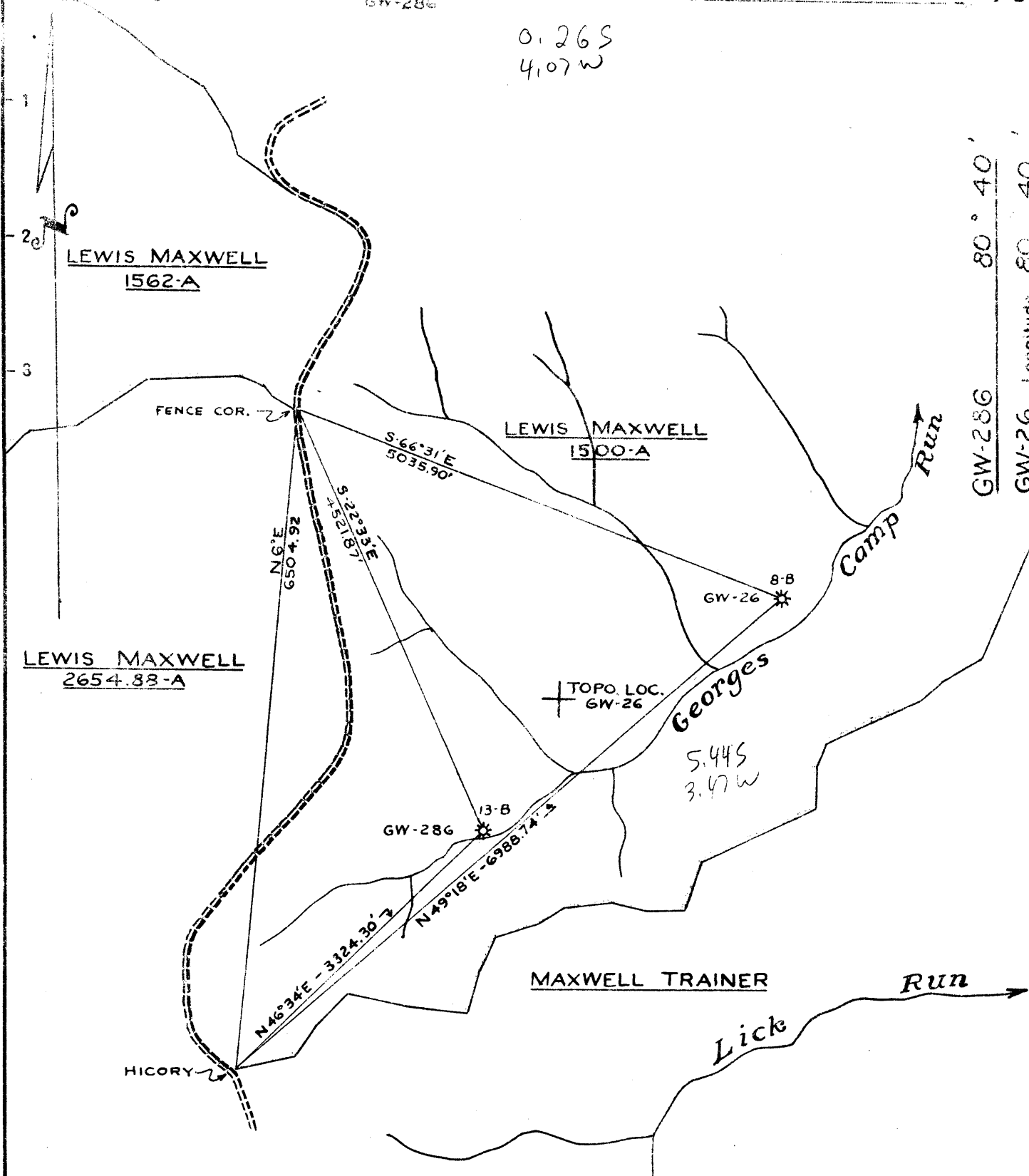


GW-26 Latitude 39° 20'  
 GW-286 " 39° 15'

TOPO. LOC.  
 GW-286

0.26 S  
 4.07 W

80° 40'  
 Longitude 80° 40'



New Location   
 Drill Deeper   
 Abandonment

GW-26 S-5.59" W-3.50"  
 GW-286 S-0.25" W-4.11"

Company Columbian Carbon Co.  
 Address Box 873-Charleston, W. Va.  
 Farm Lewis Maxwell  
 Tract \_\_\_\_\_ Acres 1500 Lease No. C-32-B  
 Well (Farm) No. 13-B Serial No. GW-286  
 Elevation (Spirit Level) GW-26 844'  
GW-286 938'  
 Quadrangle GW-286 Vadis 9-SW  
3-NW  
 County Doddridge District New Milton  
 Engineer \_\_\_\_\_  
 Engineer's Registration No. \_\_\_\_\_  
 File No. \_\_\_\_\_ Drawing No. \_\_\_\_\_  
 Date Sept. 27, 1952 Scale 1" = 1320'

STATE OF WEST VIRGINIA  
 DEPARTMENT OF MINES  
 OIL AND GAS DIVISION  
 CHARLESTON

**WELL LOCATION MAP**

FILE NO. DOD-984-A-#GW-26  
DOD-986-A-#GW-286

+ Denotes location of well on United States Topographic Maps, scale 1 to 62,500, latitude and longitude lines being represented by border lines as shown.

- Denotes one inch spaces on border line of original tracing.



916

STATE OF WEST VIRGINIA  
DEPARTMENT OF MINES  
OIL AND GAS DIVISION

WELL RECORD

Permit No. 151-A

Oil or Gas Well Oil

(KIND)

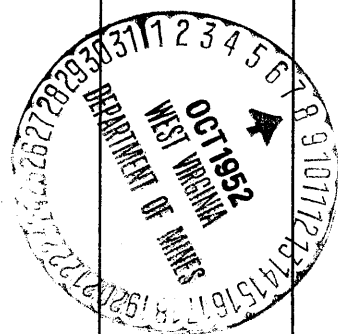
Company Columbian Carbon Company  
 Address Box 873, Charleston 23, W. Va.  
 Farm Lewis Maxwell Acres 1500  
 Location (waters) \_\_\_\_\_  
 Well No. 8-B, GW-26 Elev. 844'  
 District West Union County Doddridge  
 The surface of tract is owned in fee by Lewis Maxwell  
 Address \_\_\_\_\_  
 Mineral rights are owned by \_\_\_\_\_  
 Address \_\_\_\_\_  
 Drilling commenced 10-28-10  
 Drilling completed 12-23-10  
 Date Shot \_\_\_\_\_ From \_\_\_\_\_ To \_\_\_\_\_  
 With 60 Quarts Glycerine & 100# Dynamite  
 Open Flow /10ths Water in \_\_\_\_\_ Inch  
 /10ths Merc. in \_\_\_\_\_ Inch  
 Volume \_\_\_\_\_ Cu. Ft.  
 Rock Pressure \_\_\_\_\_ lbs. \_\_\_\_\_ hrs.  
 Oil 1 1/2 bbls. daily \_\_\_\_\_ bbls., 1st 24 hrs.  
 Fresh water 35' 570-600' feet \_\_\_\_\_ feet  
 Salt water \_\_\_\_\_ feet \_\_\_\_\_ feet

Casing and Tubing	Used in Drilling	Left in Well	Packers
Size Conductor	14'	14'	Kind of Packer
16			
13			
10" <u>over</u>	170'	170'	Size of
8 1/4" <u>over</u>	756'	756'	
6 5/8" <u>1150</u>	1489'	1489'	Depth set
5 3/16			
3			Perf. top
2			Perf. bottom
Liners Used			Perf. top
			Perf. bottom

CASING CEMENTED \_\_\_\_\_ SIZE \_\_\_\_\_ No. Ft. \_\_\_\_\_ Date \_\_\_\_\_

COAL WAS ENCOUNTERED AT \_\_\_\_\_ FEET \_\_\_\_\_ INCHES  
 \_\_\_\_\_ FEET \_\_\_\_\_ INCHES \_\_\_\_\_ FEET \_\_\_\_\_ INCHES  
 \_\_\_\_\_ FEET \_\_\_\_\_ INCHES \_\_\_\_\_ FEET \_\_\_\_\_ INCHES

Formation	Color	Hard or Soft	Top	Bottom	Oil, Gas or Water	Depth Found	Remarks
Coal			226	230	F. water	35'	
Land and Water			570	600	F. water	570-600'	
Little Dunkard			725	760			
Gas Sand			855	910			
1st Salt Sand			1010	1065			
2nd Salt Sand			1210	1270			
3rd Salt Sand			1325	1335			
Red Rock			1405	1420			
Little Lime			1452	1470			
Pencil Cave			1470	1475			
Blue Monday Sand			1475	1500	Oil	1480'	
Big Lime			1500	1572			
Big Injun Sand			1572	1687	Gas	1572'	show
Sand			1800	1900			
Shells			2015	2040			
Pencil Cave			2180	2200			
Gordon Stray			2210				
Gas			2222	2225	Gas	2222-2225	
Gordon Stray - bottom				2239	Oil	2230'	
		Total depth	-----	2267'			



(Over)

JUN 10 1952