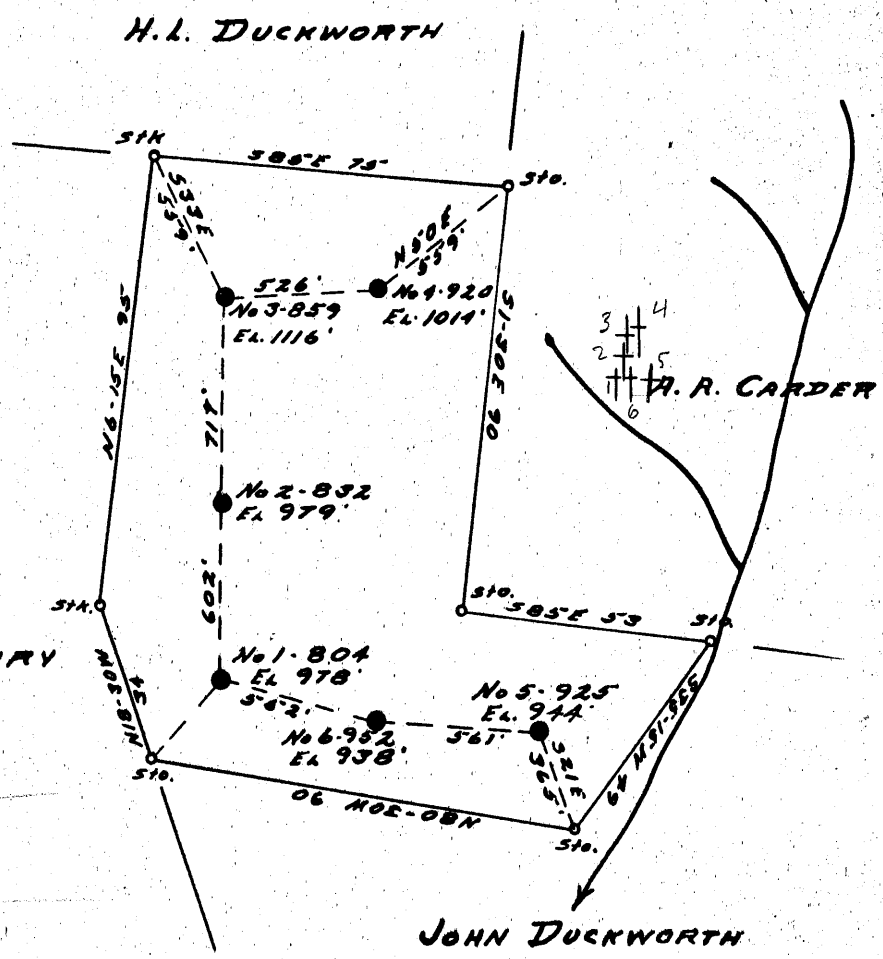


Latitude 39° 20'

Longitude 80° 50'



HIRAM HENRY

1	804	3.75 S	2.50 W
2	832	3.63 S	2.44 W
3	859	3.53 S	2.43 W
4	920	3.49 S	2.37 W
5	925	3.77 S	2.32 W
6	952	3.74 S	2.40 W

- DOD-974-A - #804
- DOD-975-A - #832
- DOD-976-A - #859
- DOD-977-A - #920
- DOD-978-A - #925
- DOD-979-A - #952

New Location..   
 Drill Deeper.....   
 Abandonment.....

Company WEINER BROTHERS  
 Address 1908 CLARK BLDG. PITT. PA.  
 Farm KATE BRANNON HRS  
 Tract \_\_\_\_\_ Acres 66 Lease No. \_\_\_\_\_  
 Well (Farm) No. ALL WELLS Serial No. \_\_\_\_\_  
 Elevation (Spirit Level) AS SHOWN  
 Quadrangle WEST UNION SW B SE.  
 County DODDRIDGE District CENTRAL  
 Engineer R. L. Sweeney  
 Engineer's Registration No. \_\_\_\_\_  
 File No. \_\_\_\_\_ Drawing No. \_\_\_\_\_  
 Date 11-25-52 Scale 1" = 40 FEET

STATE OF WEST VIRGINIA  
 DEPARTMENT OF MINES  
 OIL AND GAS DIVISION  
 CHARLESTON

**WELL LOCATION MAP**  
 FILE NO. See ABOVE

+ Denotes location of well on United States Topographic Maps, scale 1 to 62,500, latitude and longitude lines being represented by border lines as shown.

- Denotes one inch spaces on border line of original tracing.



STATE OF WEST VIRGINIA  
DEPARTMENT OF MINES  
OIL AND GAS DIVISION

902

WELL RECORD

Permit No. 976 H

Oil or Gas Well \_\_\_\_\_ (KIND)

Company Weiner Brothers  
Address 1908 Clark Bldg., - Pittsburgh, Pa.  
Farm Thomas Brannon Hrs. Acres 71  
Location (waters) \_\_\_\_\_  
Well No. 859 Elev. 1116  
District Central County Doddridge  
The surface of tract is owned in fee by \_\_\_\_\_  
Address \_\_\_\_\_  
Mineral rights are owned by \_\_\_\_\_  
Address \_\_\_\_\_

Drilling commenced August 22, 1918 (D. D. 5/26/19)  
Drilling completed 9/24/18 (Comp. D. D. 6/6/19)  
Date Shot yes From \_\_\_\_\_ To \_\_\_\_\_  
With \_\_\_\_\_

Open Flow \_\_\_\_\_ /10ths Water in \_\_\_\_\_ Inch  
\_\_\_\_\_ /10ths Merc. in \_\_\_\_\_ Inch  
Volume \_\_\_\_\_ Cu. Ft.  
Rock Pressure \_\_\_\_\_ lbs. \_\_\_\_\_ hrs.  
Oil \_\_\_\_\_ bbls., 1st 24 hrs.  
Fresh water \_\_\_\_\_ feet \_\_\_\_\_ feet  
Salt water \_\_\_\_\_ feet \_\_\_\_\_ feet

Casing and Tubing	Used in Drilling	Left in Well	Packers
Size			Kind of Packer
16			
13			
10			Size of
8 1/4	1282'	1282'	
6 3/4	2008'	2008'	Depth set
5 3/16	2010'	2010'	
3			Perf. top
2	2008' (117)	2008' (117)	Perf. bottom
Liners Used			Perf. top
			Perf. bottom

CASING CEMENTED \_\_\_\_\_ SIZE \_\_\_\_\_ No. Ft. \_\_\_\_\_ Date \_\_\_\_\_

COAL WAS ENCOUNTERED AT \_\_\_\_\_ FEET \_\_\_\_\_ INCHES  
\_\_\_\_\_ FEET \_\_\_\_\_ INCHES FEET \_\_\_\_\_ INCHES  
\_\_\_\_\_ FEET \_\_\_\_\_ INCHES FEET \_\_\_\_\_ INCHES

Formation	Color	Hard or Soft	Top	Bottom	Oil, Gas or Water	Depth Found	Remarks
Pittsburgh	Coal		770	772			
Little Dunkard			1085	1125			
Big Dunkard			1200	1225			
Gas Sand			1255	1295			
1st Salt Sand			1524	1585			
2nd Salt Sand			1595	1795			
Maxton			1893	1956	Gas 1913-35'		
Little Lime			1964	1989			
Pencil Cave			1989	2002			
Big Lime			2002	2078	1st Total depth 2008'		
Big Injun			2078		Oil, gas 2115-9 shot		
Total Depth				2125			

(C)