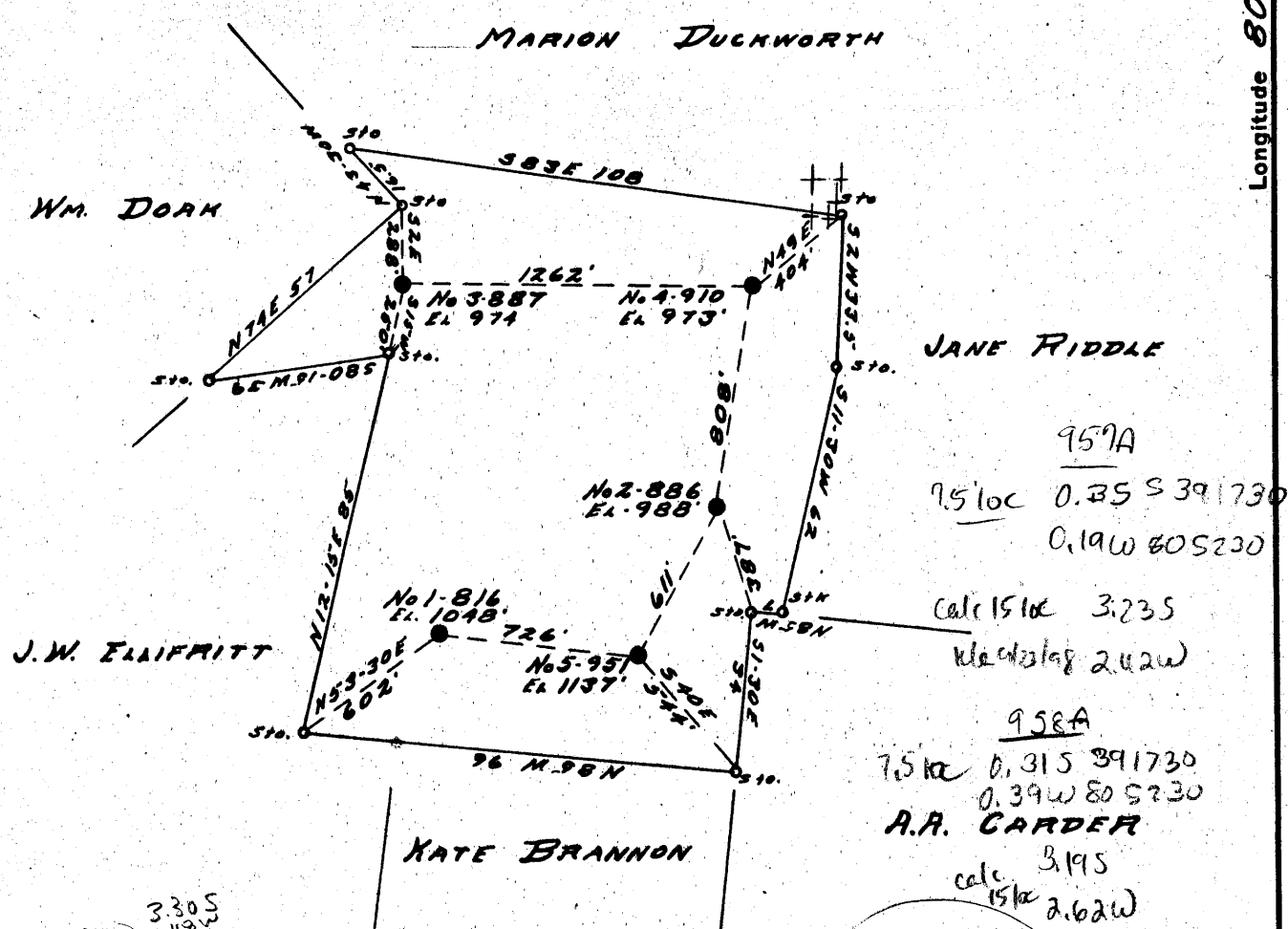


Latitude 39° 20'

Longitude 80° 50'



816) 3.30 S  
2.43 W  
 886) 3.22 S  
2.35 W  
 887) 3.11 S  
2.48 W  
 910) 3.10 S  
2.33 W  
 951) 3.31 S  
2.40 W

956A - was 017 71110  
 0.47 S 39 1730  
 7.5 loc 0.33 W 80 S 230  
 Calc 3.34 S  
 15 2.56 W  
 loc  
 7.5 loc 0.47 S 39 1730  
 0.12 W 80 S 230  
 Calc 3.34 S  
 15 2.56 W  
 loc

DOD - 956-A - # 816 was 017 71110  
 DOD - 957-A - # 886  
 DOD - 958-A - # 887  
 DOD - 959-A - # 910 was 017 71106  
 DOD - 960-A - # 951 was 71111

New Location...  959A 7.5 loc Calc 15 loc  
 Drill Deeper.....  was 0.23 S 39 1730 3.11 S  
 Abandonment.....  71106 0.12 W 80 S 230 2.35 W 71111 0.17 W 80 S 230 2.41 W

Company WEINER BROTHERS  
 Address 1908 CLARK BLDG. PITTPA  
 Farm H.L. DUCKWORTH  
 Tract \_\_\_\_\_ Acres 27 Lease No. \_\_\_\_\_  
 Well (Farm) No. ALL W 222 Serial No. \_\_\_\_\_  
 Elevation (Spirit Level) AS SHOWN  
 Quadrangle WEST UNION SW.  
 County DODDRIDGE District CENTRAL  
 Engineer R.L. SWEENEY  
 Engineer's Registration No. \_\_\_\_\_  
 File No. \_\_\_\_\_ Drawing No. \_\_\_\_\_  
11-25-52 Scale 1" = 40 FEET

STATE OF WEST VIRGINIA  
 DEPARTMENT OF MINES  
 OIL AND GAS DIVISION  
 CHARLESTON

**WELL LOCATION MAP**  
 FILE NO. See Above

+ Denotes location of well on United States Topographic Maps, scale 1 to 62,500, latitude and longitude lines being represented by border lines as shown.

- Denotes one inch spaces on border line of original tracing.



STATE OF WEST VIRGINIA  
DEPARTMENT OF MINES  
OIL AND GAS DIVISION

934

WELL RECORD

Permit No. 959-A

Oil  Gas Well  (KIND)

Company Weiner Brothers  
 Address Pittsburgh, Pa.  
 Farm H. L. Duckworth Acres 78  
 Location (waters) \_\_\_\_\_  
 Well No. 910 Elev. 973  
 District Central County Doddridge  
 The surface of tract is owned in fee by \_\_\_\_\_  
 Address \_\_\_\_\_  
 Mineral rights are owned by \_\_\_\_\_  
 Address \_\_\_\_\_  
 Drilling commenced April 19, 1919  
 Drilling completed January 16, 1920  
 Date Shot \_\_\_\_\_ From \_\_\_\_\_ To \_\_\_\_\_  
 With \_\_\_\_\_  
 Open Flow \_\_\_\_\_ /10ths Water in \_\_\_\_\_ Inch  
 \_\_\_\_\_ /10ths Merc. in \_\_\_\_\_ Inch  
 Volume \_\_\_\_\_ Cu. Ft.  
 Rock Pressure \_\_\_\_\_ lbs. \_\_\_\_\_ hrs.  
 Oil \_\_\_\_\_ bbls., 1st 24 hrs.  
 Fresh water \_\_\_\_\_ feet \_\_\_\_\_ feet  
 Salt water \_\_\_\_\_ feet \_\_\_\_\_ feet

Casing and Tubing	Used in Drilling	Left in Well	Packers
Size			
16			Kind of Packer
13			
10	<u>334</u>	<u>334</u>	Size of <u>10"</u>
8 1/4 <u>1100</u>	<u>1119</u>	<u>1119</u>	<u>19</u>
6 1/2 <u>1150</u>	<u>1750</u>	<u>1750</u>	Depth set <u>680</u>
5 3/16 <u>1800</u>	<u>1863</u>	<u>1863</u>	<u>63</u>
3			Perf. top
2 <u>L</u>	<u>1750</u>	<u>1750 (212)</u>	Perf. bottom
Liners Used			Perf. top
			Perf. bottom

CASING CEMENTED \_\_\_\_\_ SIZE \_\_\_\_\_ No. Ft. \_\_\_\_\_ Date \_\_\_\_\_

COAL WAS ENCOUNTERED AT \_\_\_\_\_ FEET \_\_\_\_\_ INCHES  
 \_\_\_\_\_ FEET \_\_\_\_\_ INCHES \_\_\_\_\_ FEET \_\_\_\_\_ INCHES  
 \_\_\_\_\_ FEET \_\_\_\_\_ INCHES \_\_\_\_\_ FEET \_\_\_\_\_ INCHES

Formation	Color	Hard or Soft	Top	Bottom	Oil, Gas or Water	Depth Found	Remarks
Little Dunkard			935	950			
Big Dunkard			1000	1035			
Gas Sand			1085	1125			Oil show 1025'-30'
First Salt Sand			1340	1435			
Second Salt Sand			1475	1500			
Maxton			1717	1796			
Little Lime			1815	1830			Gas 1724-46 (first total depth 1750')
Pencil Cave			1830	1851			
Big Lime			1851	1925			
Big Injun			1925				Oil, gas 1945'-53' - shot
Total Depth				1962			

