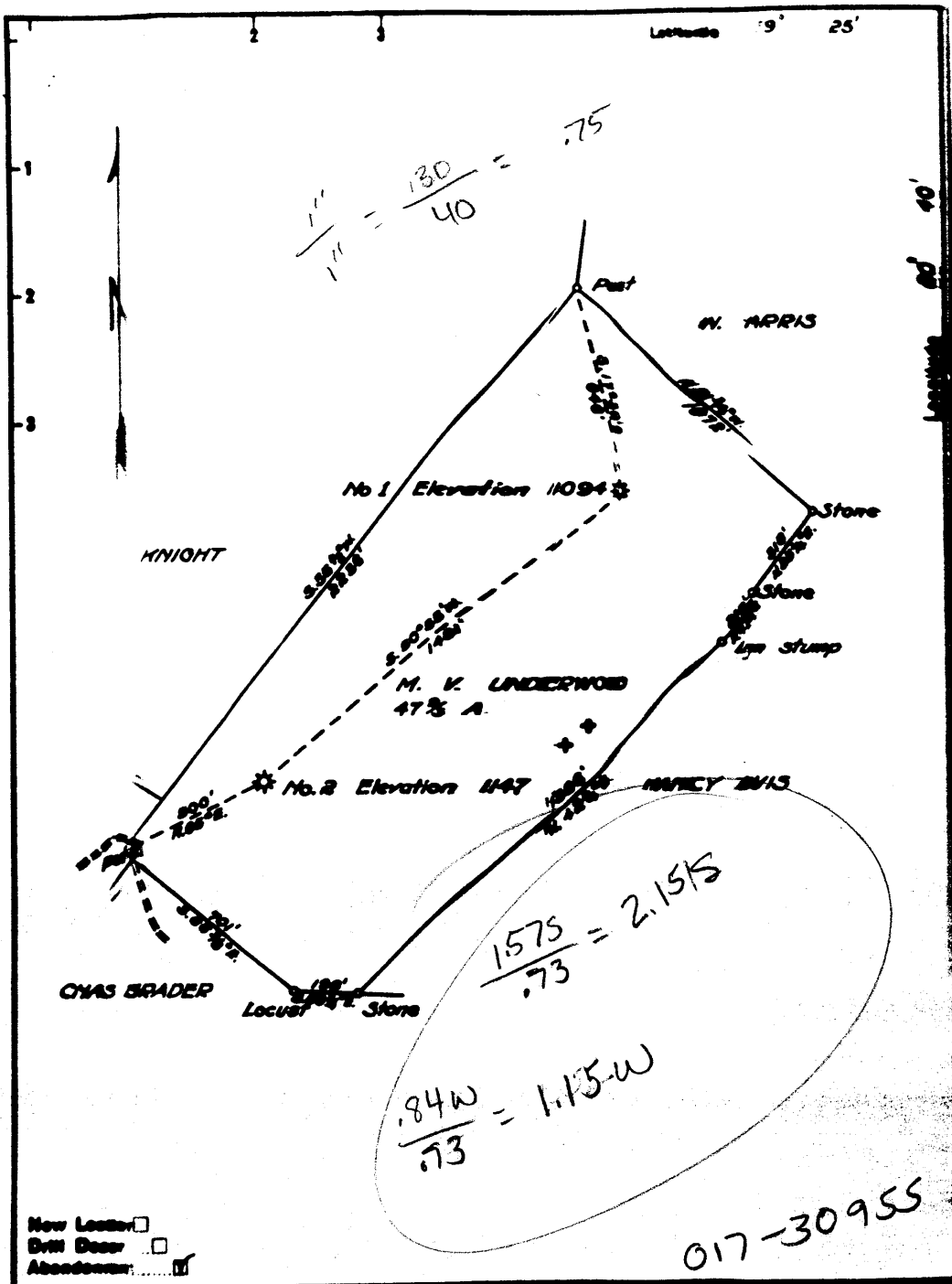


.75

Longitude 9' 25'



2.155 }  
 1.15W } centerpoint we

(098)

New Ledger   
 DWH Desc   
 Abandonment

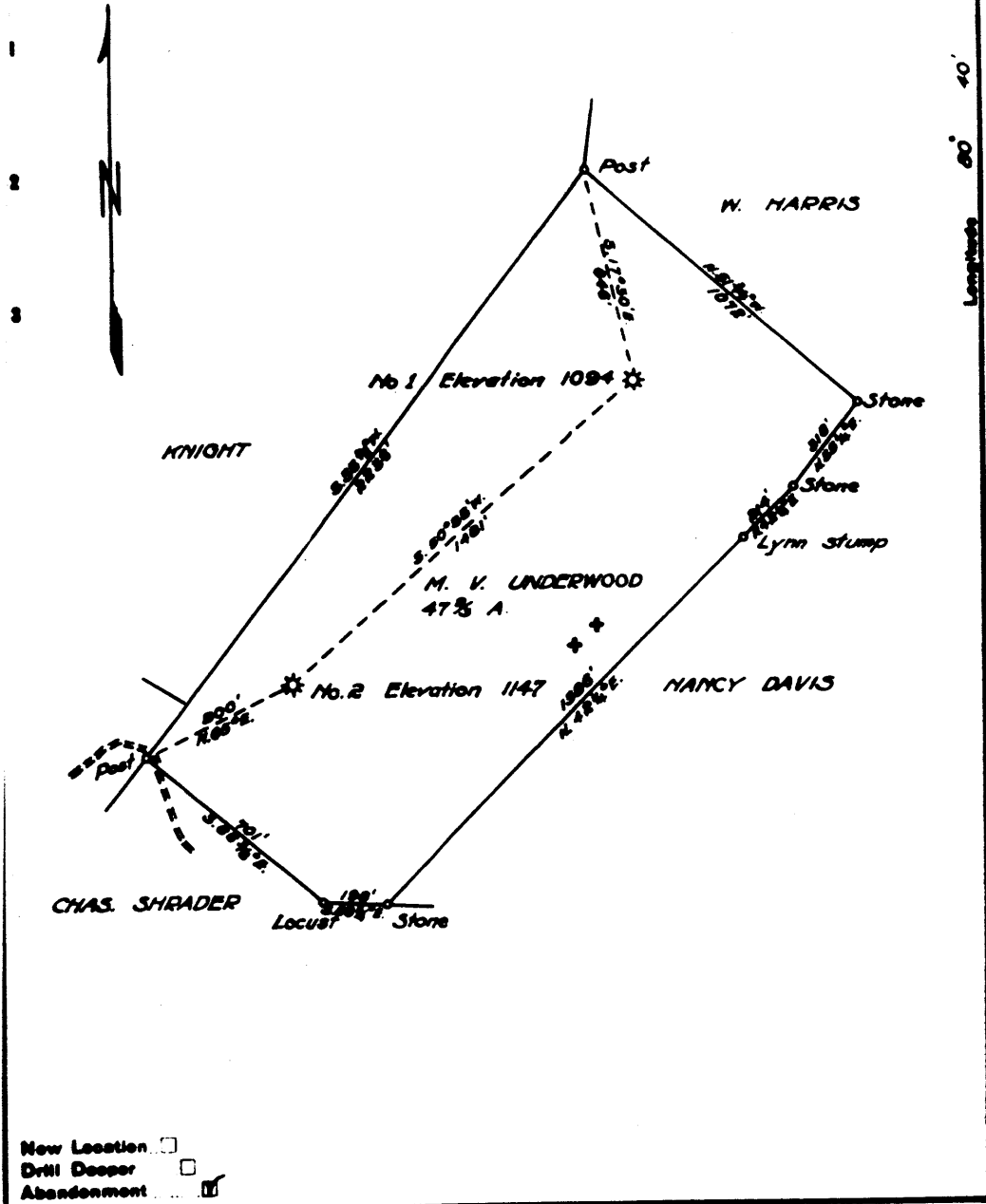
Company: ZEPHER STATE OIL REF. CORP  
 Address: RIVERSBURG, W. VA.

STATE OF WEST VIRGINIA  
 DEPARTMENT OF MINES

017-30955

39° 25'

Smithsony  
525040E  
435590DN



Company QUAKER STATE OIL REF. CORP  
 Address PARKERSBURG, W. VA.  
 Farm M. V. UNDERWOOD  
 Tract Acres 47 3/4 Lease No. \_\_\_\_\_  
 Well (Farm) No. 1 & 2 Serial No. \_\_\_\_\_

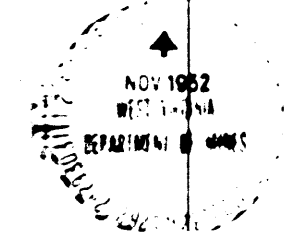
STATE OF WEST VIRGINIA  
 DEPARTMENT OF MINES  
 OIL AND GAS DIVISION  
 CHARLESTON  
**WELL LOCATION MAP**

Company QUAKER STATE OIL REF. CORP  
 Address Box 1799, Parkersburg, W. Va.  
 Farm M. V. Underwood  
 Location (water): Severy Run  
 Well No. 2  
 District Grant  
 The surface of tract is owned in fee by \_\_\_\_\_  
 Mineral rights are owned by E. A. Underwood  
 Address West Union, W. Va.  
 Drilling commenced September 10, 1909  
 Drilling completed November 19, 1909  
 Date Shallow 12/09 From 2784' To 2792'  
 With 40 ggs.  
 Open Flow /10ths Water in \_\_\_\_\_ Inset \_\_\_\_\_  
/10ths Merc. in \_\_\_\_\_ Inset \_\_\_\_\_  
 Volume 2,000,000 Cu. Ft.  
 Rock Pressure \_\_\_\_\_ lbs. per sq. in.  
 Oil \_\_\_\_\_ bbls. in 24 hrs.  
 Fresh water \_\_\_\_\_ gal. per day  
 Salt water 1630 gal. per day

Casing and Tubing	Used in Drilling	Left in Well	Packers
Size _____			Kind of Packers _____
_____	255	_____	Hookmill
_____	1381	1381	Size of <u>6-5/8" x 2"</u>
_____	2021	2021	Depth set <u>2040</u>
5.3 16			
3	2840	460	Perf. top _____
2	2040	2040	Perf. bottom _____
Liners Used _____			Perf. top _____
			Perf. bottom _____

CASING CEMENTED \_\_\_\_\_ SIZE \_\_\_\_\_ No. Ft. \_\_\_\_\_ Date \_\_\_\_\_  
 COAL WAS ENCOUNTERED AT 690 FEET \_\_\_\_\_ INCHES  
 \_\_\_\_\_ FEET \_\_\_\_\_ INCHES FEET \_\_\_\_\_ INCHES  
 \_\_\_\_\_ FEET \_\_\_\_\_ INCHES FEET \_\_\_\_\_ INCHES

Formation	Color	Hard or Soft	To	Bottom	Oil, Gas or Water	Depth Found	Remarks
Conductor				14			
Water				70	water	70	
Coal			21	212			
Coal, Pittsburgh			69	692			
Sand, Little Dunbar			115	1150			
Sand, Big Dunbar			129	1260			
Sand, Gas Sand			135	1360			
Sand, 1st Bed			138	1445			
Sand, 2nd Bed			152	1580			
Sand, 3rd Bed			162	1673	water	1630	5 barrels
Sand, <del>4th Bed</del>			189	1950			
Little Lime			198	1970			
Pocahontas			197	1985			
Big Lime			202	2067			
Sand, Big Iron			208	2190	Gas	2089	
Sand, <del>Small</del>			228	2225			
Sand, <del>Small</del>			234	2450			
Sand, Filly Pt.			257	2610			
Sand, Tully Pt.			267	2700			
Sand, Garden Strip			278	2794	Gas	2792	
Sand, <del>Garden Strip</del>			281	2832	Gas	2815	
Total Depth				2840			



McClellan District, Toddridge County, W. Va.

70270

W.....  
 S. H. Trainer, Contractor.  
 Drilling commenced Sept. 10, 1909; completed Nov. 19, 1909.  
 Elevation.....  
 10" casing, 255' (pulled); 8", 1301'; 6", 2091'; 3" tubing, 2840'.  
 3" packer 445' from bottom.  
 Packer on bottom of 6" casing.  
 Shot Nov. 17, 1909, with 40 lbs., in Gordon Stray Sand.  
 Shot Nov. 17, 1909, with 40 lbs., in Gordon Sand.  
 Put up with 4" connections.  
 Showed 8/10 water in 6" before shot; 1,400 ft.  
 Showed 17/10 water in 6" after shot; 2,000 ft.  
 Ruled 7-12-21, with 3" tubing, to Gants 2313', with 6" H. " packer  
 set at 2040'.  
 3" string of tools with long stroke jaws, 3" tubing spear, and 440'  
 of 3" tubing left in hole.  
 7-2-21. Shot with 10 lbs., at 2089-2099'; no good results.  
 Record in Eastern Petroleum Co. Well Record book of Clifton Oil & Gas Co.

	Top.	Bottom.
Conductor	0	14
(water, 70')		
Native coal	210	212
Pittsburgh Coal	690	692
Little Hard Sand	1170	1170
Big Hard Sand	1200	1260
Gins Sand	1325	1360
First Salt Sand	1331	1445
Second Salt Sand	1520	1480
3rd Salt Sand (water, 1670', 5 boilers)	1625	1675
Horton Sand	1890	1950
Little Line	1950	1970
Pencil Saw	1970	1985
Big Line	2021	2067
Blue Monday Sand // // // //	1985	2021
Big Injun Sand (gas, 2089-2157')	2067	2190
Lower Sand	2206	2225
Gants Sand	2340	2450
Fifty-foot Sand	2575	2610
Thirty-foot Sand	2675	2700
Gordon Stray Sand (gas, 2792')	2734	2794
Gordon Sand (gas, 2815')	2813	2832
Total depth		2840

NOW 955-A



#100 DA Co Rep

STATE OF WEST VIRGINIA  
DEPARTMENT OF MINES  
OIL AND GAS DIVISION

946

WELL RECORD

Permit No. 9554 Oil or Gas Well Gas (KIND)

Company QUAKER STATE OIL REFINING CORPORATION

Address Box 1789, Parkersburg, W. Va.

Farm M. V. Underwood Acres 47-2/3

Location (waters) Poverty Run

Well No. 2 Elev. 1,147'

District Grant County Doddridge

The surface of tract is owned in fee by \_\_\_\_\_

Address \_\_\_\_\_

Mineral rights are owned by F. H. Underwood

Address West Union, W. Va.

Drilling commenced September 10, 1909

Drilling completed November 19, 1909

Date Shot 11/17/09 From 2784' To 2794'

With 40 qts.

Open Flow /10ths Water in Inch \_\_\_\_\_

/10ths Merc. in Inch \_\_\_\_\_

Volume 2,000,000 Cu. Ft.

Rock Pressure \_\_\_\_\_ lbs. \_\_\_\_\_ hrs.

Oil \_\_\_\_\_ bbls., 1st 24 hrs.

Fresh water \_\_\_\_\_ feet \_\_\_\_\_ feet

Salt water 1630 feet \_\_\_\_\_ feet

Casing and Tubing	Used in Drilling	Left in Well	Packers
Size			Kind of Packer
16			Hookwall
13			Size of <u>6-5/8" x 2"</u>
10	255	---	Depth set <u>2040</u>
8 1/4	1381	1381	
6 5/8	2021	2021	
5 3/16			
3	2840	440 ✓	Perf. top
2 <u>2040</u>	2040	2040 <u>20</u>	Perf. bottom
Liners Used			Perf. top
			Perf. bottom

CASING CEMENTED \_\_\_\_\_ SIZE \_\_\_\_\_ No. Ft. \_\_\_\_\_ Date \_\_\_\_\_

COAL WAS ENCOUNTERED AT 690 FEET \_\_\_\_\_ INCHES

\_\_\_\_\_ FEET \_\_\_\_\_ INCHES \_\_\_\_\_ FEET \_\_\_\_\_ INCHES

\_\_\_\_\_ FEET \_\_\_\_\_ INCHES \_\_\_\_\_ FEET \_\_\_\_\_ INCHES

Formation	Color	Hard or Soft	Top	Bottom	Oil, Gas or Water	Depth Found	Remarks
Conductor				14			
Water				70	Water	70	
Coal			210	212			
Coal, <u>Pittsburgh</u>			690	692			
Sand, <u>Little Dunkard</u>			1130	1150			
Sand, <u>Big Dunkard</u>			1230	1260			
Sand, <u>Gas Sand</u>			1325	1360			
Sand, <u>1st Salt</u>			1381	1445			
Sand, <u>2nd Salt</u>			1520	1580			
Sand, <u>3rd Salt</u>			1625	1673	Water	1630	5 bailers
Sand, <u>Maxton</u>			1890	1950			
Little Lime			1950	1970			
Pencil Cave			1970	1985			
Big Lime			2021	2067			
Sand, <u>Big Injun</u>			2067	2190	Gas	2089	
Sand, <u>Squaw</u>			2206	2225			
Sand, <u>Gantz</u>			2340	2450			
Sand, <u>Fifty Ft.</u>			2575	2610			
Sand, <u>Thirty Ft.</u>			2675	2700			
Sand, <u>Gordon Stray</u>			2784	2794	Gas	2792	
Sand, <u>Gordon</u>			2813	2832	Gas	2815	
Total Depth				2840			





