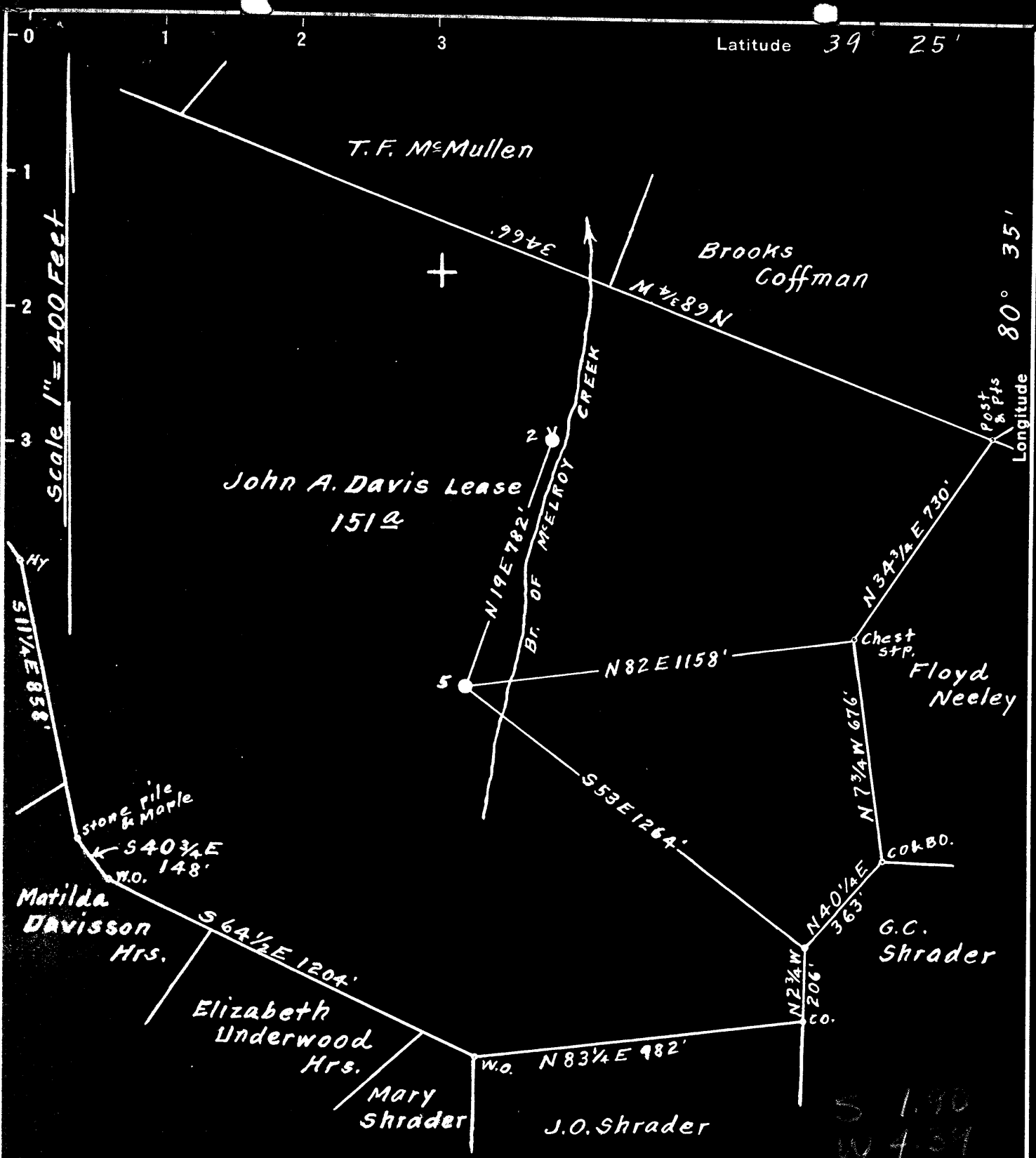


Latitude 39 25'

Longitude 80° 35'



Surface owned by T.F. McMullen,  
 Address: Mr. T.F. McMullen, Ashley, Doddridge County, W.Va.  
 Coal was owned by Ralph W. Brownfield, Uniontown, Pa.  
 and later sold to State of West Virginia for taxes, not redeemed.

- New Location
- Drill Deeper
- Abandonment

On 800' Map Sqs. 54-5 W 3.

Company Randall-Zogg Supply Co.  
 Address Owensboro, Ky.  
 Farm John A. Davis  
 Tract \_\_\_\_\_ Acres 151 Lease No. \_\_\_\_\_  
 Well (Farm) No. 5 Serial No. \_\_\_\_\_  
 Elevation (Spirit Level) Floor - 906.43  
 Ground - 905.43  
 Quadrangle Centerpoint  
 County Doddridge District McClellan  
 Engineer A. L. Headley  
 Engineer's Registration No. 2021  
 File No. \_\_\_\_\_ Drawing No. \_\_\_\_\_  
 Date July 20th, 1949 Scale 1" = 400 Feet

STATE OF WEST VIRGINIA  
 DEPARTMENT OF MINES  
 OIL AND GAS DIVISION  
 CHARLESTON

**WELL LOCATION MAP**  
 FILE NO. DOD-845-A

+ Denotes location of well on United States Topographic Maps, scale 1 to 62,500, latitude and longitude lines being represented by border lines as shown.

- Denotes one inch spaces on border line of original tracing.



STATE OF WEST VIRGINIA  
DEPARTMENT OF MINES  
OIL AND GAS DIVISION

72

Permit No. 001-845-A

WELL RECORD

Oil or Gas Well **OIL**  
(KIND)

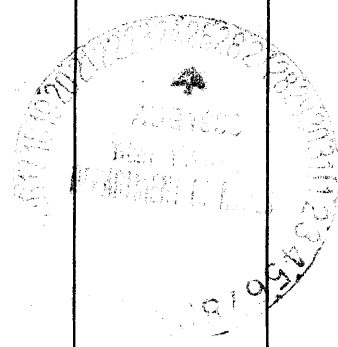
Company W. D. GRISBLE COMPANY  
Address BOX 338 WEST UNION, W. VA.  
Farm John A. Davis Acres 151  
Location (waters) Branch of McElroy Creek  
Well No. Five (5) Elev. 205.43  
District McClellan County Doddridge  
The surface of tract is owned in fee by I. F. McClellan,  
Address Ashley, W. Va.  
Mineral rights are owned by Coal sold to State of  
W. Va. for Taxes Address \_\_\_\_\_  
Drilling commenced \_\_\_\_\_  
Drilling completed \_\_\_\_\_  
Date Shot See Below From \_\_\_\_\_ To \_\_\_\_\_  
With \_\_\_\_\_  
Open Flow /10ths Water in \_\_\_\_\_ Inch  
/10ths Merc. in \_\_\_\_\_ Inch  
Volume \_\_\_\_\_ Cu. Ft.  
Rock Pressure \_\_\_\_\_ lbs. \_\_\_\_\_ hrs.  
Oil \_\_\_\_\_ bbls., 1st 24 hrs.  
Fresh water \_\_\_\_\_ feet \_\_\_\_\_ feet  
Salt water \_\_\_\_\_ feet \_\_\_\_\_ feet

Casing and Tubing	Used in Drilling	Left in Well	Packers
Size			Kind of Packer
16			
13			
10	<b>125'</b>		Size of
8 1/4	<b>1125'</b>		
6 1/2	<b>1908'</b>	<b>1908'</b>	Depth set
5 3/16			
3			Perf. top
2	<b>2074'</b>	<b>2074'</b>	Perf. bottom
Liners Used			Perf. top
			Perf. bottom

CASING CEMENTED \_\_\_\_\_ SIZE \_\_\_\_\_ No. Ft. \_\_\_\_\_ Dat \_\_\_\_\_

COAL WAS ENCOUNTERED AT **596** FEET **72** INCHES  
\_\_\_\_\_  
FEET INCHES FEET INCHES  
\_\_\_\_\_  
FEET INCHES FEET INCHES

Formation	Color	Hard or Soft	Top	Bottom	Oil, Gas or Water	Depth Found	Remarks
Pittsburgh Coal			<b>596'</b>	<b>608'</b>			
Big Injun Sand			<b>1942'</b>		Gas Gas Oil	<b>1953'</b> <b>2045'</b> <b>2050'</b>	
Total Depth				<b>2074'</b>			
<b>SHOT RECORD</b>							
	<b>DATE OF SHOT</b>		<b>NO. OF QTS.</b>	<b>TOP OF SHOT</b>			
	<b>5-20-08</b>		<b>20</b>	<b>2055'</b>			
	<b>10-27-08</b>		<b>30</b>	<b>2058'</b>			
	<b>4-26-12</b>		<b>40</b>	<b>2059'</b>			
	<b>5-22-23</b>		<b>50</b>	<b>2064'</b>			



(Over) JUN 24 1951

