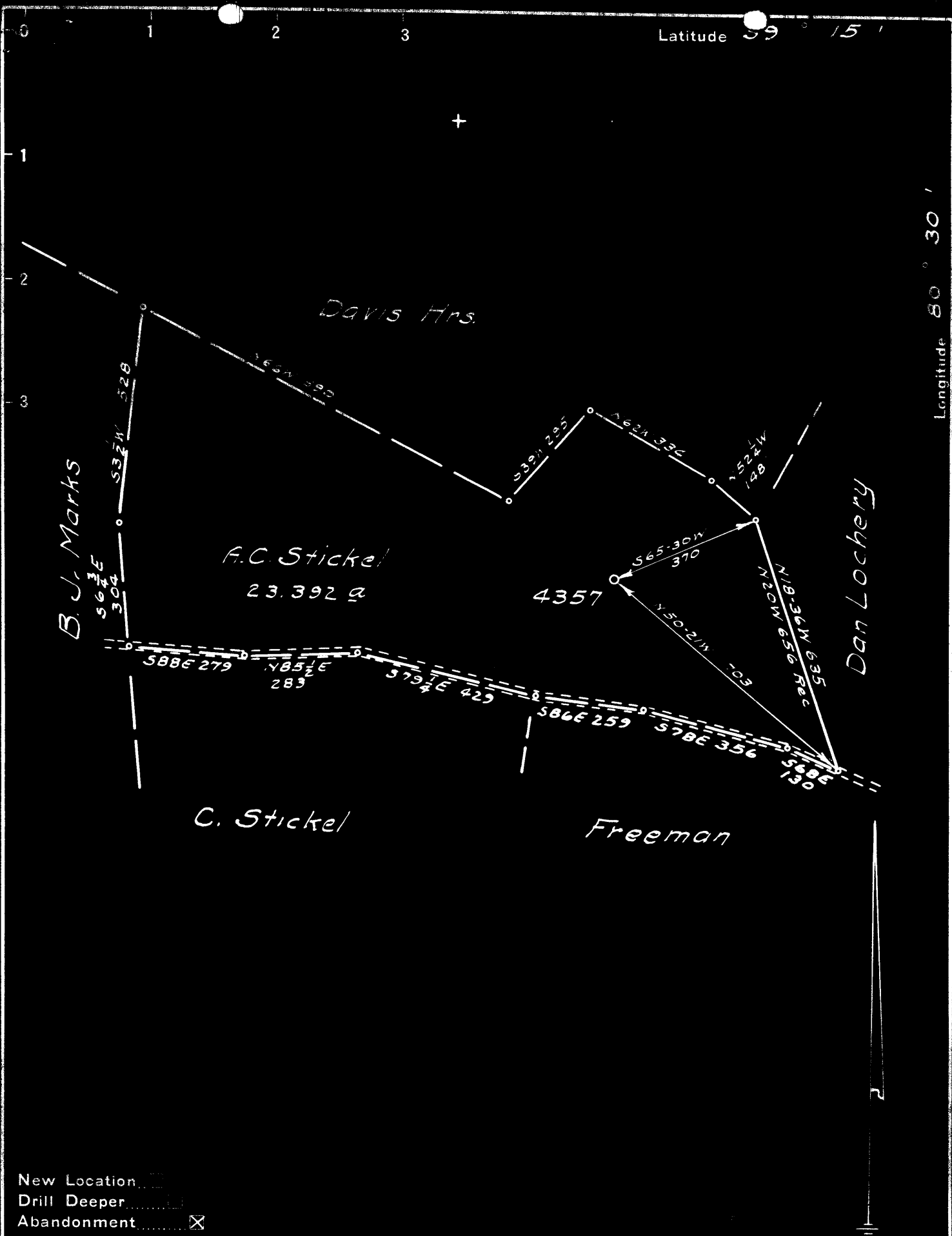


Latitude 39° 15'

Longitude 80° 30'



New Location
 Drill Deeper
 Abandonment

Company Pittsburgh & W.Va. Gas Co.
 Address Clarksburg W.Va.
 Farm A.C. Stickel
 Tract _____ Acres 23.392 Lease No. 7695
 Well (Farm) No. _____ Serial No. 4357
 Elevation (Spirit Level) 1069
 Quadrangle Vadis NE 12
 County Doddridge District Greenbrier
 Engineer James D. Jeffries
 Engineer's Registration No. 1084
 File No. D-32/31 Drawing No. _____
 Date 5-4-50 Scale 1" = 300'

STATE OF WEST VIRGINIA
 DEPARTMENT OF MINES
 OIL AND GAS DIVISION
 CHARLESTON

WELL LOCATION MAP
 FILE NO. DOD-824

+ Denotes location of well on United States Topographic Maps, scale 1 to 62,500, latitude and longitude lines being represented by border lines as shown.
 - Denotes one inch spaces on border line of original tracing.



761

STATE OF WEST VIRGINIA
DEPARTMENT OF MINES
OIL AND GAS DIVISION

WELL RECORD

Permit No. 874-A

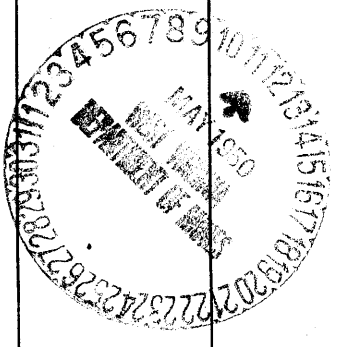
Oil or Gas Well GAS
(KIND)

Company Pittsburgh & West Va Gas Company.
Address Clarksburg, West Va.
Farm A. C. Stickle Acres 23
Location (waters) Vadon N/E. 1-2
Well No. 4397 Elev. 1069'
District Greenbrier County Doddridge
The surface of tract is owned in fee by Charles Stickle
Address Salon, West Va.
Mineral rights are owned by _____
Address _____
Drilling commenced June 3rd, 1915
Drilling completed July 16, 1915
Date Shot _____ From _____ To _____
With _____
Open Flow _____ /10ths Water in _____ Inch
_____ /10ths Merc. in _____ Inch
Volume _____ Cu. Ft.
Rock Pressure _____ lbs. _____ hrs.
Oil _____ bbls., 1st 24 hrs.
Fresh water _____ feet _____ feet
Salt water _____ feet _____ feet

Casing and Tubing	Used in Drilling	Left in Well	Packers
Size			Kind of Packer
16			
13			
10	<u>975'</u>	<u>975'</u>	Size of
8 3/4	<u>1173'</u>	<u>1173'</u>	
6 3/4	<u>2043'</u>	<u>2043'</u>	Depth set
5 3/16			
3			Perf. top
2			Perf. bottom
Liners Used			Perf. top
			Perf. bottom

CASING CEMENTED _____ SIZE _____ No. Ft. _____ Dat _____
COAL WAS ENCOUNTERED AT 105 FEET 36 INCHES
670 FEET 36 INCHES FEET INCHES
FEET INCHES FEET INCHES

Formation	Color	Hard or Soft	Top	Bottom	Oil, Gas or Water	Depth Found	Remarks
Clay	Red	Soft	0	15			
Bluff Sand	White	Hard	15	55			
Lime	"	"	55	105			
Native Coal	Black	"	105	108			
Slate	"	"	108	128			
Gritty Lime	Light	Hard	128	160			
Red Rock			160	210			
Lime	Light		210	270			
Slate	"	Soft	270	300			
Sand	"	Medium	300	335			
Slate	"	Soft	335	400			
Red Rock	Red	"	400	420			
Slate	White	Medium	420	480			
Lime	"	Hard	480	530			
Slate	"	Soft	530	540			
Sand	"	Hard	540	580			
Slate	Black	Soft	580	590			
Slate&shells			590	620			
Lime	White	Hard	620	670			
Pgh. Coal	Black	Open	670	673			
Slate	White	Medium	673	717			
Murphy Sand	"	"	717	764			
Slate&shells	Dark	H.&S.	764	776			
Red Rock	Red	Soft	776	795			
Lime	"	Hard	795	800			
Red Rock	"	Soft	800	880			
Lime	Light	Hard	880	900			
Slate	"	Medium	900	940			
Lime	"	Hard	940	980			
Slate	"	Soft	980	1015			
Little Dunkard	"	Hard	1015	1065			
Slate	"	Soft	1065	1113			
Big Dunkard	"	Hard	1113	1190			
Slate	"	Soft	1190	1278			
Gas Sand	Dark	Hard	1278	1300			
Slate	Light	Soft	1300	1308			
Lime	Gritty	Hard	1308	1350			
Slate&shells	Light	Hard&Soft	1350	1415			
let. Salt Sand	Black	Hard	1415	1440			



Formation	Color	Hard or Soft	Top	Bottom	Oil, Gas or Water	Depth Found	Remarks
Slaty	Black	Hard	140	150			
Red Salt Sand	...	Hard	150	160			
Slaty	...	Hard	160	170			
Slaty	...	Hard	170	180			
Red Salt Sand	Light	Hard	180	190			
Shale	Black	Hard	190	200			
Red Salt Sand	Light	Hard	200	210			
Shale	Black	Hard	210	220			
Red Salt Sand	Light	Hard	220	230			
Shale	Black	Hard	230	240			
Red Salt Sand	Light	Hard	240	250			
Shale	Black	Hard	250	260			
Red Salt Sand	Light	Hard	260	270			
Shale	Black	Hard	270	280			
Red Salt Sand	Light	Hard	280	290			
Shale	Black	Hard	290	300			
Red Salt Sand	Light	Hard	300	310			
Shale	Black	Hard	310	320			
Red Salt Sand	Light	Hard	320	330			
Shale	Black	Hard	330	340			
Red Salt Sand	Light	Hard	340	350			
Shale	Black	Hard	350	360			
Red Salt Sand	Light	Hard	360	370			
Shale	Black	Hard	370	380			
Red Salt Sand	Light	Hard	380	390			
Shale	Black	Hard	390	400			
Red Salt Sand	Light	Hard	400	410			
Shale	Black	Hard	410	420			
Red Salt Sand	Light	Hard	420	430			
Shale	Black	Hard	430	440			
Red Salt Sand	Light	Hard	440	450			
Shale	Black	Hard	450	460			
Red Salt Sand	Light	Hard	460	470			
Shale	Black	Hard	470	480			
Red Salt Sand	Light	Hard	480	490			
Shale	Black	Hard	490	500			
Red Salt Sand	Light	Hard	500	510			
Shale	Black	Hard	510	520			
Red Salt Sand	Light	Hard	520	530			
Shale	Black	Hard	530	540			
Red Salt Sand	Light	Hard	540	550			
Shale	Black	Hard	550	560			
Red Salt Sand	Light	Hard	560	570			
Shale	Black	Hard	570	580			
Red Salt Sand	Light	Hard	580	590			
Shale	Black	Hard	590	600			
Red Salt Sand	Light	Hard	600	610			
Shale	Black	Hard	610	620			
Red Salt Sand	Light	Hard	620	630			
Shale	Black	Hard	630	640			
Red Salt Sand	Light	Hard	640	650			
Shale	Black	Hard	650	660			
Red Salt Sand	Light	Hard	660	670			
Shale	Black	Hard	670	680			
Red Salt Sand	Light	Hard	680	690			
Shale	Black	Hard	690	700			
Red Salt Sand	Light	Hard	700	710			
Shale	Black	Hard	710	720			
Red Salt Sand	Light	Hard	720	730			
Shale	Black	Hard	730	740			
Red Salt Sand	Light	Hard	740	750			
Shale	Black	Hard	750	760			
Red Salt Sand	Light	Hard	760	770			
Shale	Black	Hard	770	780			
Red Salt Sand	Light	Hard	780	790			
Shale	Black	Hard	790	800			
Red Salt Sand	Light	Hard	800	810			
Shale	Black	Hard	810	820			
Red Salt Sand	Light	Hard	820	830			
Shale	Black	Hard	830	840			
Red Salt Sand	Light	Hard	840	850			
Shale	Black	Hard	850	860			
Red Salt Sand	Light	Hard	860	870			
Shale	Black	Hard	870	880			
Red Salt Sand	Light	Hard	880	890			
Shale	Black	Hard	890	900			
Red Salt Sand	Light	Hard	900	910			
Shale	Black	Hard	910	920			
Red Salt Sand	Light	Hard	920	930			
Shale	Black	Hard	930	940			
Red Salt Sand	Light	Hard	940	950			
Shale	Black	Hard	950	960			
Red Salt Sand	Light	Hard	960	970			
Shale	Black	Hard	970	980			
Red Salt Sand	Light	Hard	980	990			
Shale	Black	Hard	990	1000			

Oil
Gas

2760-2775
2780-2785

Date June 19th, 1949, 19

APPROVED FITZGERALD & WEST VA GAS COMPANY, Owner

By *W. M. West*
(Title)