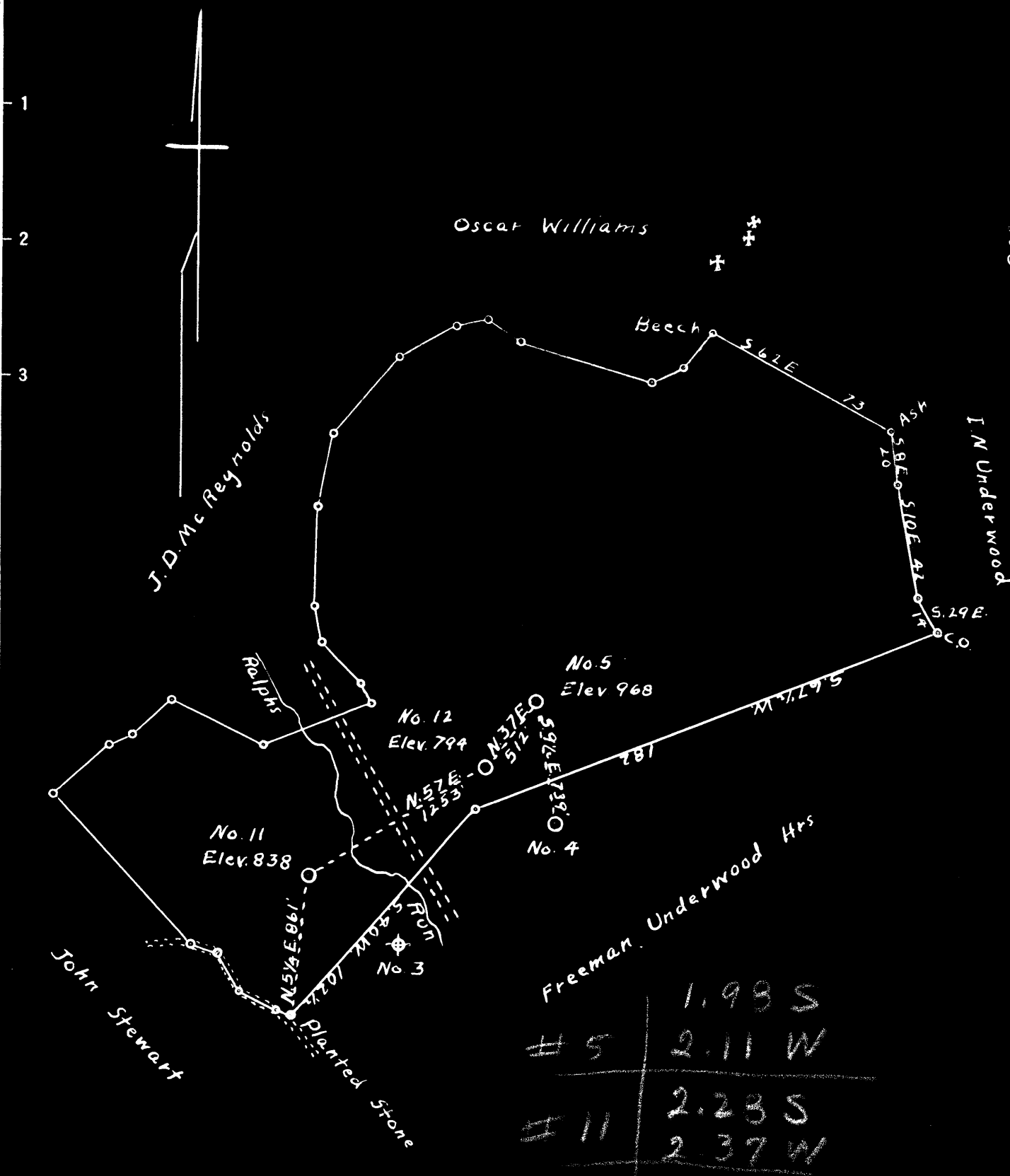


Latitude 39 25

Longitude 80 40'



# 5	1.98 S
# 11	2.11 W
# 12	2.23 S
	2.37 W
	2.10 S
	2.17 W

New Location  
 Drill Deeper  
 Abandonment X

Survey & Plat *A. K. Westfall*

Company *Broadwater, Welch & Travis*

Address *Pennsboro, W Va.*

Farm *Martha J. Smith*

Tract \_\_\_\_\_ Acres *22 2/3* Lease No. \_\_\_\_\_

Well (Farm) No. *5-11-12* Serial No. \_\_\_\_\_

Elevation (Spirit Level) *968-838-794*

Quadrangle *Centerpoint*

County *Doddridge* District *McClellan*

Engineer *R. F. ...*

Engineer's Registration No. *648*

File No. \_\_\_\_\_ Drawing No. \_\_\_\_\_

Date *Nov. 29, 1948* Scale *1" = 50 Poles*

STATE OF WEST VIRGINIA  
 DEPARTMENT OF MINES  
 OIL AND GAS DIVISION  
 CHARLESTON

WELL LOCATION MAP

FILE NO. *DOD-716-A-#5*  
*DOD-717-A-#11*  
*DOD-718-A-#12*

+ Denotes location of well on United States Topographic Maps, scale 1 to 62,500, latitude and longitude lines being represented by border lines as shown.

- Denotes one inch spaces on border line of original tracing.



STATE OF WEST VIRGINIA  
DEPARTMENT OF MINES  
OIL AND GAS DIVISION

621

WELL RECORD

Permit No. 718-A

Oil or Gas Well Oil  
(KIND)

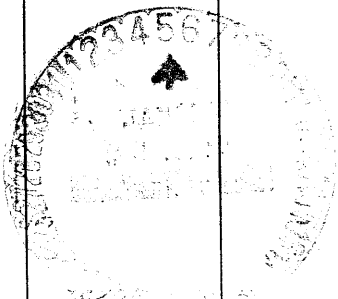
Company Broadwater, Welch, & Travis  
Address West Union, or Pennsboro, W. Va.  
Farm Martha J Smith Acres 222-1/2  
Location (waters) Ralphs Run  
Well No. 12 Elev. 794  
District McClellan County Dodd  
The surface of tract is owned in fee by Martha J. Smith  
West Union, W. Va. Address  
Mineral rights are owned by Martha J. Smith  
West Union, W. Va. Address  
Drilling commenced no record  
Drilling completed " "  
Date Shot 6-19-40 From 2659 To  
With 35 qts  
Open Flow /10ths Water in no record Inch  
/10ths Merc. in " " Inch  
Volume " " Cu. Ft.  
Rock Pressure lbs. " " hrs.  
Oil bbls., 1st 24 hrs.  
Fresh water feet feet  
Salt water feet feet

Casing and Tubing	Used in Drilling	Left in Well	Packers
Size			Kind of Packer
16			
13			
10	262	pulled	Size of
8 3/4	1141	#	Depth set
6 5/8	1884	1884	
5 3/16	2612	2612	
3			Perf. top
2	2673	2673	Perf. bottom
Liners Used			Perf. top
			Perf. bottom

CASING CEMENTED \_\_\_\_\_ SIZE \_\_\_\_\_ No. Ft. \_\_\_\_\_ Date \_\_\_\_\_

COAL WAS ENCOUNTERED AT 558 FEET \_\_\_\_\_ INCHES  
\_\_\_\_\_ FEET \_\_\_\_\_ INCHES FEET \_\_\_\_\_ INCHES  
\_\_\_\_\_ FEET \_\_\_\_\_ INCHES FEET \_\_\_\_\_ INCHES

Formation	Color	Hard or Soft	Top	Bottom	Oil, Gas or Water	Depth Found	Remarks
<u>Coal</u>			<u>558</u>				
Big Lime			1875	1915			
Big Ingun			1915	2090			
oil & Gas			2005				
Gordon Stray			2610	2651			
Gas			2645				
Gordon			2660	2665			
Total Depth			2677				



Formation	Color	Hard or Soft	Top	Bottom	Oil, Gas or Water	Depth Found	Remarks

Date **January, 3, 1949.** \_\_\_\_\_, 19\_\_\_\_\_

APPROVED **Broadwater, Welch, & Travis** \_\_\_\_\_, Owner

By **C. O. Travis, partner** \_\_\_\_\_  
(Title)



McClellan District, Doddridge County, W. Va.  
 By Broadwater, Welch & Travis, West Union, W. Va., or Pennsboro, W. Va.  
 Abandoned under permit Dod-.....-A?  
 On 222½ acres, on Ralphs Run.  
 Elevation, 794' L.  
 Surface and minerals owned by Martha J. Smith, West Union, W. Va.  
 Shot June 19, 1940, at 2659', with 35 ots.  
 10" casing, 262' (pulled); 8¼", 1141' (pulled); 6⅝", 1884'; 5⅝", 2612';  
 2" tubing, 2673'.  
 Coal was encountered at 558'.  
 Oil well. Abandonment reported to Dept. of Mines Jan. 3, 1949.  
 Record to RCT from Mrs. Griffith July 10, 1949. Old File No. 621.

	Top.	Bottom.
Coal	558	- ...
Big Lime	1875	- 1915
Big Injun Sand (oil and gas, 2005')	1915	- 2090
Gordon Stray Sand (gas, 2645')	2610	- 2651
Gordon Sand	2660	- 2665
Total depth		2677