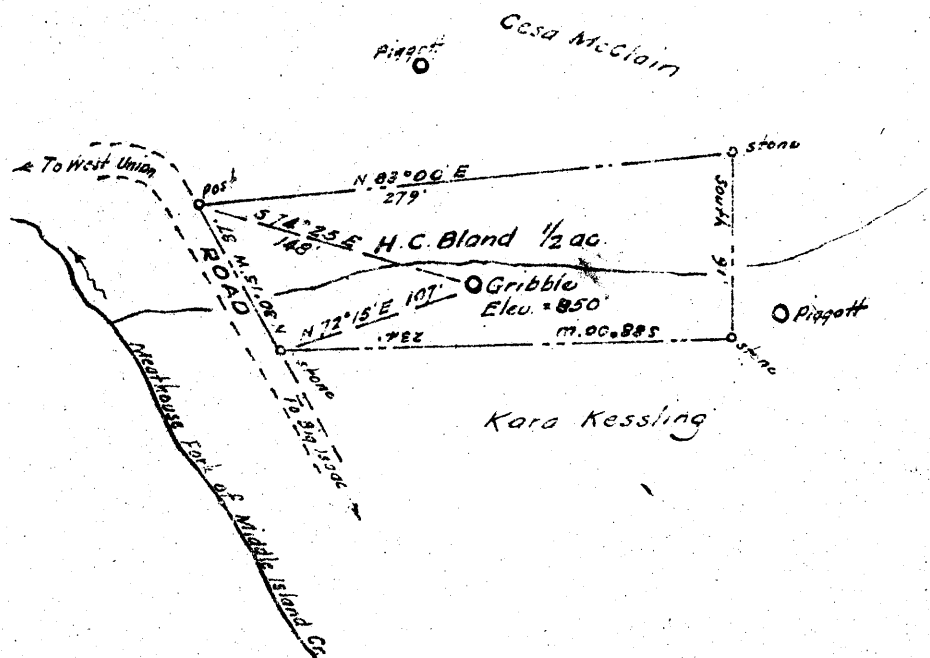


+ 1.105  
0.83W



New Location   
 Drill Deeper   
 Abandonment

NOTE:- Lot in village of New Milton

Company W. D. GRIBBLE  
 Address West Union, W. Va.  
 Farm H.C. Bland Lot  
 Tract \_\_\_\_\_ Acres 0.50 Lease No. \_\_\_\_\_  
 Well (Farm) No. 0710 Serial No. \_\_\_\_\_  
 Elevation (Spirit Level) 850  
 Quadrangle Vadis  
 County Doddridge District New Milton  
 Engineer W.D. Gribble  
 Engineer's Registration No. 1227  
 File No. \_\_\_\_\_ Drawing No. \_\_\_\_\_  
 Date July 1948 Scale 1" = 100'

STATE OF WEST VIRGINIA  
 DEPARTMENT OF MINES  
 OIL AND GAS DIVISION  
 CHARLESTON

WELL LOCATION MAP  
 FILE NO. DOD-680-A

+ Denotes location of well on United States Topographic Maps, scale 1 to 62,500, latitude and longitude lines being represented by border lines as shown.

- Denotes one inch spaces on border line of original tracing.



STATE OF WEST VIRGINIA  
DEPARTMENT OF MINES  
OIL AND GAS DIVISION

55+

WELL RECORD

Permit No. 607 H. C. Bland Oil or Gas Well Oil (KIND)

Company Drilled By Carter Oil Company  
Address Sold to Hope Construction & Refin Co  
Farm H. C. Bland Acres 1/2  
Location (waters) Meat Hous Fork  
Well No. 1 Elev. 850  
District New Milton County Doddridge  
The surface of tract is owned in fee by H. C. Bland  
Address \_\_\_\_\_  
Mineral rights are owned by H. C. Bland  
Address \_\_\_\_\_

Casing and Tubing	Used in Drilling	Left in Well	Packers
Size			Kind of Packer
16			
13			
10	310	0	Size of
8 1/4	1000	0	
6 5/8	1805	1805	Depth set
5 3/16			
3			Perf. top
2			Perf. bottom
Liners Used			Perf. top
			Perf. bottom

Drilling commenced 10/22/1920  
Drilling completed 11/29/1920  
Date Shot 1/1/1921 From 1904 To 1925  
With 25 Qts  
Open Flow /10ths Water in \_\_\_\_\_ Inch  
/10ths Merc. in \_\_\_\_\_ Inch  
Volume \_\_\_\_\_ Cu. Ft.  
Rock Pressure \_\_\_\_\_ lbs. \_\_\_\_\_ hrs.  
Oil 2-BBL bbls., 1st 24 hrs.  
Fresh water \_\_\_\_\_ feet \_\_\_\_\_ feet  
Salt water \_\_\_\_\_ feet \_\_\_\_\_ feet

CASING CEMENTED \_\_\_\_\_ SIZE \_\_\_\_\_ No. Ft. \_\_\_\_\_ Date \_\_\_\_\_  
COAL WAS ENCOUNTERED AT \_\_\_\_\_ FEET \_\_\_\_\_ INCHES  
\_\_\_\_\_ FEET \_\_\_\_\_ INCHES FEET \_\_\_\_\_ INCHES  
\_\_\_\_\_ FEET \_\_\_\_\_ INCHES FEET \_\_\_\_\_ INCHES

Formation	Color	Hard or Soft	Top	Bottom	Oil, Gas or Water	Depth Found	Remarks
Pittsburgh Coal			465	475			
1st Cow Run			940	960			
2 Cow Run			1040	1080			
1 Salt Sand			1235	1285			
2nd Salt Sand			1310	1380			
3rd " "			1400	1458			
Marion			1670	1683			
Little Lime			1766	1780			
Pencil Cave			1780	1792			
Big Lime			1850	1880			
Big Injun			1880	1938	Oil	1905	
Total Depth				1938			

