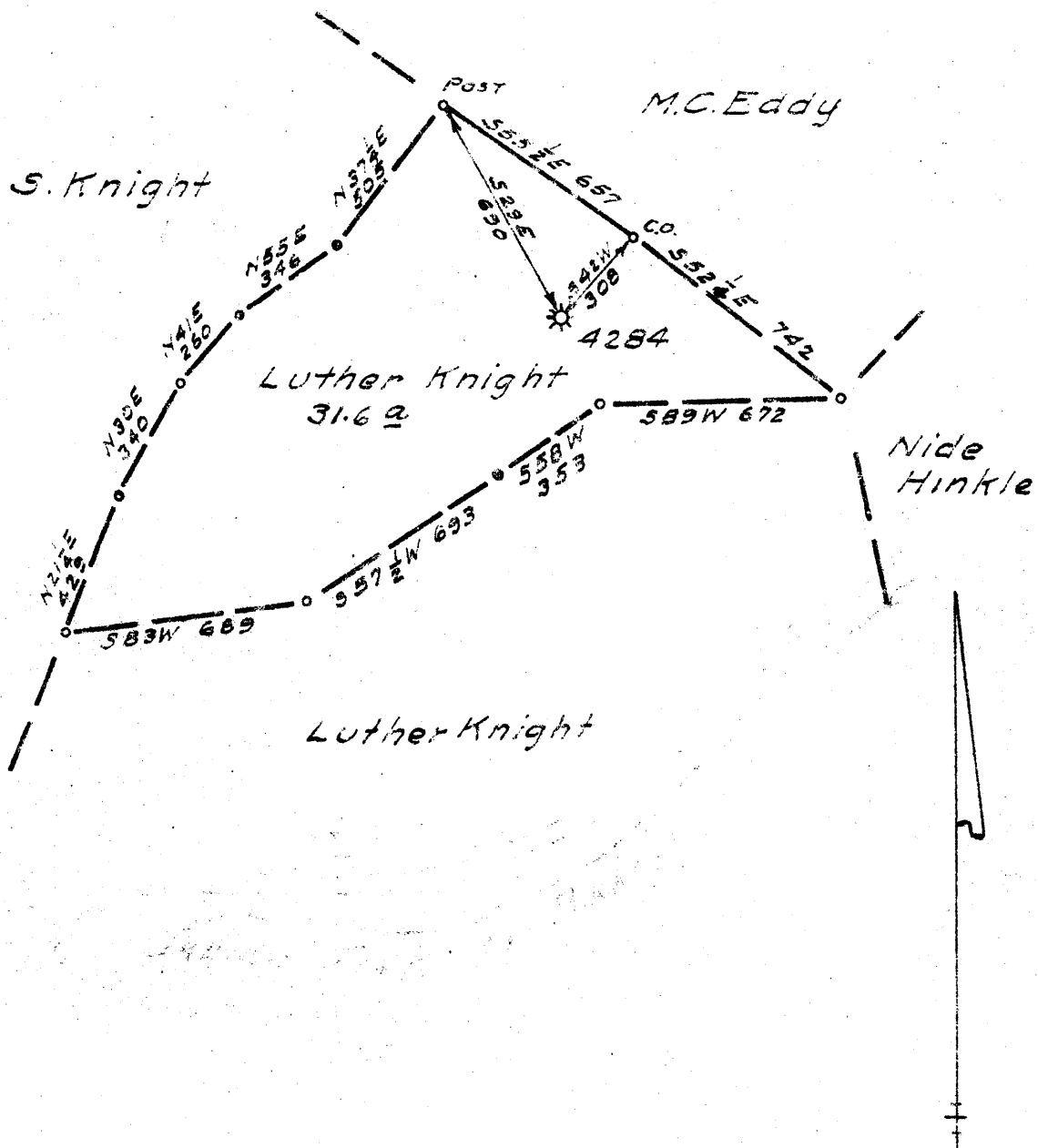


2.045  
0.12W



New Location   
 Drill Deeper   
 Abandonment

Company Pittsburgh & W. Va. Gas Co.  
 Address Clarksburg W. Va.  
 Farm Luther Knight  
 Tract \_\_\_\_\_ Acres 31.6 Lease No. 7600  
 Well (Farm) No. 1 Serial No. 4284  
 Elevation (Spirit Level) 1356 VA  
 Quadrangle Vadis N.E. 1/4  
 County Doddridge District Greenbrier  
 Engineer Jameal Gaffner  
 Engineer's Registration No. 1084  
 File No. 157/77 Drawing No. \_\_\_\_\_  
 Date 5-20-48 Scale 1"=500'

STATE OF WEST VIRGINIA  
 DEPARTMENT OF MINES  
 OIL AND GAS DIVISION  
 CHARLESTON

WELL LOCATION MAP  
 FILE NO. DOD-666-A

+ Denotes location of well on United States Topographic Maps, scale 1 to 62,500, latitude and longitude lines being represented by border lines as shown.

- Denotes one inch spaces on border line of original tracing.



263

STATE OF WEST VIRGINIA DEPARTMENT OF MINES OIL AND GAS DIVISION

WELL RECORD

Permit No. 666-A

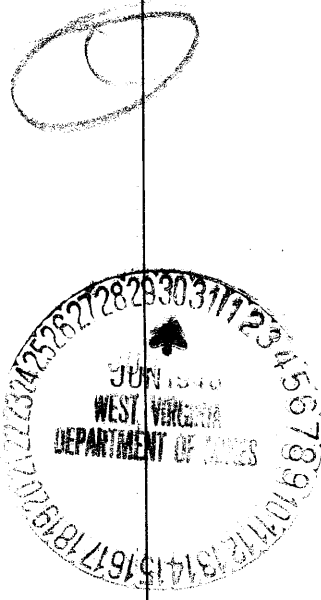
Oil or Gas Well "GAS" (KIND)

Company: Pittsburgh & West Va. Gas Company. Address: Clarksburg, West Va., Farm: Luther Knight, Acres: 31. Location: Vadis N/E. 1-4. Well No. 1228, Elev. 1956'. District: Greenbrier, County: Doddridge. The surface of tract is owned in fee by R.D. #3, John M. Casey, Salem, W. Va. Mineral rights are owned by Luther Knight et al., Salem, W. Va. Drilling commenced June 2nd, 1914, completed July 21st, 1914.

Table with columns: Casing and Tubing, Used in Drilling, Left in Well, Packers. Rows include sizes 16, 18, 10, 8 1/4, 6 5/8, 5 3/16, 3, 2 and packer types like Anchor, 6-5/8" X 5-3/16", etc.

CASING CEMENTED SIZE No. Ft. Date. COAL WAS ENCOUNTERED AT 324 FEET 12 INCHES. 947 FEET 36 INCHES.

Main geological log table with columns: Formation, Color, Hard or Soft, Top, Bottom, Oil, Gas or Water, Depth Found, Remarks. Lists various rock layers like Red Rock Shells, Sand, Limestone, Slate, and Coal with their respective depths.



Formation	Color	Hard or Soft	Top	Bottom	Oil, Gas or Water	Depth Found	Remarks
Slate	Dark	Soft	1808	1816			
2nd. Salt Sand	White	Hard	1816	2065			
Slate&Shells	Dark	Soft&Hard	2065	2165			
Red Rock	Red	Soft&Hard	2165	2260			
Line	Dark	Hard	2260	2300			
Little Line	"	"	2300	2308			
Pencil Cave	Light	Soft	2308	2310			
Big Line	Dark	Hard	2310	2357			
Big Injen	"	"	2357	2455			
Slate&Shells	"	Hard&Soft	2455	2532			
Brown Grit	"	" "	2532	2587			
Slate	"	Soft&Hard	2587	2730			
Coars Sand	"	Hard	2730	2745			
Slate	"	Medium	2745	2925			
50 Ft. Sand	Light	Hard	2925	2950	Gas	2920'	
Slate	Dark	Soft	2950	2993			
30 Ft. Sand	"	Hard	2993	3017	Gas	3011'	
Slate	Dark	Soft	3017	3038			
Sand	"	Hard	3038	3051	Gas	3042'	
Slate&Shells	"	Soft	3051	3070			
Garden Sand	Light	Soft	3070	3076			
Slate	Dark	"	3076	3112			
4th. Sand	Light	Hard	3112	3120			
Slate&Shells	Dark	Hard&Soft	3120	3250			
Total Depth				3250			

August 12th, 1947

Date \_\_\_\_\_, 19\_\_\_\_

PITTSBURGH & WEST VA GAS COMPANY.

APPROVED

Owner

By W. M. Masten  
(Title)