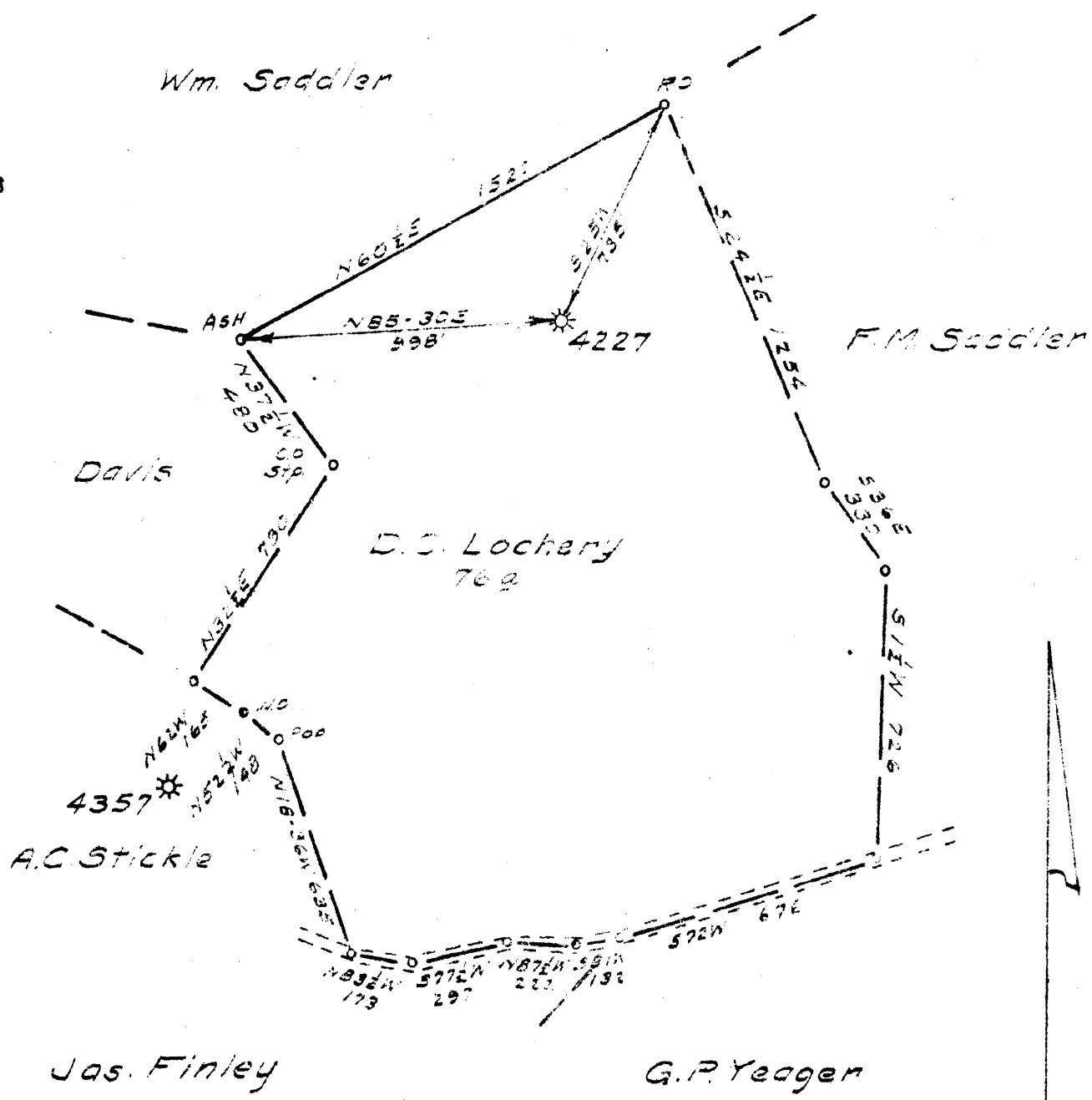


+ 0.59 S  
3.56 W

Longitude 80° 30'



New Location  
Drill Deeper  
Abandonment X

Company Pittsburgh & W. Va. Gas Co.  
 Address Clarksburg, W. Va.  
 Farm D. C. Louchery  
 Tract \_\_\_\_\_ Acres 76 Lease No 13577  
 Well (Farm) No. 1 Serial No. 4227  
 Elevation (Spirit Level) 1181 V.A.  
 Quadrangle Vadis N.E. 13  
 County Doddridge District Greenbrier  
 Engineer James J. Jeffries  
 Engineer's Registration No. 1084  
 File No. 157/75 Drawing No. \_\_\_\_\_  
 Date 5-20-48 Scale 1"=500'

STATE OF WEST VIRGINIA  
 DEPARTMENT OF MINES  
 OIL AND GAS DIVISION  
 CHARLESTON

WELL LOCATION MAP  
 FILE NO. DOD-658-A

+ Denotes location of well on United States Topographic Maps, scale 1 to 62,500, latitude and longitude lines being represented by border lines as shown.  
 - Denotes one inch spaces on border line of original tracing



525

STATE OF WEST VIRGINIA  
DEPARTMENT OF MINES  
OIL AND GAS DIVISION

WELL RECORD

"GAS"

Permit No. 458-A

Oil or Gas Well (KIND)

Company Pittsburgh & West Va Gas Company.  
Address Clarksburg, West Va.  
Farm D. C. Lousbery Acres 76  
Location (waters) Vadla N/E. 1-2  
Well No. 4227 Elev. 1181' VA  
District Greenbrier County Doddridge  
The surface of tract is owned in fee by S. W. Davis  
R.D.#3 Address Salem, W. Va.  
Mineral rights are owned by Chas. W. Lousbery et al.  
Address Clarksburg, W. Va.

Drilling commenced December 1st, 1913  
Drilling completed February 14th, 1914  
Date Shot From To  
With

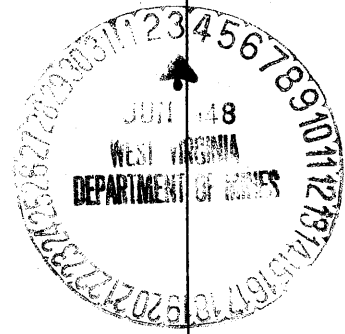
Open Flow /10ths Water in Inch  
/10ths Merc. in Inch  
Volume Cu. Ft.  
Rock Pressure lbs. hrs.  
Oil bbls., 1st 24 hrs.  
Fresh water feet feet  
Salt water feet feet

| Casing and Tubing | Used in Drilling | Left in Well | Packers        |
|-------------------|------------------|--------------|----------------|
| Size              |                  |              | Kind of Packer |
| 16                |                  |              |                |
| 13                |                  |              |                |
| 10                | 267'             | None         | Size of        |
| 8 1/4             | 1272'            | None         |                |
| 6 5/8             | 2142'            | 2142'        | Depth set      |
| 5 3/16            |                  |              |                |
| 3                 |                  |              | Perf. top      |
| 2                 |                  |              | Perf. bottom   |
| Liners Used       |                  |              | Perf. top      |
|                   |                  |              | Perf. bottom   |

CASING CEMENTED SIZE No. Ft. Date  
COAL WAS ENCOUNTERED AT 225 FEET 48 INCHES  
782 FEET 72 INCHES FEET INCHES  
FEET INCHES FEET INCHES

| Formation      | Color | Hard or Soft | Top  | Bottom | Oil, Gas or Water | Depth Found | Remarks |
|----------------|-------|--------------|------|--------|-------------------|-------------|---------|
| Clay           | Red   | Soft         | 0    | 50     |                   |             |         |
| Line stone     | White | Hard         | 50   | 70     |                   |             |         |
| Slate          | "     | Soft         | 70   | 125    |                   |             |         |
| Red Rock       | Red   | "            | 125  | 204    |                   |             |         |
| Line           | White | Hard         | 204  | 225    |                   |             |         |
| Coal           |       | Soft         | 225  | 229    |                   |             |         |
| Slate          | White | "            | 229  | 262    |                   |             |         |
| Sand           | "     | "            | 262  | 283    |                   |             |         |
| Red Rock       |       | "            | 283  | 362    |                   |             |         |
| Sand           | White | "            | 362  | 374    |                   |             |         |
| Slate          | Black | "            | 374  | 416    |                   |             |         |
| Line           | White | Hard         | 416  | 448    |                   |             |         |
| Sand           | "     | "            | 448  | 470    |                   |             |         |
| Red Rock       |       | Soft         | 470  | 560    |                   |             |         |
| Line           | White | Hard         | 560  | 586    |                   |             |         |
| Slate          | "     | Soft         | 586  | 652    |                   |             |         |
| Red Rock       |       | "            | 652  | 714    |                   |             |         |
| Line           | Blue  | Hard         | 714  | 782    |                   |             |         |
| Pgh. Coal      |       |              | 782  | 788    |                   |             |         |
| Slate          | White | Soft         | 788  | 797    |                   |             |         |
| Line           | "     | Hard         | 797  | 824    |                   |             |         |
| Sand           | "     | Soft         | 824  | 839    |                   |             |         |
| Slate          | Black | "            | 839  | 900    |                   |             |         |
| Line           | White | Hard         | 900  | 1012   |                   |             |         |
| Slate          | Black | Soft         | 1012 | 1088   |                   |             |         |
| Line           | White | Hard         | 1088 | 1125   |                   |             |         |
| Slate          | Black | Soft         | 1125 | 1200   |                   |             |         |
| Line           | White | Hard         | 1200 | 1260   |                   |             |         |
| Big Dunkard    |       |              | 1260 | 1282   |                   |             |         |
| Slate          | Black | Soft         | 1282 | 1337   |                   |             |         |
| Gas Sand       |       |              | 1337 | 1367   |                   |             |         |
| Slate          | Black | Soft         | 1367 | 1410   |                   |             |         |
| 1st. Salt Sand |       | Hard         | 1410 | 1435   |                   |             |         |
| Slate          | Black | Soft         | 1435 | 1512   |                   |             |         |
| 2nd. Salt Sand |       | Hard         | 1512 | 1540   |                   |             |         |
| Slate          | White | Soft         | 1540 | 1615   |                   |             |         |
| 3rd. Salt Sand |       | Hard         | 1615 | 1640   |                   |             |         |
| Slate          | Black | Soft         | 1640 | 1670   |                   |             |         |
| Sand           |       | Hard         | 1670 | 1712   |                   |             |         |

9



| Formation        | Color | Hard or Soft | Top  | Bottom | Oil, Gas or Water | Depth Found | Remarks |
|------------------|-------|--------------|------|--------|-------------------|-------------|---------|
| Slate            | Black | Soft         | 1714 | 1744   |                   |             |         |
| Sand             | White | Hard         | 1744 | 1817   |                   |             |         |
| Slate            | "     | Soft         | 1817 | 1886   |                   |             |         |
| Lime             | "     | Hard         | 1886 | 1960   |                   |             |         |
| Maroon Sand      | "     | "            | 1960 | 2002   |                   |             |         |
| Red Rock         |       | Soft         | 2002 | 2042   |                   |             |         |
| Little Lime      | White | Hard         | 2042 | 2054   |                   |             |         |
| Slate            | "     | Soft         | 2054 | 2072   |                   |             |         |
| Pencil Cave      | Dark  | "            | 2072 | 2077   |                   |             |         |
| Big Lime         | White | Hard         | 2077 | 2185   |                   |             |         |
| Big Injun        | "     | "            | 2185 | 2260   |                   |             |         |
| Slate            | "     | Soft         | 2260 | 2265   |                   |             |         |
| Squaw Sand       | "     | Hard         | 2265 | 2290   |                   |             |         |
| Slate            | "     | Soft         | 2290 | 2330   |                   |             |         |
| Sand             | "     | Hard         | 2330 | 2450   |                   |             |         |
| Slate            | "     | Soft         | 2450 | 2550   |                   |             |         |
| Sand             | "     | Hard         | 2550 | 2570   |                   |             |         |
| Lime             | "     | "            | 2570 | 2610   |                   |             |         |
| Slate            | "     | Soft         | 2610 | 2635   |                   |             |         |
| Lime             | "     | Hard         | 2635 | 2650   |                   |             |         |
| Slate            | "     | Soft         | 2650 | 2670   |                   |             |         |
| Sand             | "     | Hard         | 2670 | 2678   |                   |             |         |
| Slate            | "     | Soft         | 2678 | 2750   |                   |             |         |
| 30 Ft. Sand      | "     | Hard         | 2750 | 2786   | Gas               | 2759'       |         |
| Slate            | "     | Soft         | 2786 | 2835   |                   |             |         |
| Gordon Sand      | "     | Hard         | 2835 | 2860   | Gas               | 2838'       |         |
| Slate            | "     | Soft         | 2860 | 2880   | Gas               | 2855'       |         |
| 4th. Sand        | Gray  | Hard         | 2880 | 2901   | Gas               | 2882-2888'  |         |
| Total Depth..... |       |              |      | 2901   |                   |             |         |

December 11, 1947

Date \_\_\_\_\_, 19\_\_

PITTSBURGH & WEST VA GAS COMPANY.

APPROVED \_\_\_\_\_

Owner

By \_\_\_\_\_

(Title)