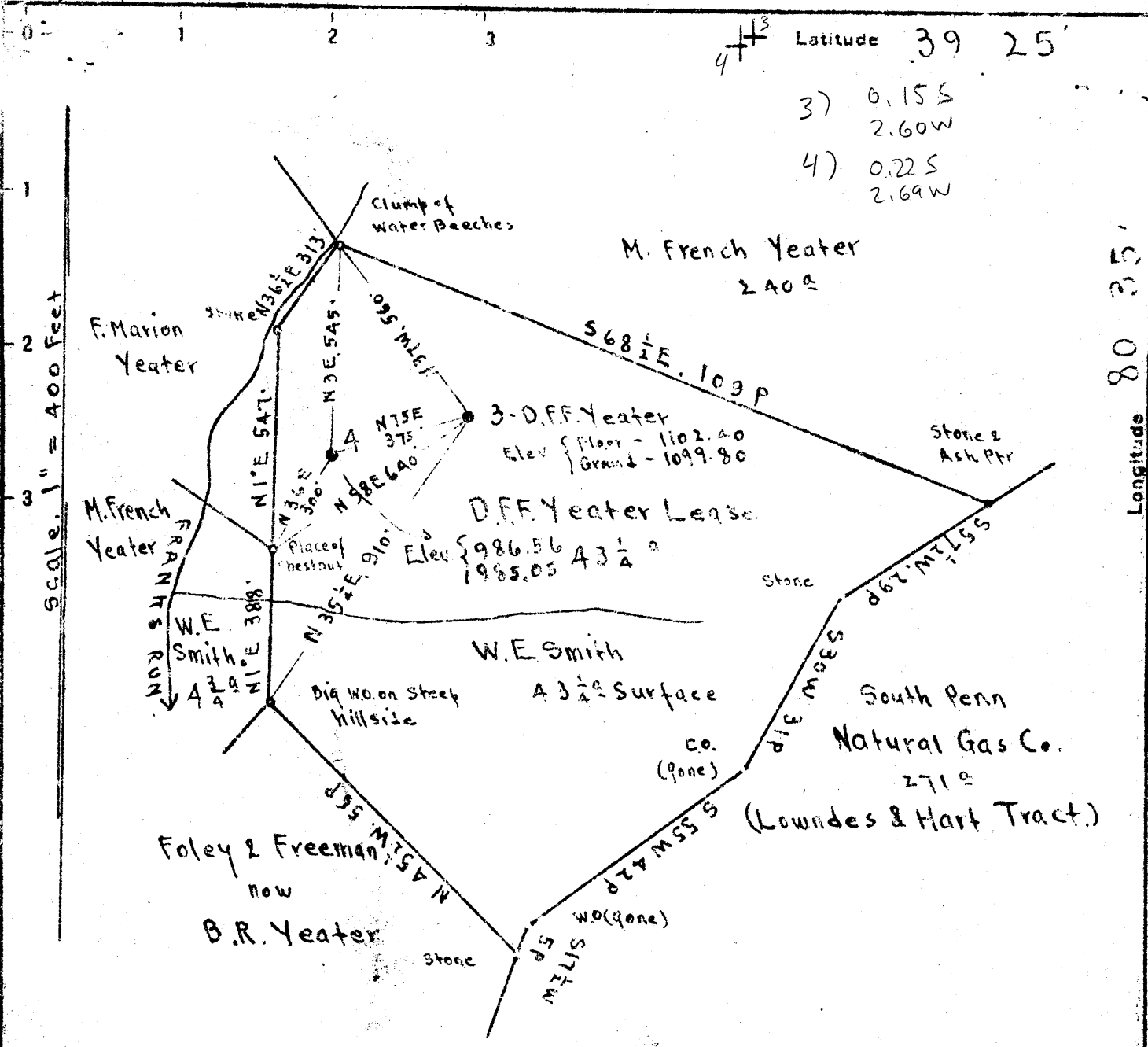


Latitude 39 25'

3) 0.15 S  
2.60 W

4) 0.22 S  
2.69 W



Surface: Walter E. Smith; Star Route, Smithfield, Wetzel Co. W.Va.  
Coal - State of West Virginia.

New Location   
Drill Deeper   
Abandonment

On 800' map # N 48

S 3 W 1

Company Cassady and Mackey  
Address Star Route West Union, W.Va  
Farm D.F.F. Yeater  
Tract \_\_\_\_\_ Acres 43 1/2 Lease No. \_\_\_\_\_  
Well (Farm) No. 3 and 4 Serial No. \_\_\_\_\_  
Elevation (Spirit Level) See above at wells  
Quadrangle CENTER POINT  
County Doddridge District McClellan  
Engineer E.C. Tabler  
Engineer's Registration No. \_\_\_\_\_  
File No. \_\_\_\_\_ Drawing No. \_\_\_\_\_  
Date March 18<sup>th</sup>, 1948 Scale 1" = 400 Feet

STATE OF WEST VIRGINIA  
DEPARTMENT OF MINES  
OIL AND GAS DIVISION  
CHARLESTON

WELL LOCATION MAP

FILE NO. DOD-651-A-#3  
DOD-652-A-#4

+ Denotes location of well on United States Topographic Maps, scale 1 to 62,500, latitude and longitude lines being represented by border lines as shown.

- Denotes one inch spaces on border line of original tracing.



STATE OF WEST VIRGINIA  
DEPARTMENT OF MINES  
OIL AND GAS DIVISION

548

AP 651-A

WELL RECORD

Permit No. \_\_\_\_\_

Oil or Gas Well Oil

(KIND)

Company Leroy Cassady  
Address West Union, W. Va.  
Farm D.F.P. Yeater Acres 42-1/4  
Location (waters) Franks Run  
Well No. 3 Elev. 1099.  
District McClellan County Doddridge  
The surface of tract is owned in fee by Walter E. Smith  
Smithfield W. Va. Address Star Rt.  
Mineral rights are owned by State of W. Va.  
Address \_\_\_\_\_

Casing and Tubing	Used in Drilling	Left in Well	Packers
Size			Kind of Packer
16			
13			
10			Size of
8 1/4			
6 3/8		<u>2165</u>	Depth set
5 3/16		<u>98'</u>	
3			Perf. top
2			Perf. bottom
Liners Used			Perf. top
			Perf. bottom

Drilling commenced \_\_\_\_\_  
Drilling completed \_\_\_\_\_  
Date Shot 4-2-96 From 2255 To \_\_\_\_\_  
With 16 Quarts  
Open Flow /10ths Water in \_\_\_\_\_ Inch  
/10ths Merc. in \_\_\_\_\_ Inch  
Volume \_\_\_\_\_ Cu. Ft.  
Rock Pressure \_\_\_\_\_ lbs. \_\_\_\_\_ hrs.  
Oil \_\_\_\_\_ bbls., 1st 24 hrs.  
Fresh water \_\_\_\_\_ feet \_\_\_\_\_ feet  
Salt water \_\_\_\_\_ feet \_\_\_\_\_ feet

CASING CEMENTED \_\_\_\_\_ SIZE \_\_\_\_\_ No. Ft. \_\_\_\_\_ Date \_\_\_\_\_  
COAL WAS ENCOUNTERED AT 805 FEET \_\_\_\_\_ INCHES  
\_\_\_\_\_ FEET \_\_\_\_\_ INCHES FEET \_\_\_\_\_ INCHES  
\_\_\_\_\_ FEET \_\_\_\_\_ INCHES FEET \_\_\_\_\_ INCHES

Formation	Color	Hard or Soft	Top	Bottom	Oil, Gas or Water	Depth Found	Remarks
<u>Pittsbrg/Coal</u>			<u>, 805</u>				
<u>Big Injun</u>			<u>2165</u>		<u>Gas 2180</u> <u>Oil 2258</u>		
<u>Total Depth</u>						<u>2275</u>	

