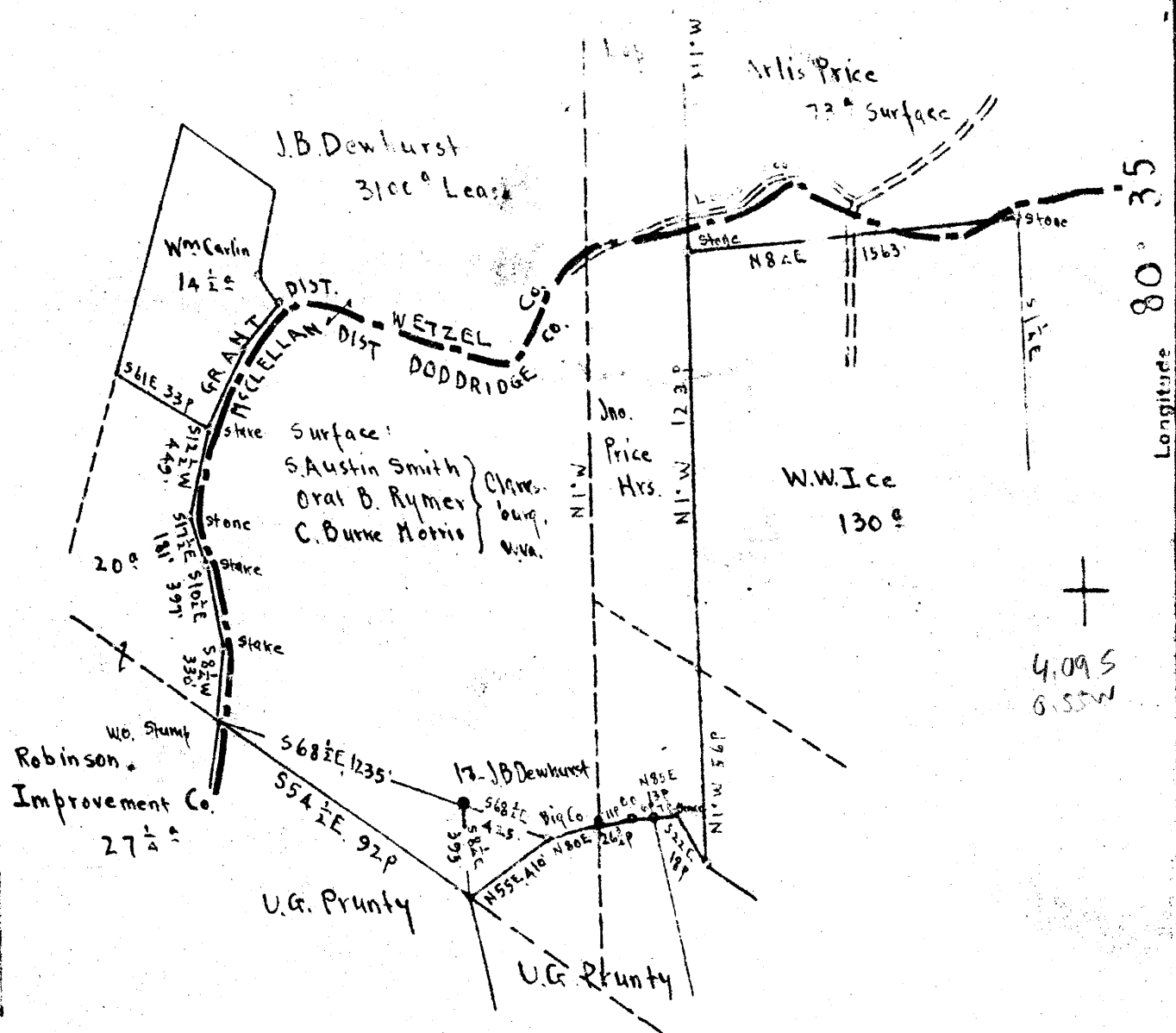


Latitude 39 30

Longitude 80 35

Scale 1" = 800 Feet



Surface : Smith, Rymer, & Morris . Address, S. Austin Smith, Clarksburg, W. Va.  
 Coal : S. Austin Smith & State of West Virginia .

New Location   
 Drill Deeper   
 Abandonment

Map N48 S1 E2

STATE OF WEST VIRGINIA  
 DEPARTMENT OF MINES  
 OIL AND GAS DIVISION  
 CHARLESTON

WELL LOCATION MAP  
 FILE NO. DOD-636-A

✦ Denotes location of well on United States Topographic Maps, scale 1 to 62,500, latitude and longitude lines being represented by border lines as shown.

— Denotes one inch space on border line of original tracing

Company Otis Eastern Service Inc  
 Address Bolivar New York  
 Farm J.B. Dewhurst  
 Tract Acres 3100 A Lease No.  
 Well (Farm) No. 17 Serial No. \_\_\_\_\_  
 Elevation (Spirit Level) Floor 1233.33  
 Ground 1279.23  
 Quadrangle CENTERPOINT  
 County Doddridge District McClellan  
 Engineer E.C. Tabler  
 Engineer's Registration No. \_\_\_\_\_  
 File No. \_\_\_\_\_ Drawing No. \_\_\_\_\_  
 Date Sept. 17<sup>th</sup> 1947 Scale 1" = 800 Feet



523

STATE OF WEST VIRGINIA  
DEPARTMENT OF MINES  
OIL AND GAS DIVISION

**WELL RECORD**  
*(Add to System file, 9m)*

Permit No. 636A

Oil or Gas Well \_\_\_\_\_ (KIND)

Company South Penn Natural Gas Co.  
Address Smithfield, W. Va.  
Farm J.B. Dewhurst #17 on Beverlin Fork Acres 3100  
Location (waters) \_\_\_\_\_  
Well No. 17 Elev. 1283.33  
District McGlelland County Doddridge  
The surface of tract is owned in fee by \_\_\_\_\_  
Address \_\_\_\_\_  
Mineral rights are owned by \_\_\_\_\_  
Address \_\_\_\_\_  
Drilling commenced \_\_\_\_\_  
Drilling completed \_\_\_\_\_  
Date Shot \_\_\_\_\_ From \_\_\_\_\_ To \_\_\_\_\_  
With \_\_\_\_\_  
Open Flow \_\_\_\_\_ /10ths Water in \_\_\_\_\_ Inch  
\_\_\_\_\_ /10ths Merc. in \_\_\_\_\_ Inch  
Volume \_\_\_\_\_ Cu. Ft.  
Rock Pressure \_\_\_\_\_ lbs. \_\_\_\_\_ hrs.  
Oil 75 bbls., 1st 24 hrs.  
Fresh water \_\_\_\_\_ feet \_\_\_\_\_ feet  
Salt water \_\_\_\_\_ feet \_\_\_\_\_ feet

Casing and Tubing	Used in Drilling	Left in Well	Packers
Size			Kind of Packer
16			
13			
10	<b>435</b>	<b>435</b>	Size of
8 1/4	<b>1396</b>	<b>1396</b>	
6 5/8	<b>2347</b>	<b>2347</b>	Depth set
5 3/16			
3			Perf. top
2 <b>COM.</b>	<b>2416</b>	<b>2416</b>	Perf. bottom
Liners Used			Perf. top
			Perf. bottom

CASING CEMENTED \_\_\_\_\_ SIZE \_\_\_\_\_ No. Ft. \_\_\_\_\_ Date \_\_\_\_\_  
COAL WAS ENCOUNTERED AT \_\_\_\_\_ FEET \_\_\_\_\_ INCHES  
\_\_\_\_\_ FEET \_\_\_\_\_ INCHES FEET \_\_\_\_\_ INCHES  
\_\_\_\_\_ FEET \_\_\_\_\_ INCHES FEET \_\_\_\_\_ INCHES

Formation	Color	Hard or Soft	Top	Bottom	Oil, Gas or Water	Depth Found	Remarks
Conductor				16			
Pitts. Coal			988				
Pencil Cave			2255				
Big Injun			2337				
Gas			2367				
Oil			2413				
Total			2428				
<u>Torpedo Record</u>							
		Jan. 26, 1897		16 Qts.	8' Shell	2410'	Top
		Apr. 20, 1900		20	8'	2409	
		Nov. 11, 1908		30	7' 6"	2409	
		Dec. 28, 1920		40	5'	2409	