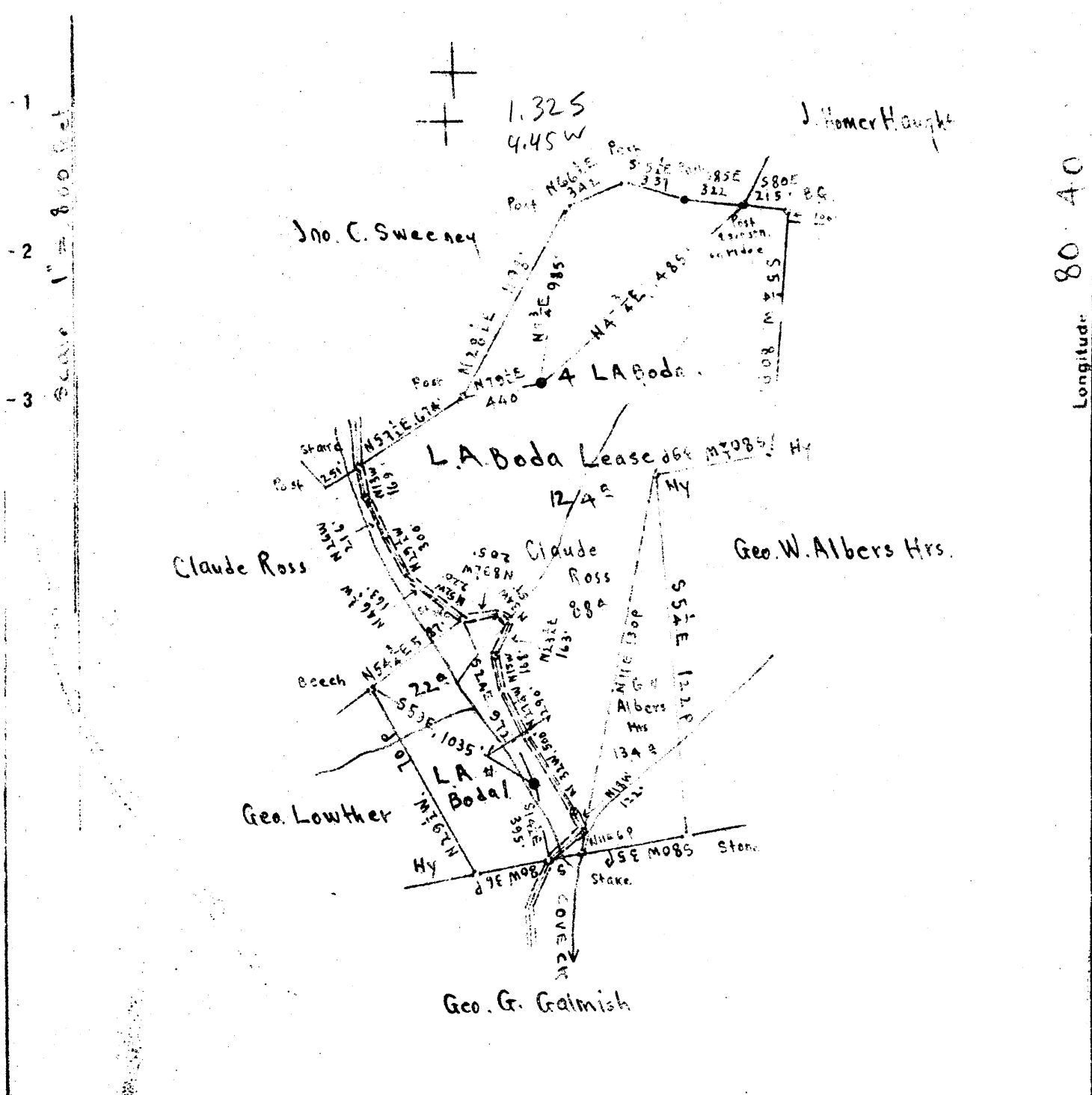


Latitude 39 10

Longitude 80 40



Surface : Claude Ross , RFD #1 , Blandville , Doddridge Co. W.Va.
 Coal : H.C. Schulte , Pennsboro. W.Va.

New Location
 Drill Deeper
 Abandonment On 800' Map # 7

S20-21 W 8

Company The Tri-state Pipe Co.
 Address Bellaire, Ohio
 Farm L.A. Boda
 Tract _____ Acres 12.4 Lease No. _____
 Well (Farm) No. 1^{9th} A Serial No. _____
 Elevation (Spirit Level) A - Floor, 916.32. Ground 914.32
B - Floor, 1106.25. Ground 1103.85
 Quadrangle VADIS
 County Doddridge District Cove
 Engineer E.C. Tabler
 Engineer's Registration No. _____
 File No. _____ Drawing No. _____
 Date March 4th, 1948 Scale 1" = 800 Feet.

STATE OF WEST VIRGINIA
 DEPARTMENT OF MINES
 OIL AND GAS DIVISION
 CHARLESTON

WELL LOCATION MAP
 FILE NO. DOD-628-A-#1

+ Denotes location of well on United States Topographic Maps, scale 1 to 62,500, latitude and longitude lines being represented by border lines as shown.
 - Denotes one inch spaces on border line of original tracing.



554

STATE OF WEST VIRGINIA
DEPARTMENT OF MINES
OIL AND GAS DIVISION

WELL RECORD

Permit No. 678-A

Oil or Gas Well _____ (KIND)

Company The Tri-State Pipe Company
Address Bellaire, O.
Farm L. A. Bode Acres 124
Location (waters) _____
Well No. 1 Elev. 916.35
District Cove County Doddridge
The surface of tract is owned in fee by Claude Ross,
RFD #1, Blandville Address Dodd. Co., W. Va.
Mineral rights are owned by H. C. Schulte
Address Pennsboro, W. Va.

| Casing and Tubing | Used in Drilling | Left in Well | Packers |
|-------------------|------------------|--------------|-----------------------------|
| Size | | | Depth Set 2100 |
| 16 | | | 10/14/24 Kind of Pack |
| 13 | | | 5-3/16" x 6-5/8" Size of |
| 10 | 200 | Pulled | x 16" |
| 8 3/4 | 1100 | Pulled | |
| 6 3/4 | 2038' 3" | | Depth set |
| 5 3/16 | 2113' 6" | | |
| 3 | | | Perf. top |
| 2 | | | Perf. bottom |
| Liners Used | | | Perf. top |
| | | | Perf. bottom |

Drilling commenced _____
Drilling completed 9/27/01
Date Shot 1901 From _____ To Top 2567
With 1919 " 2566
Open Flow /10ths Water in _____ Inch
/10ths Merc. in _____ Inch
Volume _____ Cu. Ft.
Rock Pressure _____ lbs. _____ hrs.
Oil _____ bbls., 1st 24 hrs.
Fresh water _____ feet _____ feet
Salt water _____ feet _____ feet

CASING CEMENTED _____ SIZE _____ No. Ft. _____ Date _____
COAL WAS ENCOUNTERED AT _____ FEET _____ INCHES
_____ FEET _____ INCHES _____ FEET _____ INCHES
_____ FEET _____ INCHES _____ FEET _____ INCHES

| Formation | Color | Hard or Soft | Top | Bottom | Oil, Gas or Water | Depth Found | Remarks |
|---------------|-------|--------------|----------|----------|-------------------|-------------|---------|
| Black Cave | | | 790 | | | | |
| Cow Run Sand | | | 1135 | 1176 | | | |
| Salt Sand | | | 1390 | 1415 | | | |
| 2nd Salt Sand | | | 1510 | 1535 | | | |
| 3d " " | | | 1555 | 1650 | | | |
| Water | | | 1690 | | | | |
| Maxon Sand | | | 1690 | 1750 | | | |
| Big Lime | | | 1876 | 1936 | | | |
| Big Injun | | | 1936 | 2040 | | | |
| Gas (Light) | | | 1950 | | | | |
| Stray Sand | | | 2553 | 2561 | | | |
| Gordon Sand | | | 2565 1/2 | 2570 1/2 | | | |
| Oil | | | 2567 | 2570 1/2 | | | |
| Total Depth | | | | 2590 1/2 | | | |

