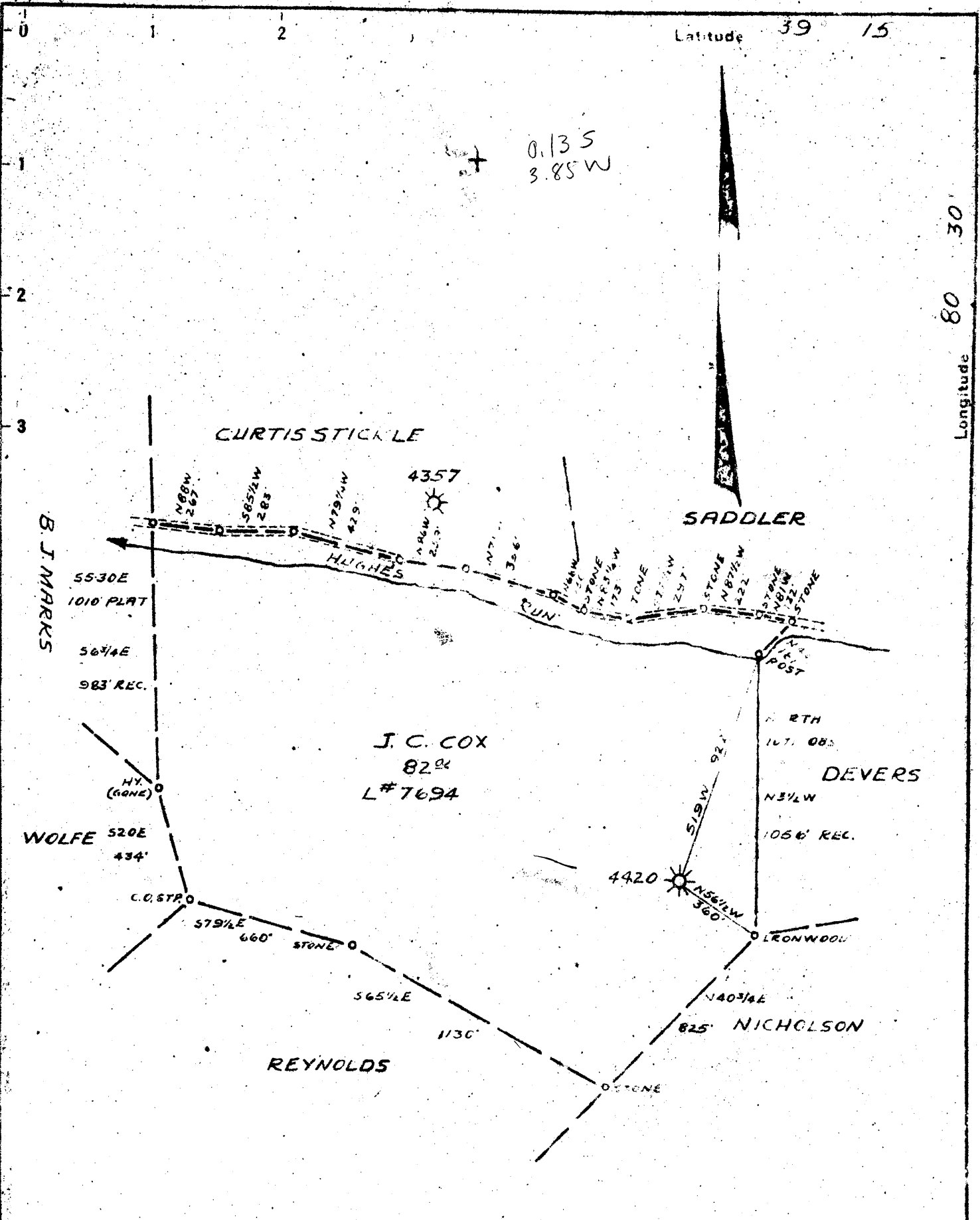


Latitude 39 15

Longitude 80 30

0.13 S  
3.85 W



- New Location
- Drill Deeper
- Abandonment

Company PITTSBURGH & WVA GAS CO.  
 Address CLARKSBURG, WVA  
 Farm J. C. COX  
 Tract \_\_\_\_\_ Acres 82 Lease No. 7694  
 Well (Farm) No. TWO Serial No. 4420  
 Elevation (Spirit Level) 1203' V.A.  
 Quadrangle VADIS N.E. 12  
 County DODDRIDGE District GREENBRIER  
 Engineer Kenneth B. Moore  
 Engineer's Registration No. \_\_\_\_\_  
 File No. VOLD-32P29 Drawing No. \_\_\_\_\_  
 Date NOV 24, 1947 Scale 1" = 500

STATE OF WEST VIRGINIA  
 DEPARTMENT OF MINES  
 OIL AND GAS DIVISION  
 CHARLESTON

**WELL LOCATION MAP**  
 FILE NO. DOD-587-A

+ Denotes location of well on United States Topographic Maps, scale 1 to 62,500, latitude and longitude lines being represented by border lines as shown.  
 - Denotes one inch spaces on border line of original tracing.



STATE OF WEST VIRGINIA  
DEPARTMENT OF MINES  
OIL AND GAS DIVISION

5737

WELL RECORD

"GAS"

Permit No. \_\_\_\_\_

Oil or Gas Well \_\_\_\_\_ (KIND)

Company Pittsburgh & West Va Gas Company.  
Address Clarksburg, West Va.  
Farm J. C. Cox Acres 82  
Location (waters) Vadla N/E. 1-2  
Well No. 1120 Elev. 1203' VA  
District Mount Greenbrier County Doddridge  
The surface of tract is owned in fee by Claude Freeman  
R.D.#3 Address Salon, W. Va.  
Mineral rights are owned by Curtis Stichel et al.  
R.D.#1 Address Salon, West Va.  
Drilling commenced January 21st, 1916  
Drilling completed March 15th, 1916  
Date Shot 6-26-1916 From 2939 To 2943'  
With 10 Quarts - Nitro Glycerine.  
Open Flow \_\_\_\_\_ /10ths Water in \_\_\_\_\_ Inch  
\_\_\_\_\_ /10ths Merc. in \_\_\_\_\_ Inch  
Volume \_\_\_\_\_ Cu. Ft.  
Rock Pressure \_\_\_\_\_ lbs. \_\_\_\_\_ hrs.  
Oil \_\_\_\_\_ bbls., 1st 24 hrs.  
Fresh water \_\_\_\_\_ feet \_\_\_\_\_ feet  
Salt water \_\_\_\_\_ feet \_\_\_\_\_ feet

Casing and Tubing	Used in Drilling	Left in Well	Packers
Size			Kind of Packer
16			
13			
10	264'	None	Size of
8 1/4	1306'	202'	
6 5/8	2202'	2202'	Depth set
5 3/16	2842'	2842'	
3			Perf. top
2			Perf. bottom
Liners Used			Perf. top
			Perf. bottom

CASING CEMENTED \_\_\_\_\_ SIZE \_\_\_\_\_ No. Ft. \_\_\_\_\_ Date \_\_\_\_\_  
COAL WAS ENCOUNTERED AT 278 FEET 24 INCHES  
549 FEET 36 INCHES 846 FEET 72 INCHES  
\_\_\_\_\_ FEET \_\_\_\_\_ INCHES \_\_\_\_\_ FEET \_\_\_\_\_ INCHES

Formation	Color	Hard or Soft	Top	Bottom	Oil, Gas or Water	Depth Found	Remarks
Clay			0	13			
Red Rock	Red	Soft	13	120			
Slate	Black	"	120	130	Water	120'	
Red Rock	Black Red	Hard Soft	130	190			
Lime	White	Hard	190	220			
Slate	Black	Soft	220	278			
Coal	"	Soft	278	280			
Slate	"	"	280	320			
Sand	White	Hard	320	350			
Red Rock	Red	Soft	350	425			
Sand	White	"	425	465			
Slate	Black	"	465	495			
Sand	White	Hard	495	516			
Slate	"	Soft	516	549			
Native Coal	Black	"	549	552			
Lime	White	Hard	552	570			
Red Rock	Red	Soft	570	658			
Lime	White	Hard	658	700			
Slate	Black	Soft	700	720			
Sand	White	Hard	720	744			
Slate	Black	Soft	744	760			
Lime	White	Hard	760	770			
Red Rock	Red	Soft	770	790			
Lime	White	Hard	790	835			
Slate	Black	Soft	835	846			
Pgh. Coal			846	852			
Slate	White	Soft	852	880			
Sand	"	Hard	880	928			
Slate	Black	Soft	928	958			
Red Rock			958	1060			
Lime	White	Hard	1060	1080			
Red Rock	Red	Soft	1080	1130			
Slate	Black	"	1130	1150			
Red Rock	Red	"	1150	1249			
Slate	Black	"	1249	1294			
Big Dunkard	White	Hard	1294	1357			
Slate	Black	Soft	1357	1455			
Gas Sand	White	Hard	1455	1482			
Slate Shells	Black		1482	1681			

Formation	Color	Hard or Soft	Top	Bottom	Oil, Gas or Water	Depth Found	Remarks
1st. Salt Sand	White	Hard	1681	1691			
Slate	Black	Soft	1691	1725			
2nd. Salt Sand	White	Hard	1725	1766			
Slate	Black	Soft	1766	1790			
3rd. Salt Sand	White	Hard	1790	1935			
Slate	Black	Soft	1935	2065			
Lime	White	Hard	2065	2085			
Red Rock	Red	Soft	2085	2105			
Lime	White	Hard	2105	2120			
Slate	Black	Soft	2120	2135			
Little Lime	White	Hard	2135	2149			
Slate	Black	Soft	2149	2178			
Big Lime	White	Hard	2178	2235			
Big Injan	"	"	2235	2333	Sh. Gas	2280'	
Slate	Black	Soft	2333	2395	Gas	2326'	
Squaw Sand	White	Hard	2395	2505			
Slate	Black	Soft	2505	2611			
Lime	Blue	Hard	2611	2635			
Slate Shells			2635	2819			
30 Ft. Sand	White	Hard	2819	2839			
Slate	Black	Soft	2839	2893			
Gordon Strey	White	Hard	2893	2913	Gas	2911'	
Slate	Black	Soft	2913	2938			
Gordon Sand	White	Hard	2938	2955	Gas	2941'	
Slate Shells			2955	3110			
Total Depth.....				3110			

October 13th, 1947

Date \_\_\_\_\_, 19\_\_

PITTSBURGH & WEST VA GAS COMPANY.

APPROVED \_\_\_\_\_

By W. G. M. M. M. Owner  
(Title)

