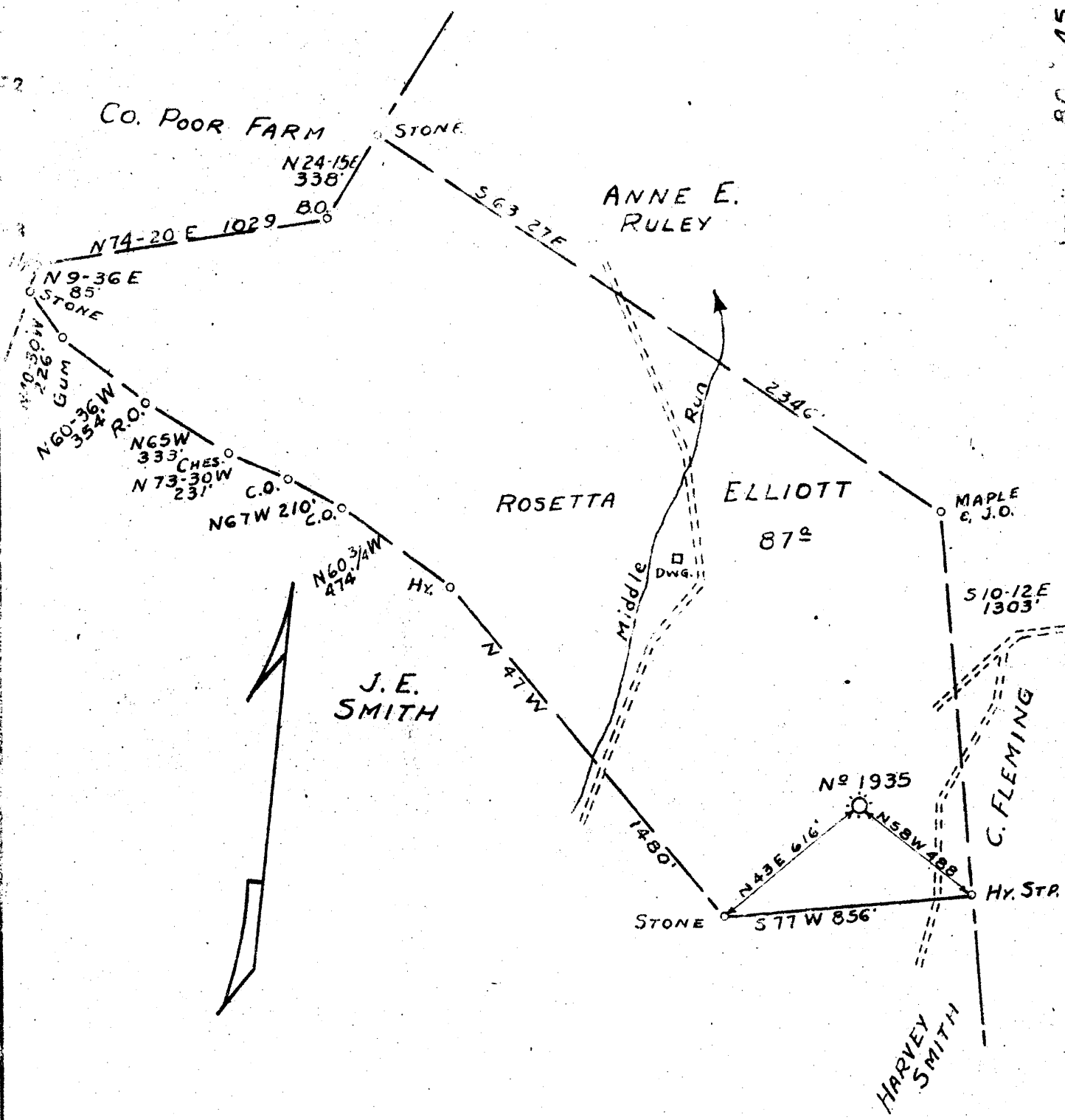


Latitude 39 15

0.29 S  
4.27 W

Longitude 80 45



New Location   
 Drill Deeper   
 Abandonment

Company PITTSBURGH & W. VA. GAS CO.  
 Address CLARKSBURG, W. VA.  
 Farm ROSETTA ELLIOTT  
 Tract \_\_\_\_\_ Acres 87 Lease No. 7192  
 Well (Farm) No. ONE Serial No. 1935  
 Elevation (Spirit Level) 1100-L  
 Quadrangle HOLBROOK N.E. 13  
 County DODDRIDGE District W. UNION  
 Engineer Paul W. Cunningham  
 Engineer's Registration No. \_\_\_\_\_  
 File No. \_\_\_\_\_ Drawing No. \_\_\_\_\_  
 Date SEPT. 29, 1931 Scale 1" = 500'

STATE OF WEST VIRGINIA  
 DEPARTMENT OF MINES  
 OIL AND GAS DIVISION  
 CHARLESTON

**WELL LOCATION MAP**  
 FILE NO. DOD-580-A

+ Denotes location of well on United States Topographic Maps, scale 1 to 62,500, latitude and longitude lines being represented by border lines as shown.  
 - Denotes one inch spaces on border line of original tracing.

STATE OF WEST VIRGINIA  
DEPARTMENT OF MINES  
OIL AND GAS DIVISION

473

WELL RECORD

Permit No. 307A

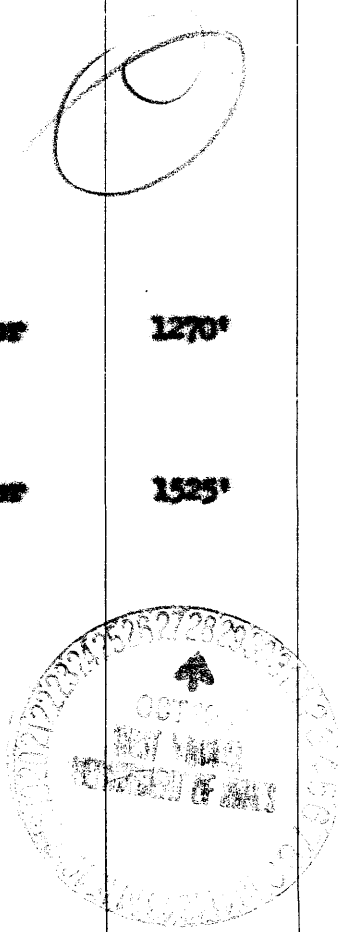
Oil or Gas Well **Gas**  
(Kind)

Company **Pittsburgh & West Va. Gas Company.**  
Address **Clarksburg, West Va.,**  
Farm **Ronetta Elliott farm.** Acres **87**  
Location (waters) **Hallbrook N/S. 1-2**  
Well No. **1935** Elev. **1100'**  
District **West Union** County **Dodridge**  
The surface of tract is owned in fee by **David Elliott, Jr.**  
Address **West Union, W.Va.**  
Mineral rights are owned by **Eleanor F. Maxwell**  
Address **West Union, W.Va.**  
Drilling commenced **July 7th, 1905**  
Drilling completed **September 14th, 1905**  
Date shot **9-1-1905** Depth of shot **208'**  
Open Flow /10ths Water in ..... Inch  
/10ths Merc. in ..... Inch  
Volume ..... Cu. Ft.  
Rock Pressure ..... lbs. .... hrs.  
Oil ..... bbls., 1st 24 hrs.  
Fresh water ..... feet ..... feet  
Salt water ..... feet ..... feet

Casing and Tubing	Used in Drilling	Left in Well	Packers
Size			Kind of Packer
16			
13			
10	<b>223'</b>	<b>223'</b>	Size of
8 1/4	<b>1154'</b>	<b>1154'</b>	
6 5/8	<b>1916'</b>	<b>1916'</b>	Depth set
5 3/16			
3			Perf. top
2			Perf. bottom
Liners Used			Perf. top
			Perf. bottom

CASING CEMENTED ..... SIZE ..... No. Ft. .... Date  
COAL WAS ENCOUNTERED AT **200** FEET **36** INCHES  
**650** FEET **48** INCHES **1878** FEET **84** INCHES  
..... FEET ..... INCHES ..... FEET ..... INCHES

Formation	Color	Hard or Soft	Top	Bottom	Oil, Gas or Water	Depth Found	Remarks
Clay	Yellow		0	79			
Sand	Brown	Soft	79	90			
Slate	White	"	90	100			
Slate	"	"	100	125			
Red Rock	Red	"	125	200			
Native Coal	Black	"	200	203			
Slate	"	"	203	323			
Sand	White	"	323	365			
Slate	Black	"	365	400			
Sand	White	"	400	525			
Slate	Black	"	525	530			
Slate	"	"	530	650			
Fgh. Coal	"	"	650	654			
Sand	White	"	654	860			
LimeSlate	"	Hard	860	1000			
Red Rock	Red	Soft	1000	1075			
Slate	Black	"	1075	1110			
Red Rock	Red	"	1110	1135			
Big Damaged	White	Open	1135	1154			
Slate	Black	Soft	1154	1184			
Shale/Salt Sand	White	"	1184	1295	Water	1270'	
Slate	"	"	1295	1310			
Sand	"	Hard	1310	1360			
Lime	"	"	1360	1405			
Slate	Black	Soft	1405	1425			
Sand	White	Hard	1425	1590	Water	1525'	
Lime	"	"	1590	1620			
Slate	Black	Soft	1620	1640			
Sand	White	Hard	1640	1685			
Slate	Black	Soft	1685	1693			
Sand	White	Hard	1693	1745			
Slate	Black	Soft	1745	1778			
Sand	White	Hard	1778	1810			
Slate	Black	Soft	1810	1850			
Sand	White	Hard	1850	1878			
Coal	Black	Soft	1878	1885			
Pencil Core	"	Soft/Open	1885	1900			
Slate	"	Soft	1900	1920			
Sand	Gray	"	1920	1940			
"	Yellow	Hard	1940	1955			
"	Black	"	1955	1975			



Formation	Color	Hard or Soft	Top	Bottom	Oil, Gas or Water	Depth Found	Remarks
Slate	Black	Soft	1975	1995			
Lime	Brown	Hard	1995	2001			
Slate	Black	Soft	2001	2010			
Big Lime	White	Hard	2010	2057			
Big Inj. Sd.	"	"	2057	2110	Gas	2077'	
Slate	Black	Soft	2110	2190			
Lime	Brown	Hard	2190	2198			
Slate	White	Soft	2198	2225			
Lime	"	Hard	2225	2236			
Slate	"	Soft	2236	2260			
Lime	Brown	Hard	2260	2266			
Slate	White	Soft	2266	2276			
Lime	"	Hard	2276	2320			
Slate	Black	Soft	2320	2400			
Brown Sand	Grey	Hard	2400	2420			
Slate	Black	Soft	2420	2680			
Garden Shells	" & White	Hard	2680	2720			
Slate	Black		2720	2957			
Total Depth				2957'			

Hole filled up to 2150 feet present depth.

October 14th,

Date....., 19

PITTSBURGH & WEST VA GAS COMPANY.

APPROVED..... *W. M. Masten* Owner

By..... (Title)

670

West Union District, Doddridge County, W. Va.  
 By Pittsburgh & W. Va. Gas Co., Clarksburg, W. Va.  
 On.....acres, surface and mineral rights owned by Matson Elliott,  
 West Union, W. Va.

Well was completed Sept. 15, 1905.

Elevation, 1100' L.

13" conductor, 16"; 10" casing, 323'; 8 1/2", 1154'; 6-5/8", 1916'.

Coal was encountered at 200-203, 650-654, and 1878-1885'.

Completion reported to Dept. of Mines Sept. 29, 1931.

Began drg. 7-7-1905; completed 9-14-1905; producing from Big Injun.

Well was shot in Big Injun Sand at 2085'.

Salt water at 1270 and 1525'.

6-5/8" hole. Gas well.

	Top.	Bottom.	Thickness.
Clay, yellow	0	70	70
Sand, brown, soft	70	90	20
Slate, white, soft	90	100	10
Slate, white, soft	100	125	25
Red rock, soft	125	200	75
Native coal, black, soft	200	203	3
Slate, black, soft	203	323	120
Sand, white, soft	323	365	42
Slate, black, soft	365	400	35
Sand, white, soft	400	525	125
Slate, black, soft	525	530	5
Slate, black, soft	530	650	120
Pittsburgh Coal, black, soft	650	654	4
Sand, white, soft	654	860	206
Line-Slate, white, hard	860	1000	140
Red rock, soft	1000	1075	75
Slate, black, soft	1075	1110	35
Red rock, soft	1110	1134	24
Big Dunkard Sand, white, open	1134	1154	20
Slate, black, soft	1154	1184	30
Salt Sand, white, open (water, 1270')	1184	1295	111
Slate, white, soft	1295	1310	15
Sand, white, hard	1310	1360	50
Line, white, hard	1360	1405	45
Slate, black, soft	1405	1425	20
Sand, white, hard (water, 1525')	1425	1590	165
Line, white, hard	1590	1620	30
Slate, black, soft	1620	1640	20
Sand, white, hard	1640	1685	45
Slate, black, soft	1685	1693	8
Sand, white, hard	1693	1745	52
Slate, black, soft	1745	1778	33
Sand, white, hard	1778	1810	32
Slate, black, soft	1810	1850	40
Sand, white, hard	1850	1878	28
Coal, black, soft	1878	1885	7
Pencil Cave, black, soft, open	1885	1900	15
Slate, black, soft	1900	1920	20
Sand, gray, soft	1920	1940	20
Sand, yellow, hard	1940	1955	15
Sand, black, hard	1955	1975	20

(OVER)

ROSETTA ELLIOTT NO. 1935 WELL (Continued).

	Top.	Bottom.	Thickness.
Slate, black, soft	1975	- 1995	20
Lime, brown, hard	1995	- 2001	6
Slate, black, soft	2001	- 2010	9
Big Lime, white, hard	2010	- 2057	47
Big Injun Sand, white, hard (gas, 2077')	2057	- 2077	20
Big Injun Sand, gray, hard	2077	- 2084	7
Big Injun Sand, white, hard	2084	- 2140	56
Slate, black, soft	2140	- 2190	50
Lime, brown, hard	2190	- 2198	8
Slate, white, soft	2198	- 2225	27
Lime, white, hard	2225	- 2234	9
Slate, white, soft	2234	- 2260	26
Lime, brown, hard	2260	- 2266	6
Slate, white, soft	2266	- 2276	10
Lime, white, hard	2276	- 2320	44
Slate, black, soft	2320	- 2400	80
Berea Sand, gray, hard	2400	- 2420	20
Slate, black, soft	2420	- 2680	260
Gordon Shells, black and white, hard	2680	- 2720	40
Slate, black	2720	- 2745	25
Slate, black	2745	- 2930	185
Slate, black, soft, to bottom	2930	- 2957	27