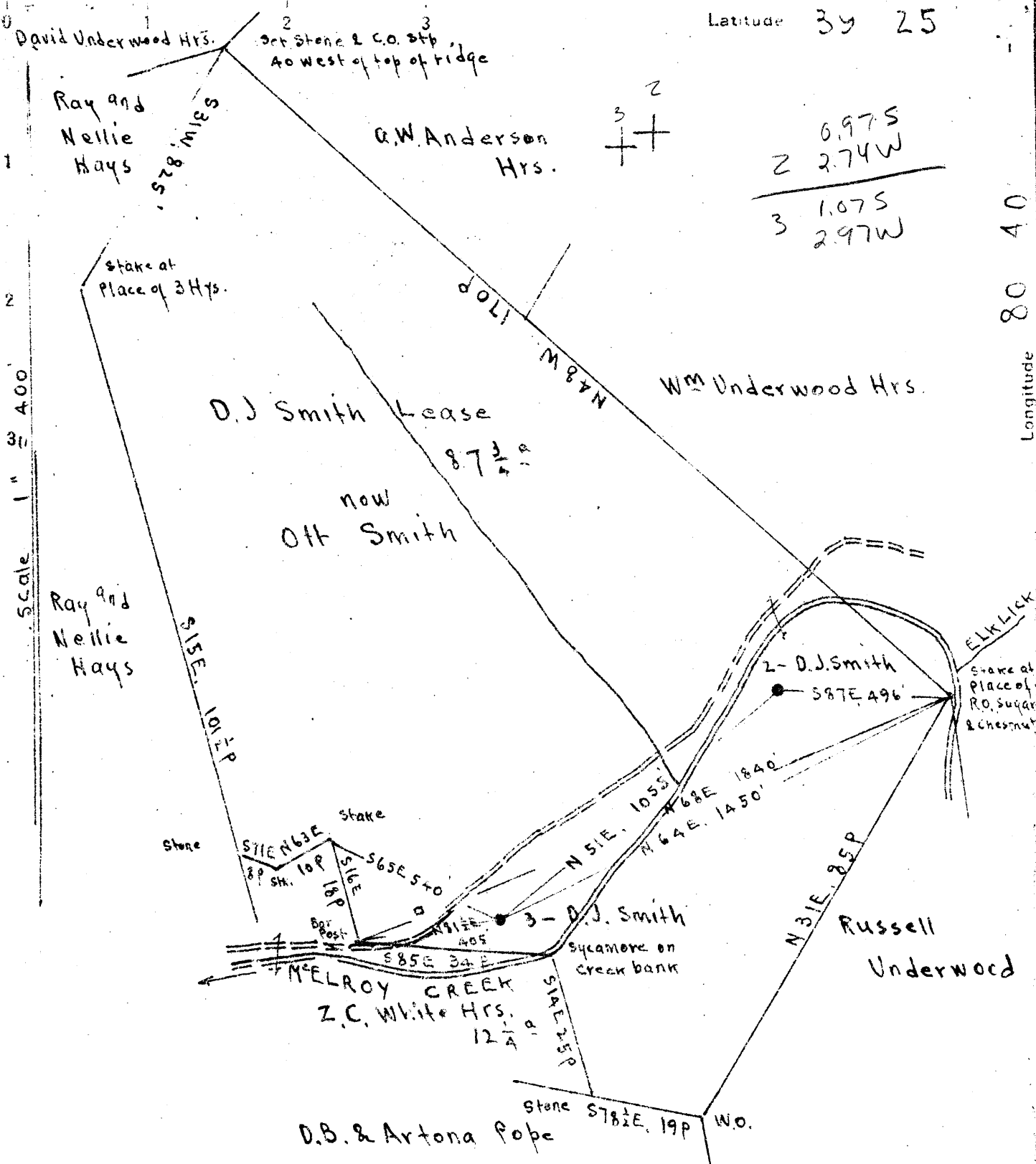


Latitude 39 25



Surface: Ott Smith, West Union (Star Route) W. Va.  
 Coal of Mrs. Blanche George; Address, 216 Chicago St. Fairmont, W. Va.  
 Miss Cilda L. Smith, Madison Ave, Lanewood, Ohio.

New Location  
 Drill Deeper  
 Abandonment

Maps N 37 and N 47, S 3-A W 6

Company Road Supply Co.  
 Address Salem, W. Va.  
 Farm D. J. Smith  
 Tract Acres 87 3/4 Lease No. \_\_\_\_\_  
 Well (Farm) No. 2 and 3 Serial No. \_\_\_\_\_  
 Elevation (Spirit Level) 2 Floor - 747.20 3 Floor - 745.17  
Ground - 745.00 Ground - 741.97  
 Quadrangle Centerpoint  
 County Doddridge District McClellan  
 Engineer E.C. Tabler  
 Engineer's Registration No. \_\_\_\_\_  
 File No. \_\_\_\_\_ Drawing No. \_\_\_\_\_  
 Date Aug. 9<sup>th</sup> 1946 Scale 1" = 400 Feet.

STATE OF WEST VIRGINIA  
 DEPARTMENT OF MINES  
 OIL AND GAS DIVISION  
 CHARLESTON

WELL LOCATION MAP  
 FILE NO. DOD-543-A.2  
~~DOD-544-A.3~~

+ Denotes location of well on United States Topographic Maps, scale 1 to 62,500, latitude and longitude lines being represented by border lines as shown.  
 - Denotes one inch spaces on border line of original tracing.



STATE OF WEST VIRGINIA  
DEPARTMENT OF MINES  
OIL AND GAS DIVISION

449

WELL RECORD

Permit No. 543-A

Oil or Gas Well Oil (KIND)

Company Raad Supply Company  
Address 184 East Main St., Salem, W. Va.  
Farm D. J. Smith Acres 87 3/4  
Location (waters) McElroy Creek  
Well No. 2 Elev. 745.20  
District McClelland County Doddridge  
The surface of tract is owned in fee by Ott Smith  
Star Route Address West Union, W. Va.  
Mineral rights are owned by Mrs. Blanche George & Miss Cilda Smith Address Fairmont, W. Va. Lakewood, Ohio  
Drilling commenced \_\_\_\_\_  
Drilling completed \_\_\_\_\_  
Date Shot 3/3/11 From 1820' To \_\_\_\_\_  
With 6 qts.

Casing and Tubing	Used in Drilling	Left in Well	Packers
Size			
16			Kind of Packer
13			
10	<u>300'</u>	<u>300'</u>	Size of
8 1/4	<u>1037'</u>	<u>1037'</u>	
6 5/8	<u>1815'</u>	<u>1815'</u>	Depth set
5 3/16	<u>348'</u>	<u>348'</u>	
3			Perf. top
2	<u>1900'</u>	<u>1900'</u>	Perf. bottom
Liners Used			Perf. top
			Perf. bottom

Open Flow \_\_\_\_\_ /10ths Water in \_\_\_\_\_ Inch  
\_\_\_\_\_ /10ths Merc. in \_\_\_\_\_ Inch  
Volume \_\_\_\_\_ Cu. Ft.  
Rock Pressure \_\_\_\_\_ lbs. \_\_\_\_\_ hrs.  
Oil \_\_\_\_\_ bbls., 1st 24 hrs.  
Fresh water \_\_\_\_\_ feet \_\_\_\_\_ feet  
Salt water \_\_\_\_\_ feet \_\_\_\_\_ feet

CASING CEMENTED \_\_\_\_\_ SIZE \_\_\_\_\_ No. Ft. \_\_\_\_\_ Date \_\_\_\_\_  
COAL WAS ENCOUNTERED AT 472 FEET \_\_\_\_\_ INCHES  
\_\_\_\_\_ FEET \_\_\_\_\_ INCHES FEET \_\_\_\_\_ INCHES  
\_\_\_\_\_ FEET \_\_\_\_\_ INCHES FEET \_\_\_\_\_ INCHES

Formation	Color	Hard or Soft	Top	Bottom	Oil, Gas or Water	Depth Found	Remarks
Pittsburgh	Coal		depth based on D. J. Smith well No. 3.				
Pittsburgh	Coal		472				
Dunkard	Sand		1018	1078			
Big Injun	Sand		1817				
Black oil	- Gas		1820		Oil & gas		
Pay			1885				
Total Depth				1903			

