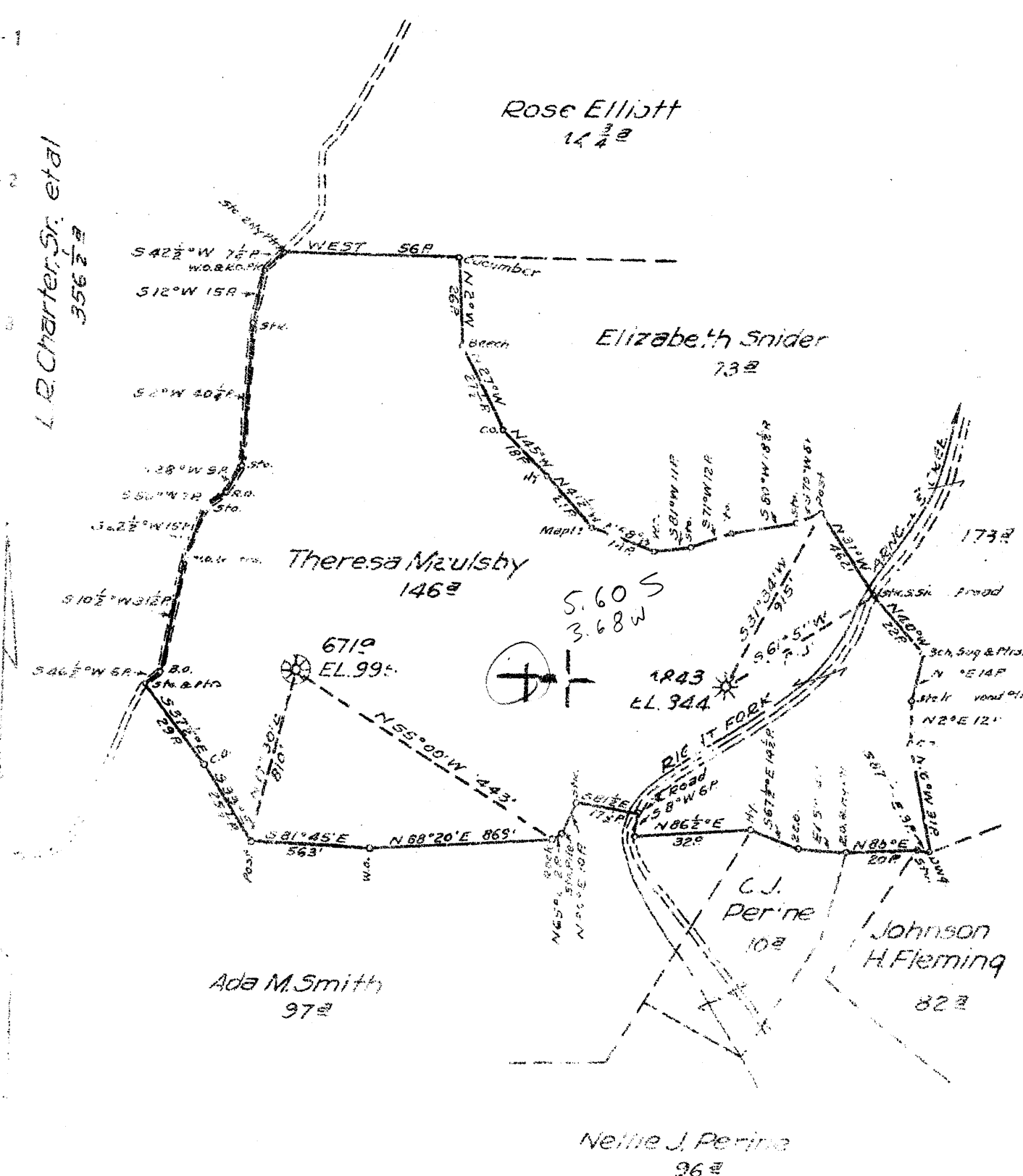


M

Longitude 80 45



New Location  
 Drill Deeper  
 Abandonment **X 6719**

Map State of West Virginia 513 W 11-12 F B 780 P 28 & 30

Company Hope Natural Gas Co  
 Address Creston, W. Va.  
 Farm Theresa Mzulsky  
 Tract Acres 14 1/2 Lease No. 133.35  
 Well (Farm) No. \_\_\_\_\_ Serial No. See Above  
 Elevation (Spirit Level) See Above  
 Corporation West Union  
 County Doddridge District West Union  
 Engineer W. M. Bower  
 Engineer's Registration No. 900  
 File No. \_\_\_\_\_ Drawing No. \_\_\_\_\_  
 Date 5-27-46 Scale 1" = 40 P.

STATE OF WEST VIRGINIA  
 DEPARTMENT OF MINES  
 OIL AND GAS DIVISION  
 CHARLESTON

WELL LOCATION MAP  
 FILE NO. DOD-522-A: No. 6719

+ Denotes location of even or United States Topographic Maps, scale 1" to 62,500', latitude and longitude lines being represented by border lines as shown  
 - Denotes one inch spaces on border line of original tracing.

71336 on CN 6 map



424

STATE OF WEST VIRGINIA  
DEPARTMENT OF MINES  
OIL AND GAS DIVISION

WELL RECORD

Permit No. AB 522-A

Oil Gas Well (KIND)

Company Hope Natural Gas Company.  
 Address 445 West Main St. Clarksburg, W.Va.  
 Farm Theresa M Mausby Acres 146  
 Location (waters) \_\_\_\_\_  
 Well No. 6719 Elev. 995  
 District West Union County Doddridge  
 The surface of tract is owned in fee by \_\_\_\_\_  
 Address \_\_\_\_\_  
 Mineral rights are owned by \_\_\_\_\_  
 Address \_\_\_\_\_  
 Drilling commenced October 9, 1925  
 Drilling completed November 21, 1925  
 Date Shot \_\_\_\_\_ From \_\_\_\_\_ To \_\_\_\_\_  
 With \_\_\_\_\_  
 Open Flow \_\_\_\_\_ /10ths Water in \_\_\_\_\_ Inch  
 \_\_\_\_\_ /10ths Merc. in \_\_\_\_\_ Inch  
 Volume \_\_\_\_\_ Cu. Ft.  
 Rock Pressure \_\_\_\_\_ lbs. \_\_\_\_\_ hrs.  
 Oil \_\_\_\_\_ bbls., 1st 24 hrs.  
 Fresh water \_\_\_\_\_ feet \_\_\_\_\_ feet  
 Salt water 1410 feet \_\_\_\_\_ feet

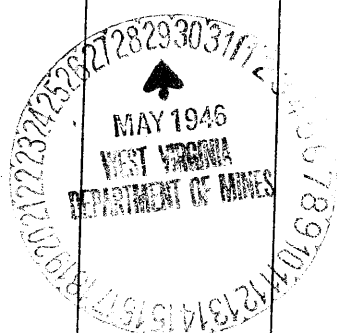
Casing and Tubing	Used in Drilling	Left in Well	Packers
Size			
16			Kind of Packer
13			
10	<b>474</b>	<b>312</b>	Size of
8 1/4	<b>1060</b>	<b>Pulled</b>	
6 5/8	<b>1929</b>	<b>1929</b>	Depth set
5 3/16			
3			Perf. top
2			Perf. bottom
Liners Used			Perf. top
			Perf. bottom

not cemented

CASING CEMENTED \_\_\_\_\_ SIZE \_\_\_\_\_ No. Ft. \_\_\_\_\_ Date \_\_\_\_\_

COAL WAS ENCOUNTERED AT 540 FEET 36 INCHES  
 \_\_\_\_\_ FEET \_\_\_\_\_ INCHES FEET \_\_\_\_\_ INCHES  
 \_\_\_\_\_ FEET \_\_\_\_\_ INCHES FEET \_\_\_\_\_ INCHES

Formation	Color	Hard or Soft	Top	Bottom	Oil, Gas or Water	Depth Found	Remarks
Pittsburgh	Coal		540	543			
Little Dunkard			953	968			
Big Dunkard			1025	1056			
Gas sand			1173	1208			
First Salt			1240	1280			
Second Salt			1324	1418	water	1410	
Maxon			1815	1853			
Pencil cave			1853	1864			
Big Lime			1864	1935	show gas	1873	
Big Injun			1935	2007	gas	1995 1998	
					show oil	1964	
Total depth				2034			



Formation	Color	Hard or Soft	Top	Bottom	Oil, Gas or Water	Depth Found	Remarks

Date May 24, 1946, 194

APPROVED Hope Natural Gas Company, Owner

By J. R. [Signature] General Superintendent.

