

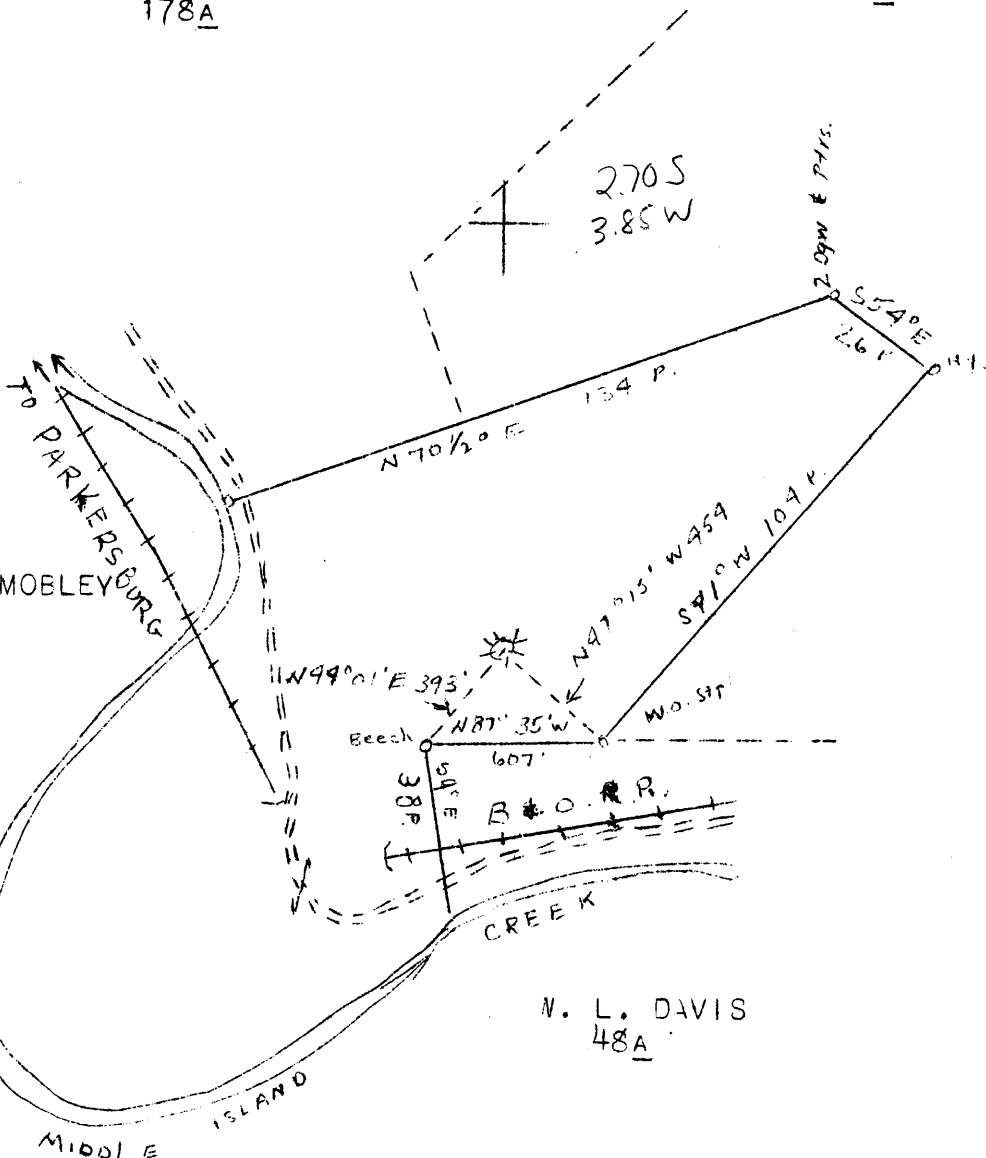
LATITUDE 39° 20'

LONGITUDE 80° 40'

P. N. KEMPER  
178A

MARY M. SHANNON  
100 A

C. C. MOBLEYBURG  
11A



N. L. DAVIS  
48A

L. R. CHARTER  
138 A

NEW LOCATION  
DRILL DEEPER  
ABANDONMENT X

7.5' loc  
2.705 3920  
1.70 W 804230  
calc 15' loc 2.705  
3.93 W

MAP SHEET 60 SQUARES S11 W8 F.B. 775 P. 39

COMPANY HOPE NATURAL GAS CO.  
 ADDRESS CLARKSBURG, W. VA.  
 FARM SAMUEL RUSSELL  
 TRACT        ACRES 75 LEASE NO. 4837  
 WELL (FARM) NO.        SERIAL NO. 911  
 ELEVATION (SPIRIT LEVEL) 998  
 QUADRANGLE CENTERPOINT  
 COUNTY DODDRIDGE DIST. W. UNION  
 ENGINEER W. M. BOWERS  
 ENGINEER'S REGISTRATION NO. 900  
 FILE NO.        DWG. NO.         
 DATE 3/5/46 SCALE 1" - 40 P.

STATE OF WEST VIRGINIA  
 DEPARTMENT OF MINES  
 OIL AND GAS DIVISION  
 CHARLESTON  
 WELL LOCATION MAP

FILE NO. DOD - 509 A

+ DENOTES LOCATION OF WELL ON U. S. TOPOGRAPHIC MAPS, SCALE 1 TO 62,500 LATITUDE AND LONGITUDE LINES BEING REPRESENTED BY BORDER LINES AS SHOWN.

- DENOTES ONE INCH SPACES ON BORDER LINE OF ORIGINAL TRACING.



STATE OF WEST VIRGINIA  
DEPARTMENT OF MINES  
OIL AND GAS DIVISION

417

WELL RECORD

Permit No. 509-A

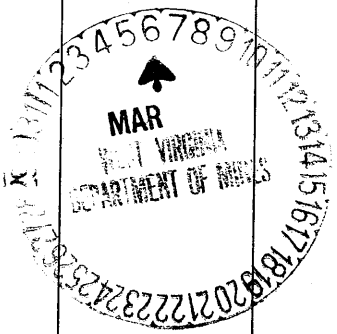
Oil or Gas Well Gas

Company Hope Natural Gas Company  
 Address 445 W. Main St. Clarksburg, W. Va.  
 Farm Samuel Russell Acres 75  
 Location (waters) \_\_\_\_\_  
 Well No. 911 Elev. 998  
 District West Union County Doddridge  
 The surface of tract is owned in fee by John Cumpston  
 Address r#2 West Union, W.V.  
 Mineral rights are owned by \_\_\_\_\_  
 Address \_\_\_\_\_  
 Drilling commenced Feb. 23, 1917  
 Drilling completed Mar. 23, 1917  
 Date Shot \_\_\_\_\_ From \_\_\_\_\_ To \_\_\_\_\_  
 With \_\_\_\_\_  
 Open Flow \_\_\_\_\_ /10ths Water in \_\_\_\_\_ Inch  
 \_\_\_\_\_ /10ths Merc. in \_\_\_\_\_ Inch  
 Volume \_\_\_\_\_ Cu. Ft.  
 Rock Pressure \_\_\_\_\_ lbs. \_\_\_\_\_ hrs.  
 Oil \_\_\_\_\_ bbls., 1st 24 hrs.  
 Fresh water None recorded feet \_\_\_\_\_ feet  
 Salt water None recorded feet \_\_\_\_\_ feet

Casing and Tubing	Used in Drilling	Left in Well	Packers
Size			
16	<del>None</del>		Kind of Packer
13	<del>xxxx</del>	None	
10	200	None	Size of
8 3/4	970	970	
6 3/4	1742	1742	Depth set
5 3/16			
3			Perf. top
2	2536	2536	Perf. bottom
Liners Used			Perf. top
			Perf. bottom

CASING CEMENTED Not cemented SIZE \_\_\_\_\_ No. Ft. \_\_\_\_\_ Date \_\_\_\_\_  
 COAL WAS ENCOUNTERED AT 385 FEET 24 INCHES  
 \_\_\_\_\_ FEET \_\_\_\_\_ INCHES FEET \_\_\_\_\_ INCHES  
 \_\_\_\_\_ FEET \_\_\_\_\_ INCHES FEET \_\_\_\_\_ INCHES

Formation	Color	Hard or Soft	Top	Bottom	Oil, Gas or Water	Depth Found	Remarks
Pgh. C coal			385	387			
Little Dunkard			822	840			
Big Dunkard			960	1000			
Gas Sand			1030	1110			
Salt sand			1220	1338			
2nd Salt Sand			1365	1400			
Maxon			1500	1575			
Little Lime			1690	1705			
Pencil Cave			1705	1710			
Blue Monday			1710	1722			
Big Lime			1750	1801			
Big Injun			1801	1950	Gas	1823 - Show	
Gomion			2495	2510	Gas	1903	
Total depth				2541			



Formation	Color	Hard or Soft	Top	Bottom	Oil, Gas or Water	Depth Found	Remarks

Date March 5, 1946

APPROVED Hope Natural Gas Company

By \_\_\_\_\_  
 (Title) Henry L. Ashby

*E. W. Swney*  
*Gen. Supt.*

