

Latitude 37 15

Longitude 80 40

0.235
0.52W

Robt. Nicholson.

Frank Abels
29 A.

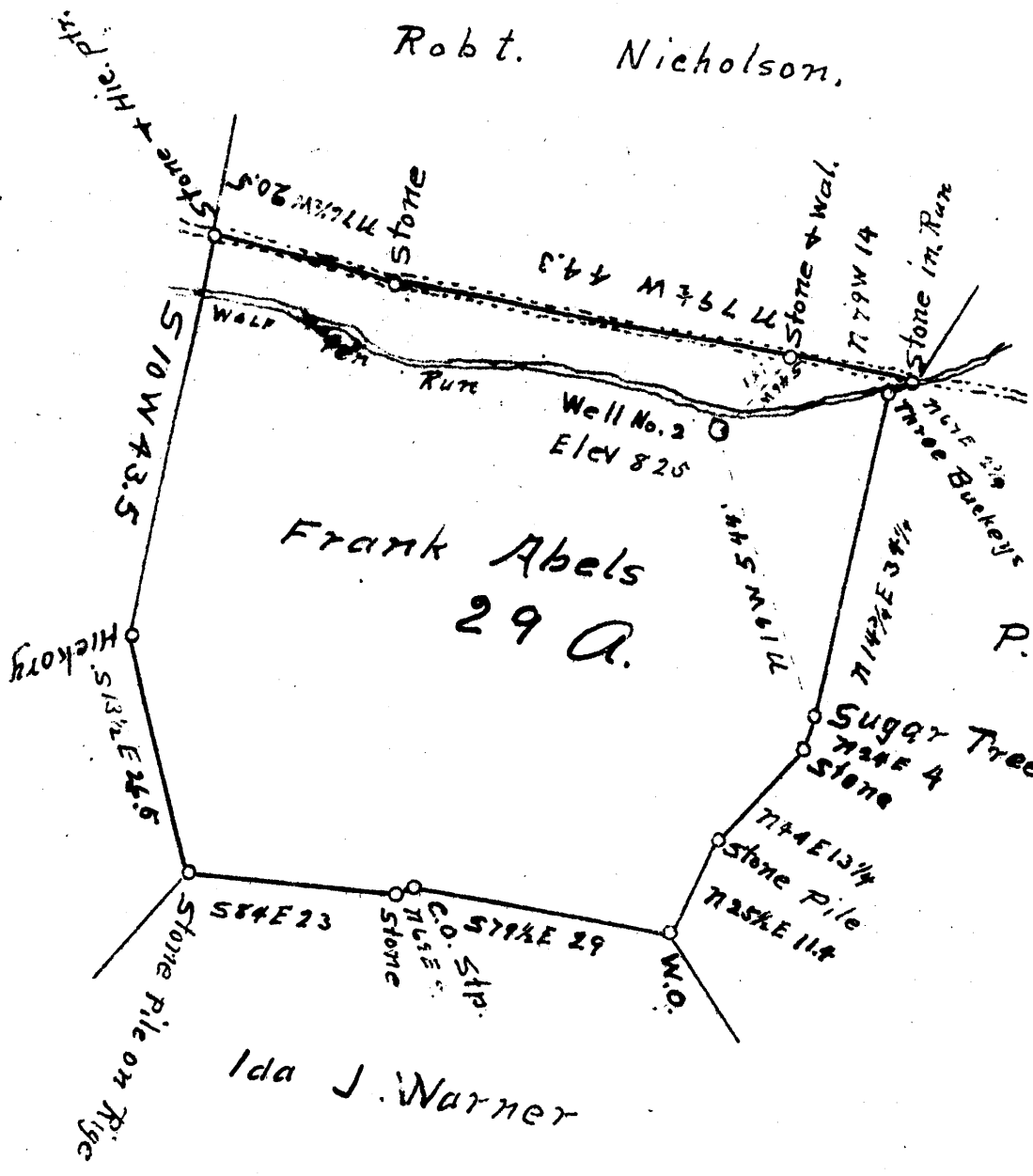
P. C. Wolf

Ida J. Warner

Well No. 2
Elev 825

Sugar Tree
Stone

Stone Pile



New Location
 Drill Deeper
 Abandonment

Company P. and M. Oil Co.
 Address West Union, W. Va.
 Farm Frank Abels,
 Tract One Acres 29 Lease No. _____
 Well (Farm) No. 2 Serial No. _____
 Elevation (Spirit Level) 825
 Quadrangle Vadis
 County Doddridge District New Milton
 Engineer J. M. Martin
 Engineer's Registration No. 84
 File No. _____ Drawing No. _____
 Date Dec. 8, 1943 Scale 20 P. = 1"

STATE OF WEST VIRGINIA
 DEPARTMENT OF MINES
 OIL AND GAS DIVISION
 CHARLESTON

WELL LOCATION MAP
 FILE NO. DOD - 455 - A

+ Denotes location of well on United States Topographic Maps, scale 1 to 62,500, latitude and longitude lines being represented by border lines as shown.
 - Denotes one inch spaces on border line of original tracing.

FRANK ABLES NO. 1 WELL.

New Milton District, Doddridge County, W. Va.

By P. & M. Oil Co., West Union, W. Va.

Abandoned under permit Dod-~~453~~-A. 453

On 29 acres, on Wolfpen Run.

Elevation, 1025' L.

Drilling commenced Sept. 21, 1920; completed Nov. 10, 1920.

10" casing, 445' (pulled); 8 $\frac{1}{4}$ " 1200' (pulled); 6 $\frac{5}{8}$ " 2052'.

Oil well. Abandonment reported to Dept. of Mines (not dated or stamped).

Record to RCT from Mrs. Griffith July 16, 1946. Old File No. 422.

WELL DRILLED BY J. E. TRAINER AND GEO. TRAVIS, ORIGINAL OWNERS.

	Top.	Bottom.
Pittsburgh Coal	695	- 696
Little Dunkard Sand	1100	- 1140
Big Dunkard Sand	1195	- 1260
Gas Sand	1300	- 1315
1st Salt Sand	1440	- 1480
2nd Salt Sand	1500	- 1670
3rd Salt Sand	1720	- 1775
Maxton Sand	1910	- 1945
Little Lime	2000	- 2030
Pencil Cave	2030	- 2040
Big Lime	2040	- 2090
Big Injun Sand (oil, 2090-2094')	2090	- 2172
Total depth		2172