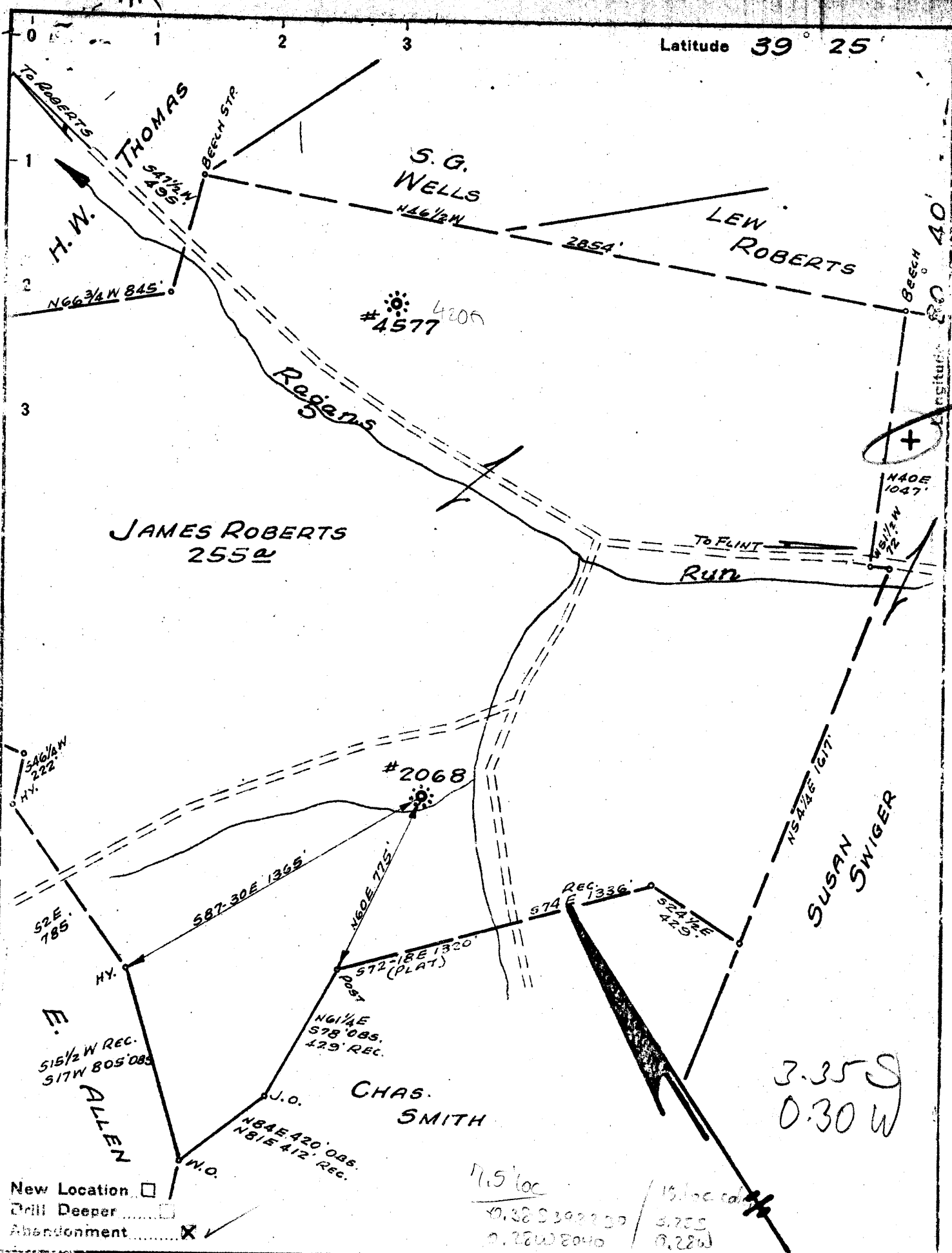


Latitude 39° 25'



Company PITTSBURGH & W.VA. GAS CO
 Address CLARKSBURG, W.VA.
 Farm JAMES ROBERTS
 Tract _____ Acres 255 Lease No. 4909
 Well (Farm) No. ONE Serial No. 2068
 Elevation (Spirit Level) 884' V.A.
 Quadrangle CENTERPOINT S.W. 2L
 County DODDRIDGE District M^cGLELLAN
 Engineer Paul W. Cunningham
 Engineer's Registration No. _____
 File No. V-105.P-117 Drawing No. _____
 Date SEPT. 22, 1942 Scale 1" = 500'

STATE OF WEST VIRGINIA
 DEPARTMENT OF MINES
 OIL AND GAS DIVISION
 CHARLESTON

WELL LOCATION MAP
 FILE NO. DOD-414-A
was 1017 9285

+ Denotes location of well on United States Topographic Maps, scale 1 to 62,500, latitude and longitude lines being represented by border lines as shown.

- Denotes one inch spaces on border line of original tracing.

STATE OF WEST VIRGINIA
DEPARTMENT OF MINES
OIL AND GAS DIVISION

337

WELL RECORD

Permit No. **414-A**

Oil or Gas Well **GAS**
(KIND)

Company **Pittsburgh & West Va Gas Company.**
 Address **Clarksburg, West Va.,**
 Farm **James Roberts** Acres **255**
 Location (waters) **Cpt. S/W. 2-1**
 Well No. **2068** Elev. **884'**
 District **McClellan** County **Doddridge**
 The surface of tract is owned in fee by **Louisa Roberts.**
R.F.D.#1 - Box 44 Address **Morgansville, W. Va.**
 Mineral rights are owned by **Louisa Roberts**
R.F.D.#1 - Box 44 Address **Morgansville, W. Va.**
 Drilling commenced **October 1, 1910**
 Drilling completed **December 1st, 1910**
 Date Shot _____ From _____ To _____
 With _____

| Casing and Tubing | Used in Drilling | Left in Well | Packers |
|-------------------|------------------|--------------|----------------|
| Size | | | Kind of Packer |
| 16 | | | |
| 13 | | | |
| 10 | 255' | 255' | Size of |
| 8 1/4 | 972' | 972' | |
| 6 1/2 | 1821' | 1821' | Depth set |
| 5 3/16 | | | |
| 3 | | | Perf. top |
| 2 | | | Perf. bottom |
| Liners Used | | | Perf. top |
| | | | Perf. bottom |

Open Flow /10ths Water in _____ Inch
 /10ths Merc. in _____ Inch
 Volume _____ Cu. Ft.
 Rock Pressure _____ lbs. _____ hrs.
 Oil _____ bbls., 1st 24 hrs.
 Fresh water _____ feet _____ feet
 Salt water _____ feet _____ feet

CASING CEMENTED _____ SIZE _____ No. Ft. _____ Date _____
 COAL WAS ENCOUNTERED AT **238** FEET **2 1/2** INCHES
 _____ FEET _____ INCHES _____ FEET _____ INCHES
 _____ FEET _____ INCHES _____ FEET _____ INCHES

| Formation | Color | Hard or Soft | Top | Bottom | Oil, Gas or Water | Depth Found | Remarks |
|---------------|--------|--------------|------|--------|-------------------|-------------|------------|
| Mud | Yellow | Soft | 88 | 85 | | | |
| Lime | Blue | Hard | 15 | 60 | Water | 30' | Hole full. |
| Red Rock | Red | Soft | 60 | 70 | | | |
| Lime | White | Hard | 70 | 92 | | | |
| Red Rock | Red | Soft | 92 | 110 | | | |
| Lime&Slate | Dark | Hard&Soft | 110 | 220 | | | |
| Sand | White | Hard | 220 | 238 | | | |
| Coal | Black | Soft | 238 | 240 | | | |
| Slate | White | " | 240 | 270 | | | |
| Lime | Dark | Hard | 270 | 295 | | | |
| Red Rock | Red | Soft | 295 | 315 | | | |
| Lime&Slate | Dark | Hard&Soft | 315 | 395 | | | |
| Sand | White | Soft | 395 | 420 | Water | 398' | (Little) |
| Slate | " | " | 420 | 430 | | | |
| Sand | " | Hard | 430 | 460 | | | |
| Red Rock | Red | Soft | 460 | 465 | | | |
| Slate | Brown | Soft | 465 | 478 | | | |
| Lime | White | Hard | 478 | 492 | | | |
| Slate | Brown | Soft | 492 | 497 | | | |
| Lime | White | Hard | 497 | 518 | | | |
| Slate | Brown | Soft | 518 | 538 | | | |
| Lime | White | Hard | 538 | 545 | | | |
| Hurry Up Sand | " | " | 545 | 590 | | | |
| Slate | " | Soft | 590 | 658 | | | |
| Red Rock | Red | " | 658 | 670 | | | |
| Lime | Dark | Hard | 670 | 685 | | | |
| Slate-Lime | " | Soft&Hard | 685 | 730 | | | |
| Red Rock | Red | Soft | 730 | 780 | | | |
| L. Dunkard | White | Hard | 780 | 800 | | | |
| Slate | " | Soft | 800 | 835 | | | |
| Lime | " | Hard | 835 | 850 | | | |
| Red Rock | Red | Soft | 850 | 860 | | | |
| Lime | White | Hard | 860 | 900 | | | |
| Slate | " | Soft | 900 | 910 | | | |
| Sand | " | Hard | 910 | 930 | | | |
| Slate | Black | Soft | 930 | 942 | | | |
| Big Dunkard | White | Hard | 942 | 980 | | | |
| Slate | " | Soft | 980 | 1037 | | | |
| Lime | " | Hard | 1037 | 1084 | | | |
| Slate | " | Soft | 1084 | 1094 | | | |
| 1st Gas Sand | " | Hard | 1094 | 1178 | | | |
| Slate | Dark | Soft | 1178 | 1188 | | | |

| Formation | Color | Hard or Soft | Top | Bottom | Oil, Gas or Water | Depth Found | Remarks |
|------------------|-------|--------------|------|--------|-------------------|-------------|---------|
| Lime&Shell | White | Hard&Soft | 1188 | 1220 | | | |
| Slate | Black | Soft | 1220 | 1240 | | | |
| 2nd. Gas Sand | White | Hard | 1240 | 1272 | | | |
| Slate | " | Soft | 1272 | 1277 | | | |
| Lime | Dark | Hard | 1277 | 1295 | | | |
| Slate | " | Soft | 1295 | 1306 | | | |
| Lime | White | Hard | 1306 | 1320 | | | |
| 1st. Salt Sand | Dark | " | 1320 | 1340 | | | |
| Slate | Black | Soft | 1340 | 1370 | | | |
| 2nd. Salt Sand | White | Hard | 1370 | 1435 | | | |
| Slate | Dark | Soft | 1435 | 1438 | | | |
| 3rd. Salt Sand | " | Hard | 1438 | 1490 | Water | 1460' | |
| Slate | Black | Soft | 1490 | 1500 | | | |
| 4th. Salt Sand | White | Hard | 1500 | 1590 | | | |
| Slate | Black | Soft | 1590 | 1595 | | | |
| Maxon Sand | White | Hard | 1595 | 1633 | | | |
| Slate | Black | Soft | 1633 | 1643 | | | |
| Lime-Shell | White | Hard&Soft | 1643 | 1660 | | | |
| Maxon Sand | " | Hard | 1660 | 1730 | | | |
| Slate | Black | Soft | 1730 | 1750 | | | |
| Lime | Dark | Hard | 1750 | 1774 | | | |
| Slate | White | Soft | 1774 | 1782 | | | |
| Little Lime | " | Hard | 1782 | 1794 | | | |
| Pencil Cave | Black | Soft | 1794 | 1804 | | | |
| Blue Monday | White | Hard | 1804 | 1822 | | | |
| Big Lime | " | " | 1822 | 1914 | | | |
| Big Injun Sand | " | " | 1914 | 2014 | Gas | 1921' | |
| Slate&Shells | Black | Soft | 2014 | 2019 | Gas | 1989-1994' | |
| Squaw Sand | White | Hard | 2019 | 2040 | | | |
| Slate&Shells | " | Hard&Soft | 2040 | 2225 | | | |
| Gents Sand | " | Hard | 2225 | 2290 | | | |
| Slate&Lime | Dark | Soft&Hard | 2290 | 2408 | | | |
| 50 Ft. Sand | White | Hard | 2408 | 2430 | | | |
| Slate&Shells | Dark | Soft&Hard | 2430 | 2490 | | | |
| Pink Rock | Pink | Soft | 2490 | 2500 | | | |
| Slate&Shells | White | Soft&Hard | 2500 | 2613 | | | |
| Stray Sand | " | Hard | 2613 | 2630 | | | |
| Slate | Black | Soft | 2630 | 2634 | | | |
| Gordon Sand | " | Hard | 2634 | 2643 | Little Gas | 2638' | |
| Slate | Dark | Soft | 2643 | 2683 | | | |
| 4th. Sand Shells | White | Hard | 2683 | 2688 | | | |
| Slate | White | Soft | 2688 | 2728 | | | |
| Slate&Shells | " | Hard&Soft | 2728 | 2750 | | | |
| Lime-5th. Sand | " | Hard | 2750 | 2755 | | | |
| Slate | Black | Soft | 2755 | 2805 | | | |
| Total Depth | | | | 2805 | | | |

Date September 17, 1942. 194

APPROVED PITTSBURGH & WEST VA GAS COMPANY. Owner

By *[Signature]*
 (Title)