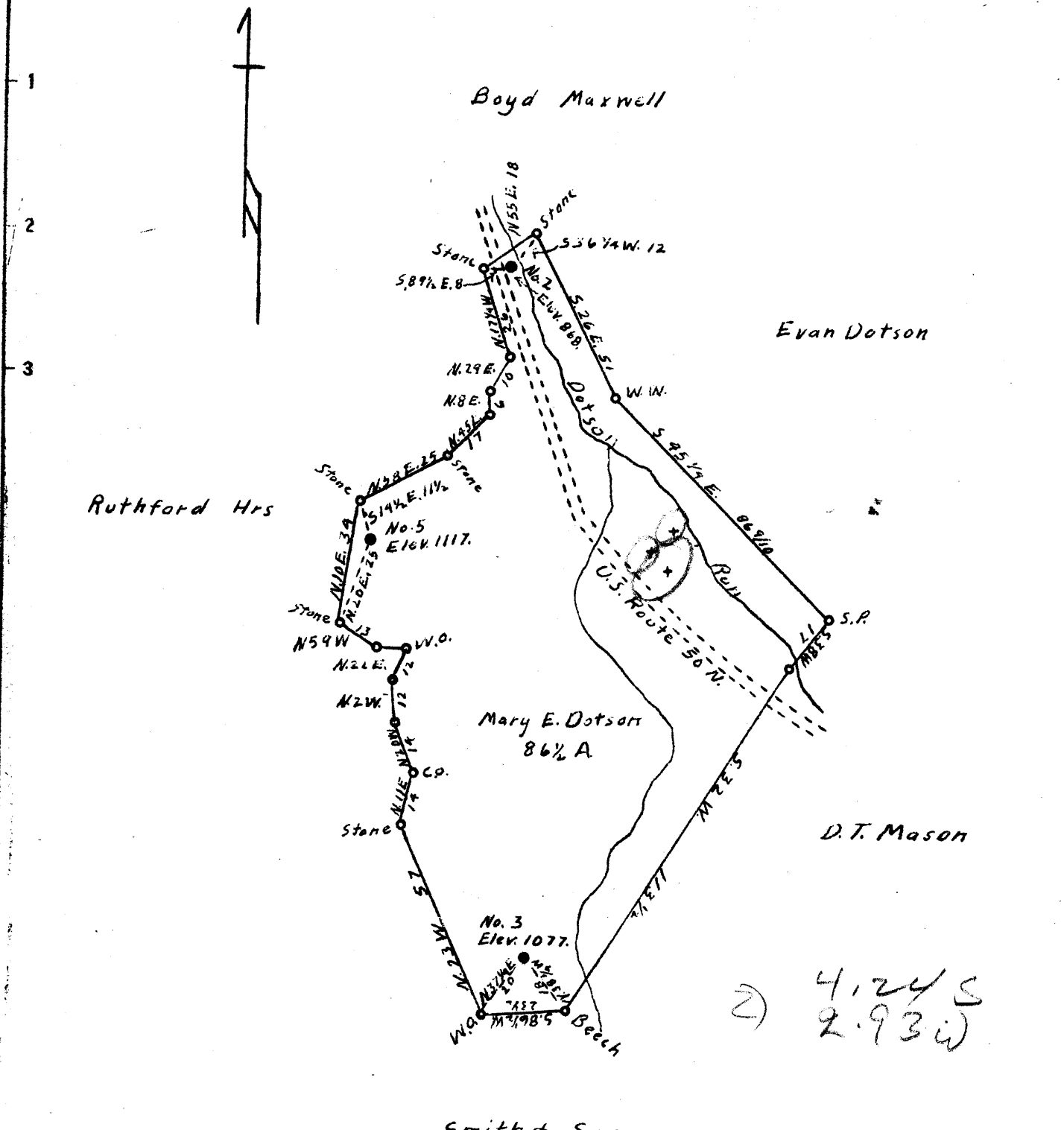


Latitude 39° 20'

Longitude 80° 50'



2) 4.24 S  
2.93 W

5) 4.40 S  
3.07 W      3) 4.53 S  
2.97 W

New Location

Drill Deeper

Abandonment  V

Company Reno Oil Co.

Address Sistersville, West Va.

Farm Mary E. Dotson

Tract \_\_\_\_\_ Acres 86 1/2 Lease No. \_\_\_\_\_

Well (Farm) No. 2-3-5 Serial No. \_\_\_\_\_

Elevation (Spirit Level) 868. - 1077. - 1117.

Quadrangle West Union

County Doddridge District Central

Engineer A. R. Westfall

Engineer's Registration No. Co. Surveyor, Ritchie Co.

File No. \_\_\_\_\_ Drawing No. \_\_\_\_\_

Date June 3, 1892 Scale 1" = 40 Poles

STATE OF WEST VIRGINIA  
DEPARTMENT OF MINES  
OIL AND GAS DIVISION  
CHARLESTON

**WELL LOCATION MAP**  
FILE NO. DOD-409-A - #2

+ Denotes location of well on United States Topographic Maps, scale 1 to 62,500, latitude and longitude lines being represented by border lines as shown.

- Denotes one inch spaces on border line of original tracing.