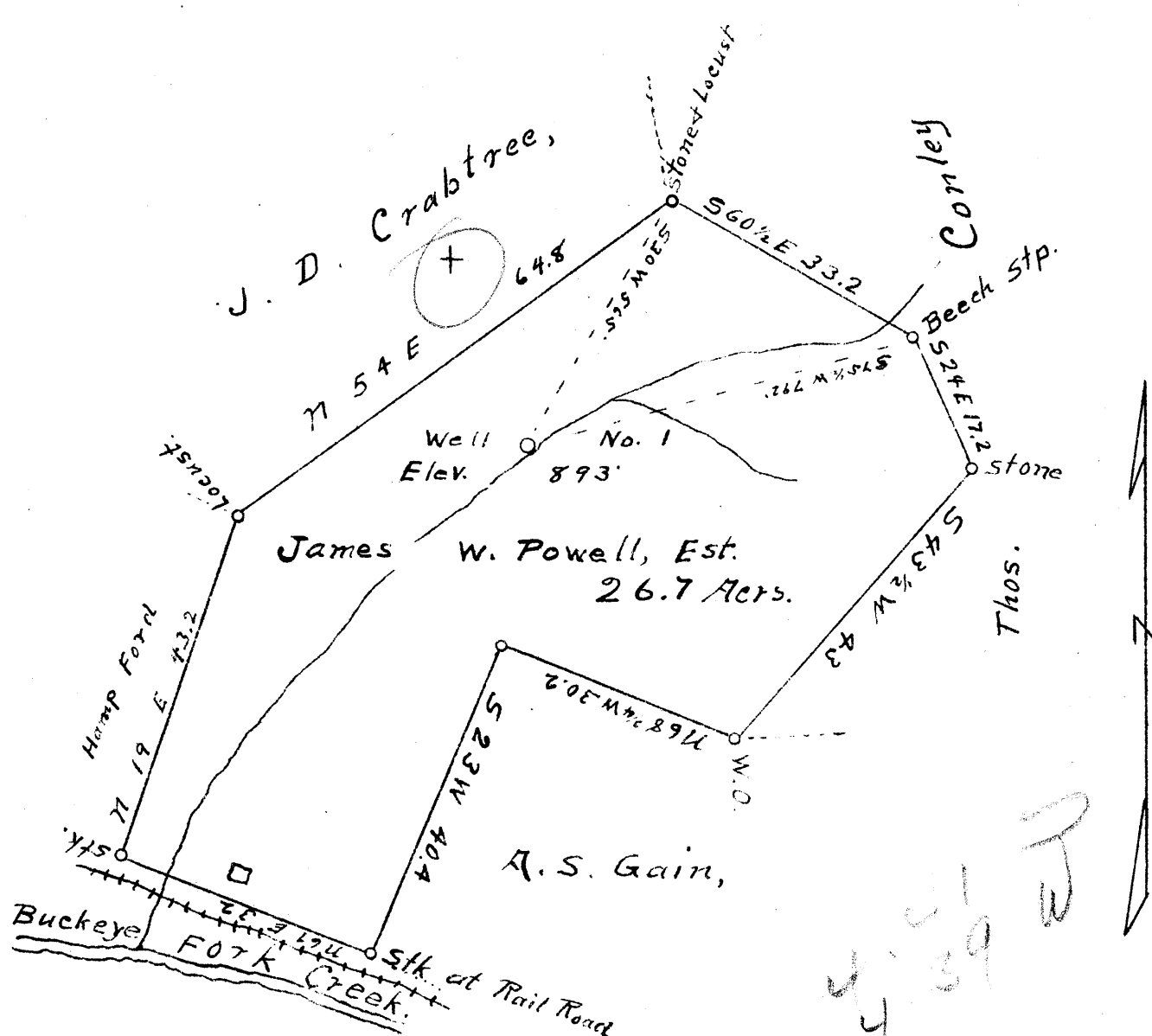


Latitude 39° 20'

Longitude 80° 35'



New Location   
 Drill Deeper   
 Abandonment

75 200 U.S. scale 15' to 1"   
 0.985391730 983.865   
 2.16 W 803730 4.39 W

Company C. E. Gribble Farr,  
 Address West Union, W. Va.  
 Farm James W. Powell, Est.  
 Tract One Acres 26.7 Lease No. \_\_\_\_\_  
 Well (Farm) No. 1 Serial No. \_\_\_\_\_  
 Elevation (Spirit Level) 893  
 Quadrangle Centerpoint  
 County Doddridge District Grant<sup>3</sup>  
 Engineer J. M. Martin  
 Engineer's Registration No. 84  
 File No. \_\_\_\_\_ Drawing No. \_\_\_\_\_  
 Date Nov 26 1941 Scale 20 P = 1"

STATE OF WEST VIRGINIA  
 DEPARTMENT OF MINES  
 OIL AND GAS DIVISION  
 CHARLESTON

**WELL LOCATION MAP**  
 FILE NO. DOD-375A  
 (use 01542562)

+ Denotes location of well on United States Topographic Maps, scale 1 to 62,500, latitude and longitude lines being represented by border lines as shown.

- Denotes one inch spaces on border line of original tracing.