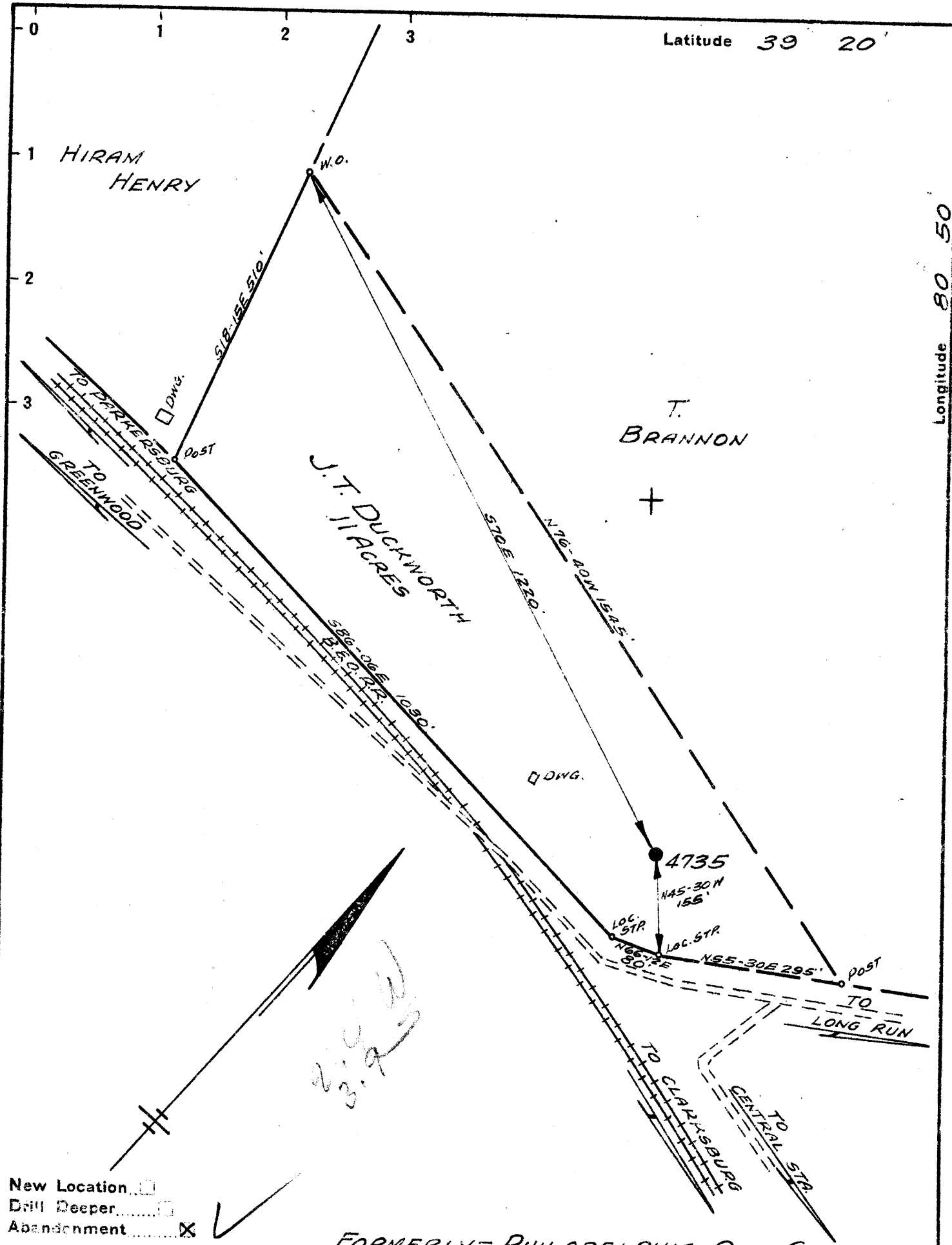


711



Company GEORGE JACKSON GAS CO.

Address CLARKSBURG, W.VA.

Farm J.T. DUCKWORTH

Tract _____ Acres 11 Lease No. 7490

Well (Farm) No. TWO Serial No. 4735

Elevation (Spirit Level) 922' VA.

Quadrangle WEST UNION S.W. 4E

County DODDRIDGE District CENTRAL

Engineer Paul W. Cunningham

Engineer's Registration No. _____

File No. V-98. P-11 Drawing No. _____

Date MAY 27, 1941 Scale 1" = 200'

STATE OF WEST VIRGINIA
DEPARTMENT OF MINES
OIL AND GAS DIVISION
CHARLESTON

1523
1715
107

WELL LOCATION MAP
FILE NO. DOD-365A
4735

+ Denotes location of well on United States Topographic Maps, scale 1 to 62,500, latitude and longitude lines being represented by border lines as shown.

- Denotes one inch spaces on border line of original tracing.