

Latitude 39 20

Longitude 80 50

WM. DOAK

FRANK SMITH

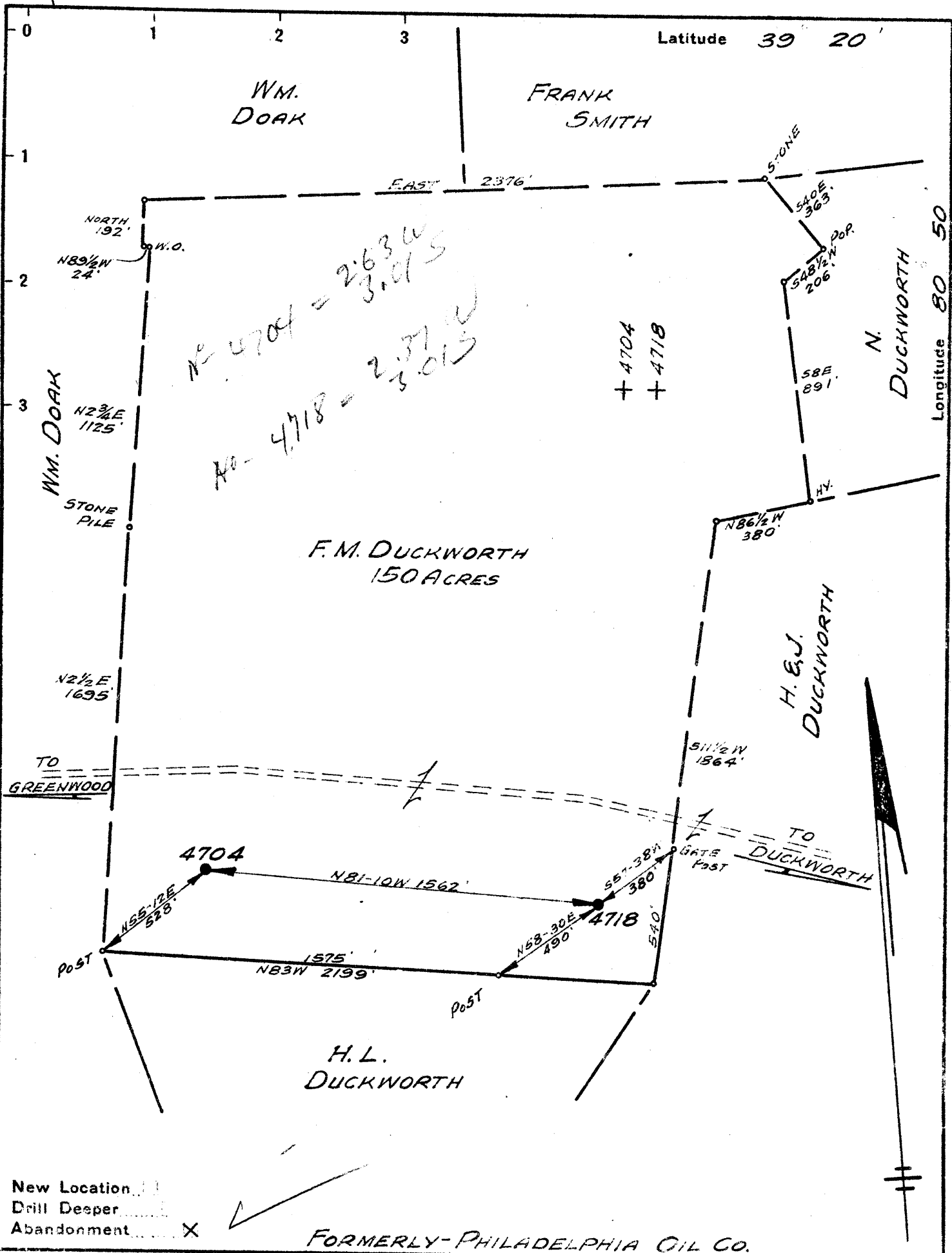
WM. DOAK

N. DUCKWORTH

H. & J. DUCKWORTH

F. M. DUCKWORTH  
150 ACRES

H. L. DUCKWORTH



Company GEORGE JACKSON GAS CO.  
 Address CLARKSBURG, W. VA.  
 Farm F. M. DUCKWORTH  
 Tract \_\_\_\_\_ Acres 166 Lease No. 15920  
 Well (Farm) No. 1 & 2 Serial No. 4704 / 4718  
 Elevation (Spirit Level) No 1 = 1123, No 2 = 892  
 Quadrangle WEST UNION S. W. 42  
 County DODDRIDGE District CENTRAL  
 Engineer Paul W. Cunningham  
 Engineer's Registration No. \_\_\_\_\_  
 File No. V-97. P-7. Drawing No. \_\_\_\_\_  
 Date MAY 27, 1941. Scale 1" = 500'

STATE OF WEST VIRGINIA  
 DEPARTMENT OF MINES  
 OIL AND GAS DIVISION  
 CHARLESTON

100  
1576  
234

**WELL LOCATION MAP**  
 FILE NO. DOD-363A, 364A  
4704 4718

+ Denotes location of well on United States Topographic Maps, scale 1 to 62,500, latitude and longitude lines being represented by border lines as shown.

- Denotes one inch spaces on border line of original tracing.