

Latitude 39 20

Longitude 80 50

WM. DOAK

FRANK SMITH

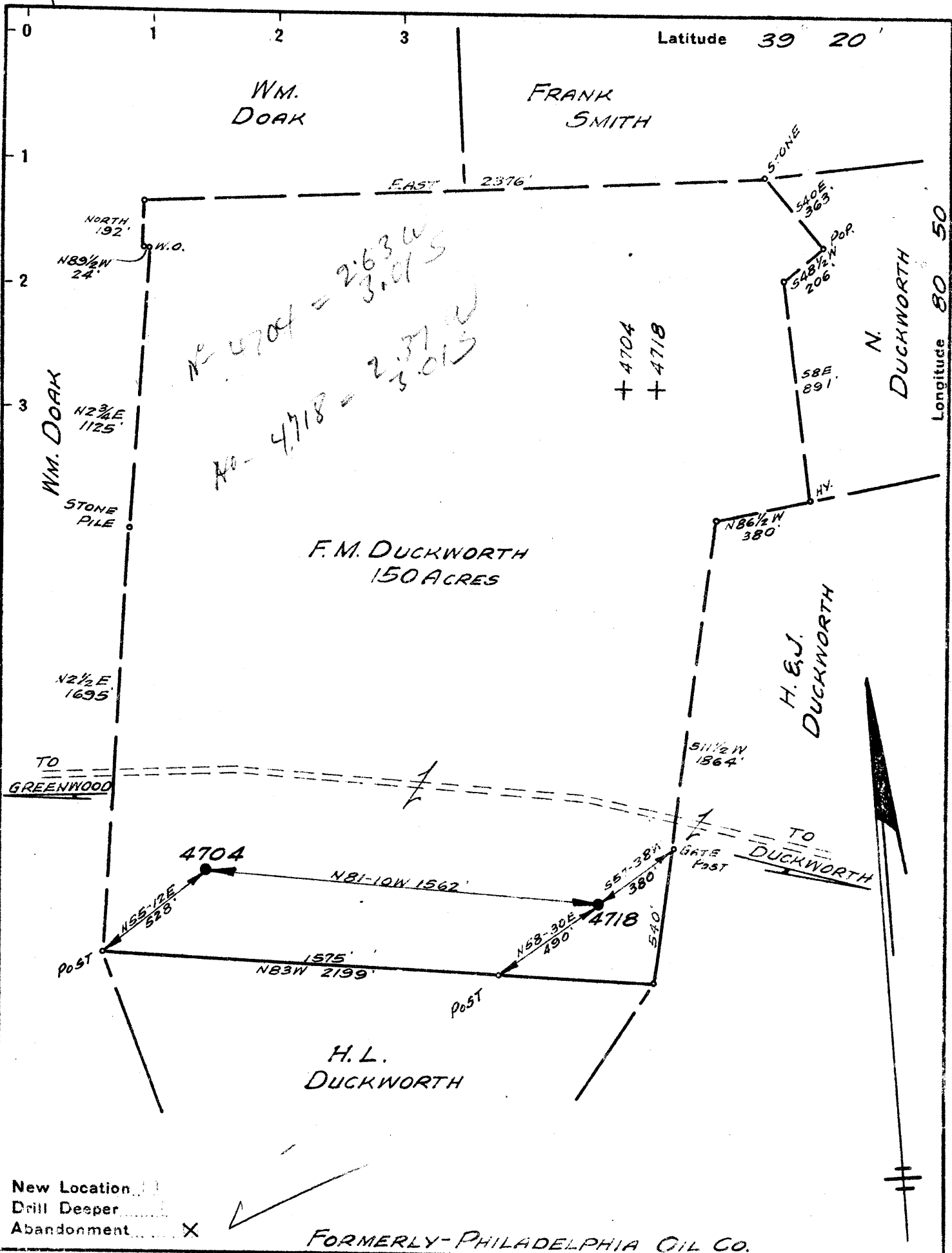
WM. DOAK

N. DUCKWORTH

H. & J. DUCKWORTH

F. M. DUCKWORTH
150 ACRES

H. L. DUCKWORTH



Company GEORGE JACKSON GAS CO.
 Address CLARKSBURG, W. VA.
 Farm F. M. DUCKWORTH
 Tract _____ Acres 166 Lease No. 15920
 Well (Farm) No. 1 & 2 Serial No. 4704 / 4718
 Elevation (Spirit Level) No. 1 = 1123, No. 2 = 892
 Quadrangle WEST UNION S. W. 42
 County DODDRIDGE District CENTRAL
 Engineer Paul W. Cunningham
 Engineer's Registration No. _____
 File No. V-97. P-7. Drawing No. _____
 Date MAY 27, 1941. Scale 1" = 500'

STATE OF WEST VIRGINIA
 DEPARTMENT OF MINES
 OIL AND GAS DIVISION
 CHARLESTON

100
1576
234

WELL LOCATION MAP
 FILE NO. DOD-363A, 364A
4704 4718

+ Denotes location of well on United States Topographic Maps, scale 1 to 62,500, latitude and longitude lines being represented by border lines as shown.

- Denotes one inch spaces on border line of original tracing.