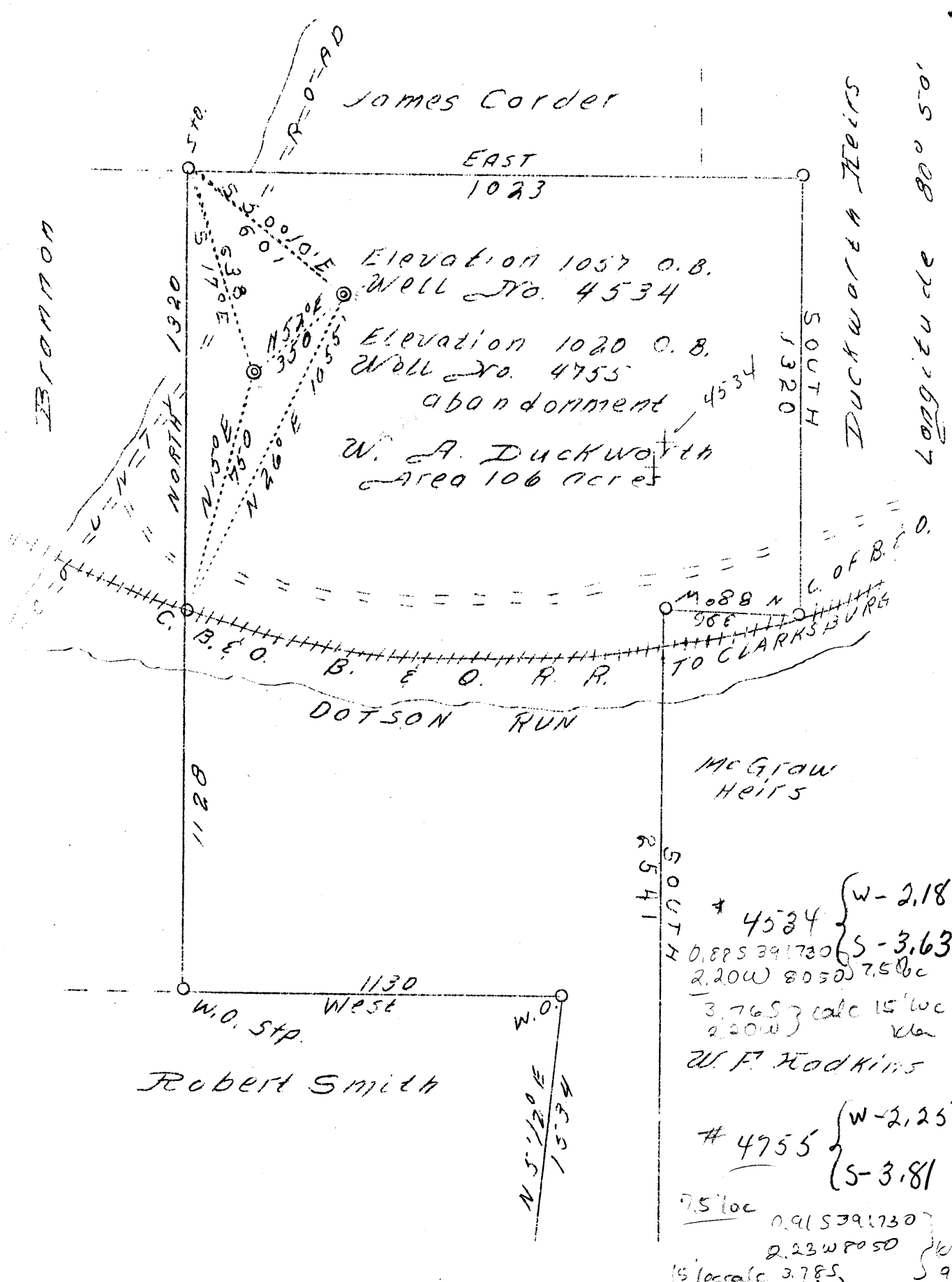


Latitude 39° 20'



Company H.E. Milliken & A.M. Snider  
 Address Waynesburg, Pa.  
 Farm W.A. Duckworth  
 Tract 1  
 Acres 106  
 Quadrangle West Union S.C.  
 District Central  
 County Doddridge  
 Eng. David Weed  
 Eng. Reg. No. 233-16-5767  
 Date 8/16/39  
 Scale 1" = 400'

STATE OF WEST VIRGINIA  
 Department of Mines  
 OIL AND GAS DIVISION  
 Charleston

WELL LOCATION MAP

File No. Dod-289-290-A  
 Well # 4534-4755

# 4534 { W-2.18  
 S-3.63  
 0.885 391730  
 2.20W 8050 7.5' loc  
 3.765 calc 15' loc  
 2.20W } W.F. Hodkins 9/3/98

# 4755 { W-2.25  
 S-3.81  
 7.5' loc  
 0.915 391730  
 2.23W 8050 } W.F. Hodkins 9/3/98  
 15' loc calc 3.785  
 2.23W

STATE OF WEST VIRGINIA  
DEPARTMENT OF MINES  
OIL AND GAS DIVISION

240

WELL RECORD

Ab 290-A  
Permit No. 290-A

Oil or Gas Well Oil  
(Kind)

Company Milliken & Snider  
Address Waynesburg, Pa.  
Farm W. A. Duckworth Acres 106  
Location (waters) Dotson Run  
Well No. 4755 Elev. 1020  
District Central County Doddridge  
The surface of tract is owned in fee by \_\_\_\_\_  
Address \_\_\_\_\_  
Mineral rights are owned by \_\_\_\_\_  
Address \_\_\_\_\_  
Drilling commenced \_\_\_\_\_  
Drilling completed 4-16-1920  
Date shot No record Depth of shot In Injun  
Open Flow /10ths Water in \_\_\_\_\_ Inch  
/10ths Merc. in \_\_\_\_\_ Inch  
Volume \_\_\_\_\_ Cu. Ft.  
Rock Pressure \_\_\_\_\_ lbs. \_\_\_\_\_ hrs.  
Oil \_\_\_\_\_ bbls., 1st 24 hrs.  
Fresh water 140 feet \_\_\_\_\_ feet  
Salt water 1425 feet \_\_\_\_\_ feet

Casing and Tubing	Used in Drilling	Left in Well	Packers
Size			
16			Kind of Packer
13			
10	No record	No record	Size of
8 1/4	1152	1152	
6 5/8	1852	1852	Depth set
5 3/16			
3			Perf. top
2	1952	1952	Perf. bottom
Liners Used			Perf. top
			Perf. bottom

CASING CEMENTED \_\_\_\_\_ SIZE \_\_\_\_\_ No. FT. \_\_\_\_\_ Date \_\_\_\_\_  
**Not cemented**  
COAL WAS ENCOUNTERED AT 600 FEET 48 INCHES  
\_\_\_\_\_ FEET \_\_\_\_\_ INCHES \_\_\_\_\_ FEET \_\_\_\_\_ INCHES  
\_\_\_\_\_ FEET \_\_\_\_\_ INCHES \_\_\_\_\_ FEET \_\_\_\_\_ INCHES

Formation	Color	Hard or Soft	Top	Bottom	Oil Gas or Water	Depth Found	Remarks
Red Clay			0	14			
Lime			14	34			
Red Rock			34	109			
Lime			109	129			
Slate			129	139			
Lime			139	164	Water	140	
Red Rock			164	364			
Sand			364	399			
Slate			399	479			
Red Rock			479	534			
Slate			534	564			
Coal			600	604			
Lime			604	624			
Red Rock			624	749			
Lime			749	799			
Red Rock			799	899			
Lime			899	920			
Red Rock			920	974			
Slate			974	989			
Red Rock			989	994			
Slate			994	1019			
Lime			1019	1065			
Sand			1065	1100			
Red Rock			1100	1126			
Big Dunkard Sand			1126	1145			
Slate			1145	1205			
Lime			1205	1240			
Slate			1240	1300			
Lime			1300	1320			
Slate			1320	1380			
First Salt Sand			1380	1435	Water	1425	
Slate			1435	1450			
Lime			1450	1475			
Third Salt Sand			1475	1615			
Slate			1615	1655			
Lime			1655	1675			
Slate			1675	1730			
Maxon Sand			1730	1800			
Slate-Shells			1800	1810			
Little Lime			1810	1822			
Pencil Cave			1822	1828			
Big Lime			1828	1907			



Formation	Color	Hard or Soft	Top	Bottom	Oil, Gas or Water	Depth Found	Remarks
Big Injun Sand			1907	1932	Oil	1916-1922	
			Total Depth-----		1932		

Date August 21, 1939

APPROVED Milliken & Snider, Owner

By A. M. Snider  
(Title)