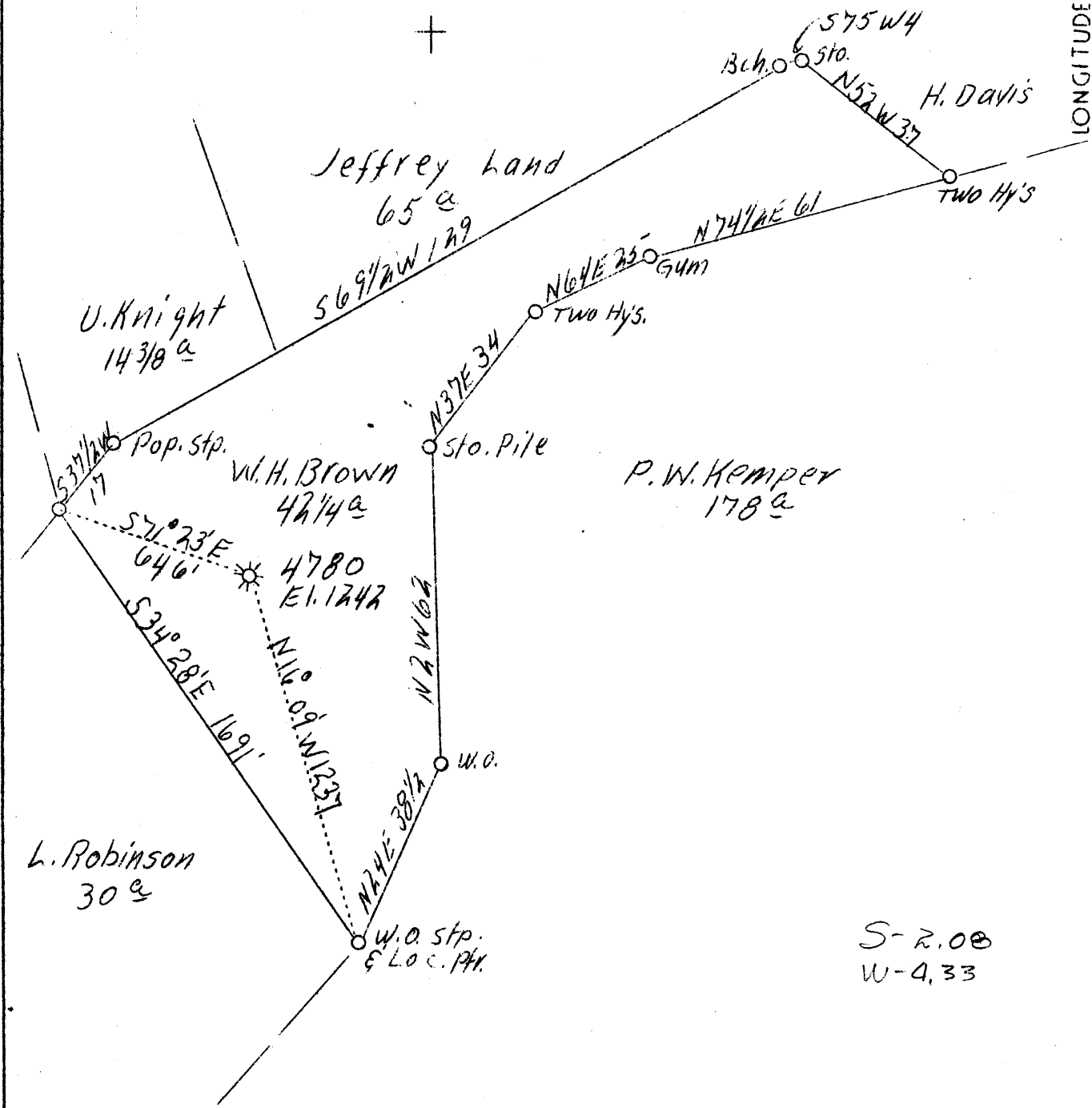


LATITUDE 39°20'

LONGITUDE 80°40'



P.W. Kemper  
178<sup>a</sup>

S-2.08  
W-4.33

H.B.D.

BK. 673 P 25

Company	Hope Nat'l Gas Co.
Address	Clarksburg, W.Va.
Farm	W.H. Brown
Acres	74
Lease No.	28371
Serial No.	4780
Well (Farm) No.	1
El. (S.L.)	1242
Quadrangle	SW Centerpoint
County	Doddridge
District	West Union
Eng.	W.M. Bowers
Eng. Reg. No.	900
Date	6/19/39
Scale	1" = 30 Pole

STATE OF WEST VIRGINIA  
Department of Mines  
OIL AND GAS DIVISION  
Charleston

WELL LOCATION MAP

File No. Mod-285-A

x Denotes location of well on U.S. Topographic Maps, scale 1 to 62,500, latitude and longitude lines being represented by border lines as shown.

- Denotes one inch spaces on border line of original tracing.

72604 on CNG maps