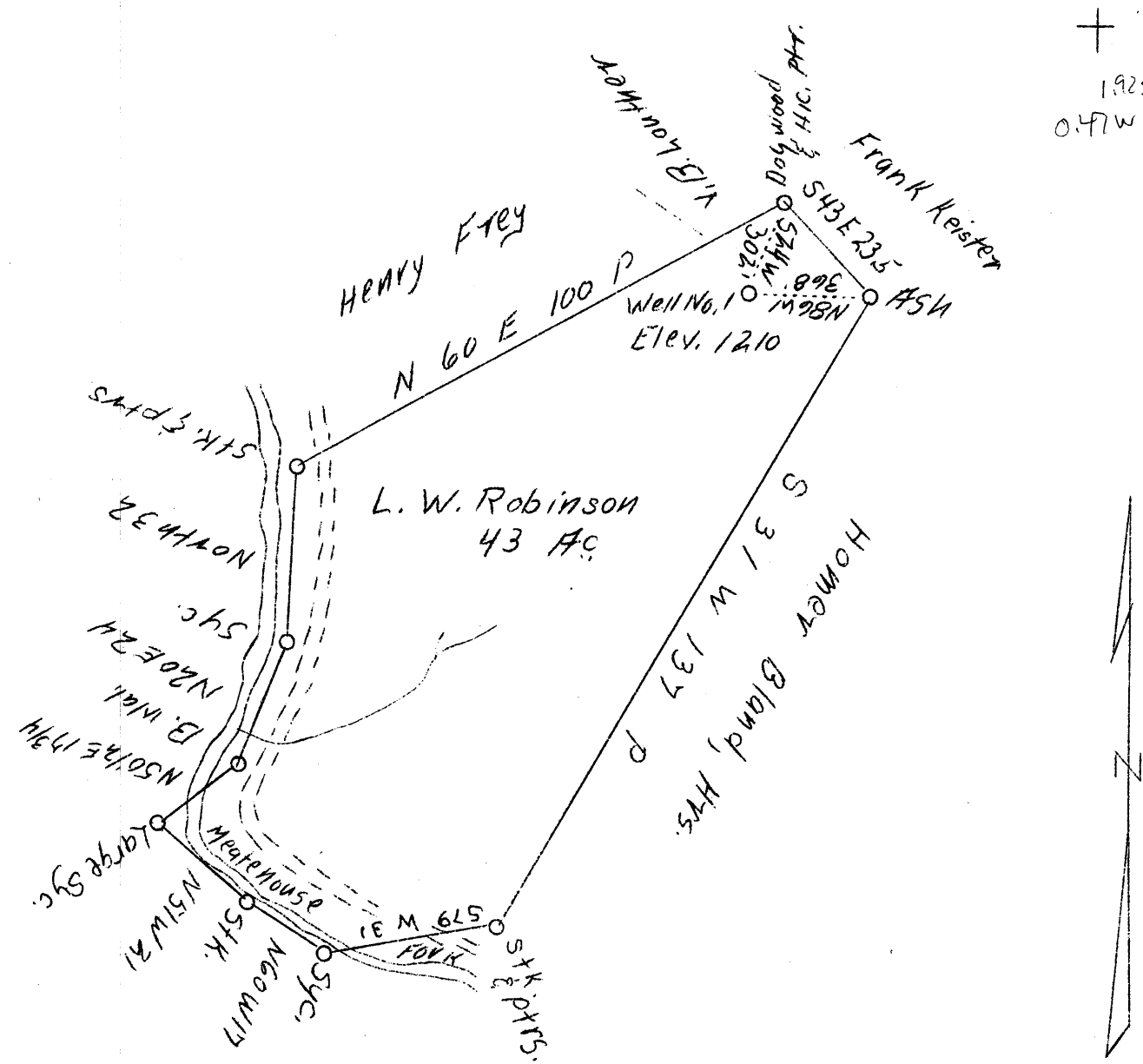


M

LATITUDE 39°15'

LONGITUDE 80°40'

1925
0.47 W



ABD.

Company	W. J. Droppleman, etal
Address	West Union, W. Va.
Farm	L. W. Robinson
Tract	One
Acres	43
Well (Farm) No.	One
Elevation (SL)	1210
Quadrangle	Vadis
County	Doddridge
District	New Milton
Engineer	J. M. Martin
Eng. Reg. No.	84
Date	May 23, 1939
Scale	30 poles - 1"

STATE OF WEST VIRGINIA
 Department of Mines
 OIL & GAS DIVISION
 Charleston

WELL LOCATION MAP

File No. 100-282-A

x Denotes location of well on U. S. Topographic Maps, scale 1 to 62,500, latitude and longitude lines being represented by border lines as shown.

- Denotes one inch spaces on border line of original tracing.