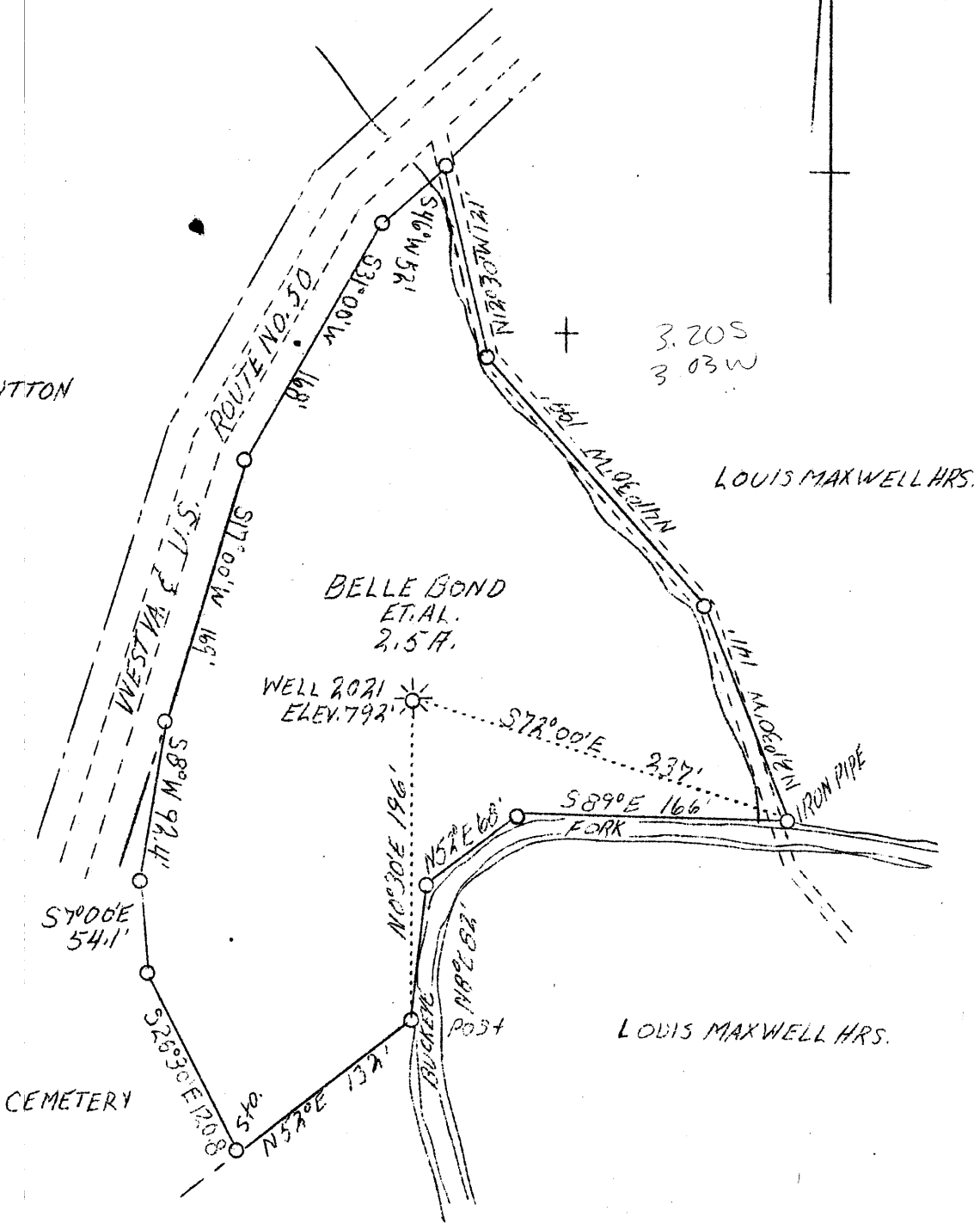


LATITUDE 39° 20'

LONGITUDE 80° 40'

T. SUTTON



WELL TO BE ABN'D

COAL OWNED BY
 BELLE BOND ET AL.
 MOLE HILL WESTVA.

Company	The Mfg. Light & HeateCo.
Address	800 Union Tr. Bldg. Pittsburgh, Pa.
Farm	Belle Bond et al
Tract	1
Acres	2.5
Lease No.	6370
Serial No.	2021
Well(Farm)No.	1
El.(S. L.)	792
Quadrangle	Centerpoint <u>S.W.</u>
County	Doddridge
District	West Union
Eng.	A.J.Russell
Date	4/12/39
Scale	1" - 100'

STATE OF WEST VIRGINIA
 Department of Mines
 OIL AND GAS DIVISION
 Charleston

WELL LOCATION MAP

File No. Dod-281-A

x Denotes location of well on U.S. Topographic Maps, scale 1 to 62,500, latitude and longitude lines being represented by border lines as shown.

- Denotes one inch spaces on border line of original tracing.

STATE OF WEST VIRGINIA
DEPARTMENT OF MINES
OIL AND GAS DIVISION

222

WELL RECORD

Permit No. 281-A

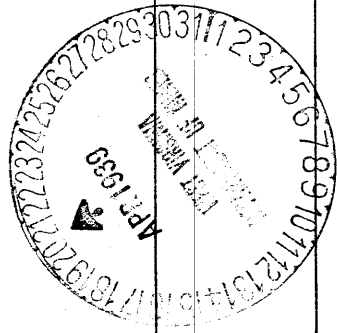
Oil or Gas Well Gas
(Kind)

Company The Manufacturers Light & Heat Co.
Address Pittsburgh, Penna.
Farm B. F. Bond Acres 2.5
Location (waters).....
Well No. 1 - 2021 Elev. 792'
District West Union County Doddridge
The surface of tract is owned in fee by B. F. Bond
Address Smithburg, WVa.
Mineral rights are owned by The Mfrs. Light & Heat Co.
800 Union Trust Bldg Address Pittsburgh, Pa.
Drilling commenced Purchased 9-11-16 (no record)
Drilling completed.....
Date shot..... Depth of shot.....
Open Flow /10ths Water in..... Inch
/10ths Merc. in..... Inch
Volume..... Cu. Ft.
Rock Pressure..... lbs..... hrs.
Oil..... bbls., 1st 24 hrs.
Fresh water..... feet..... feet
Salt water..... feet..... feet

Casing and Tubing	Used in Drilling	Left in Well	Packers
Size			
16.....			Kind of Packer.....
13.....			
10.....			Size of.....
8 1/4.....			
6 5/8.....		1590	Depth set.....
5 3/16.....			
3.....			Perf. top.....
2.....			Perf. bottom.....
Liners Used.....			Perf. top.....
			Perf. bottom.....

CASING CEMENTED..... SIZE..... No. FT..... Date.....
COAL WAS ENCOUNTERED AT **135** FEET **48** INCHES
..... FEET..... INCHES..... FEET..... INCHES
..... FEET..... INCHES..... FEET..... INCHES

Formation	Color	Hard or Soft	Top	Bottom	Oil Gas or Water	Depth Found	Remarks
Record oriented from Hope Natural Gas Company well No. 1104 located 400 feet East.							
		Pittsburgh Coal		135 - 139			
		Salt Sand		1240			
		Maxton Sand		1387 - 1417	Show of Gas		
		Big Injun		1560 - 1650	" " "		
		Gordon Stray		2215			
		Gordon Sand		2228 - 2240	Gas		
		Casing Record		6 5/8" 1590 feet.			



Formation	Color	Hard or Soft	Top	Bottom	Oil, Gas or Water	Depth Found	Remarks

Date April 19th, 1939

APPROVED THE MANUFACTURERS LIGHT & HEAT CO, Owner

By Harry H. Fowler
Land Dept. (Title) Office Manager.