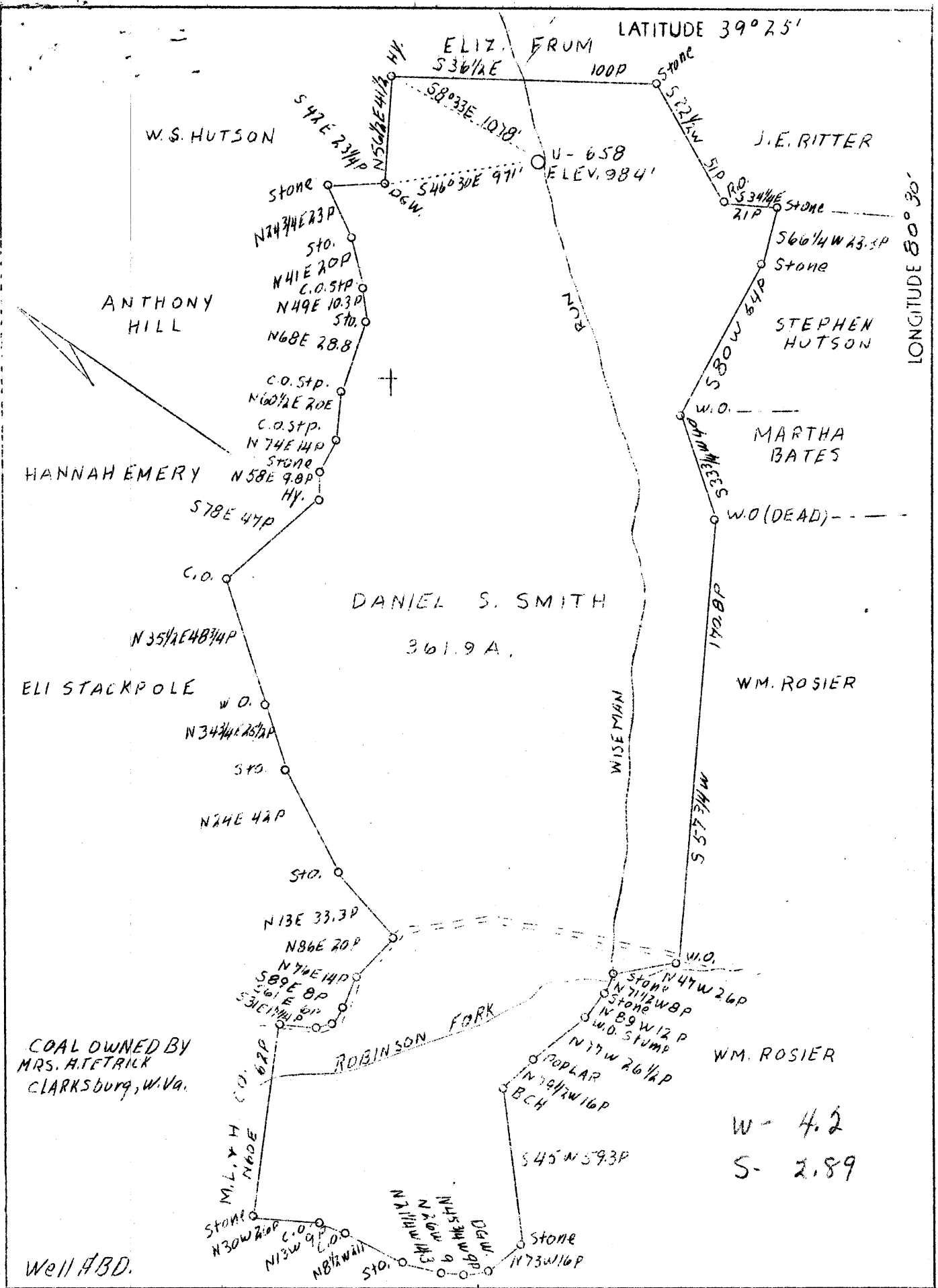


M



COAL OWNED BY
MRS. A. FETRICK
CLARKSBURG, W. Va.

W- 4.2
S- 2.89

Well ABD.

| | |
|-----------------|---|
| Company | Union Gasoline & Oil Corp. |
| Address | 209 Riley Law Bldg. Wheeling, W. Va. |
| Farm | Daniel S. Smith |
| Tract | 1 |
| Acres | 361.9 |
| Lease No. | 2796 |
| Well (Farm) No. | 3 |
| Serial No. | U-658 |
| El. (S. L.) | 984' ^{Point EC} |
| Quadrangle | Center N.E. 1/4 |
| County | Doddridge |
| District | McClellan |
| Eng. | J.C. Mercer |
| Eng. Reg. No. | |
| Drawing No. | Y-8-198 |
| Date - 1/25/39 | Scale - 1" - 800' |

STATE OF WEST VIRGINIA
Department of Mines
OIL AND GAS DIVISION
Charleston

WELL LOCATION MAP
File No. Dod-276-A

x Denotes location of well on U.S. Topographic Maps, scale 1 to 62,500, latitude and longitude lines being represented by border lines as shown.

- Denotes one inch spaces on border line of original tracing.

WEST VIRGINIA DEPARTMENT OF MINES
OIL AND GAS DIVISION

477

WELL RECORD

Permit No. ~~577~~

Oil or Gas Well Oil
(Kind)

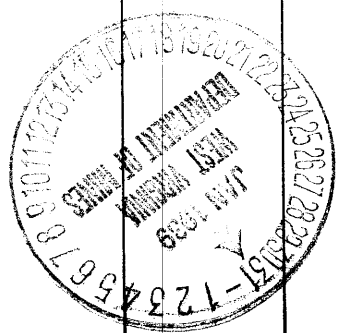
Company Union Gasoline & Oil Corporation
 Address 209 Riley Law Bldg., Wheeling, W. Va.
 Farm D. S. Smith Acres 370
 Location (waters) _____
 Well No. 3 - 658 Elev. 984 ft.
 District McClellan County Doddridge
 The surface of tract is owned in fee by Will E Morris
221 Goff Building Address Clarksburg, WV
 Mineral rights are owned by Union Gasoline & Oil Corp
209 Riley Law Bldg Address Wheeling, W. Va.
 Drilling commenced Jan. 20, 1905
 Drilling completed Apr. 14, 1905
 Date shot _____ Depth of shot _____
 Open Flow /10ths Water in _____ Inch
 _____ /10ths Merc. in _____ Inch
 Volume _____ Cu. Ft.
 Rock Pressure _____ lbs. _____ hrs.
 Oil _____ bbls., 1st 24 hrs.
 Fresh water _____ feet _____ feet
 Salt water _____ feet _____ feet

| Casing and Tubing | Used in Drilling | Left in Well | Packers |
|-------------------|------------------|--------------|----------------|
| Size | | | |
| 16 | | | Kind of Packer |
| 13 | | | |
| 10 | 230 | | Size of |
| 8 1/4 | 1183 | | |
| 6 5/8 | 2000 | 2000 | Depth set |
| 5 3/16 | 2120 | 2120 | |
| 3 | | | Perf. top |
| 2 | | | Perf. bottom |
| Liners Used | | | Perf. top |
| | | | Perf. bottom |

CASING CEMENTED _____ SIZE _____ No. FT. _____ Date _____
 COAL WAS ENCOUNTERED AT 670 FEET 120 INCHES
 _____ FEET _____ INCHES _____ FEET _____ INCHES
 _____ FEET _____ INCHES _____ FEET _____ INCHES

| Formation | Color | Hard or Soft | Top | Bottom | Oil Gas or Water | Depth Found | Remarks |
|-----------------|-------|--------------|------|--------|------------------|-------------|---------|
| Conductor | | | 14 | | | | |
| Pittsburgh Coal | | | 670 | 680 | | | |
| Little Dunkard | | | 1095 | 1140 | | | |
| Big Dunkard | | | 1175 | 1225 | | | |
| Gas Sand | | | 1275 | 1350 | | | |
| Salt Sand | | | 1510 | 1520 | | | |
| Maxon Sand | | | 1770 | 1800 | | | |
| Little Lime | | | 1910 | 1925 | | | |
| Pencil Cave | | | 1925 | 1935 | | | |
| Big Lime | | | 1935 | 2000 | | | |
| Big Injun | | | 2000 | 2120 | | | |
| Gordon Sand | | | 2751 | 2775 | | | |
| Fourth Sand | | | 2775 | 2800 | | | |
| Total depth | | | | 2801 | | | |

2000' - 6 5/8"
 Gas at 2015 - Oil 2102 to 2118
 Gas at 2756 to 2770



6692

McClellan District, Doddridge County, W. Va.
 By Union Gasoline & Oil Corp., 209 Riley Law Bldg., Wheeling, W. Va.
 Abandoned under permit ~~525~~ (?)

On 370 acres.

Elevation, 984' L.

Surface owned by Will E. Morris, 221 Geff Bldg., Clarksburg, W. Va.,
 and minerals by Union Gasoline & Oil Corp., 209 Riley Law Bldg.,
 Wheeling, W. Va.

Drilling commenced Jan. 20, 1905; completed Apr. 14, 1905.

10" casing, 230' (pulled); 8 1/2", 1183' (pulled); 6 1/2", 2000'; 5", 2120'.
 Coal was encountered at 670-680'.

Oil well. Abandonment reported to Dept. of Mines Jan. 25, 1939.
 Record to ~~DOT~~ from Mrs. Griffith Nov. 26, 1947. Old File No. 477.

| | Top. | Bottom. |
|---|------|---------|
| Conductor | 0 | 14 |
| Pittsburgh Coal | 670 | 680 |
| Little Dunkard Sand | 1095 | 1140 |
| Big Dunkard Sand | 1175 | 1225 |
| Gas Sand | 1275 | 1350 |
| Salt Sand | 1510 | 1520 |
| Maxton Sand | 1770 | 1800 |
| Little Lime | 1910 | 1925 |
| Pencil Cave | 1925 | 1935 |
| Big Lime | 1935 | 2000 |
| Big Injun Sand (gas at 2015') (oil at 2102-2118') | 2000 | 2120 |
| Gordon Sand (gas at 2756' to 2770') | 2751 | 2775 |
| Fourth Sand | 2775 | 2800 |
| Total depth | | 2801 |