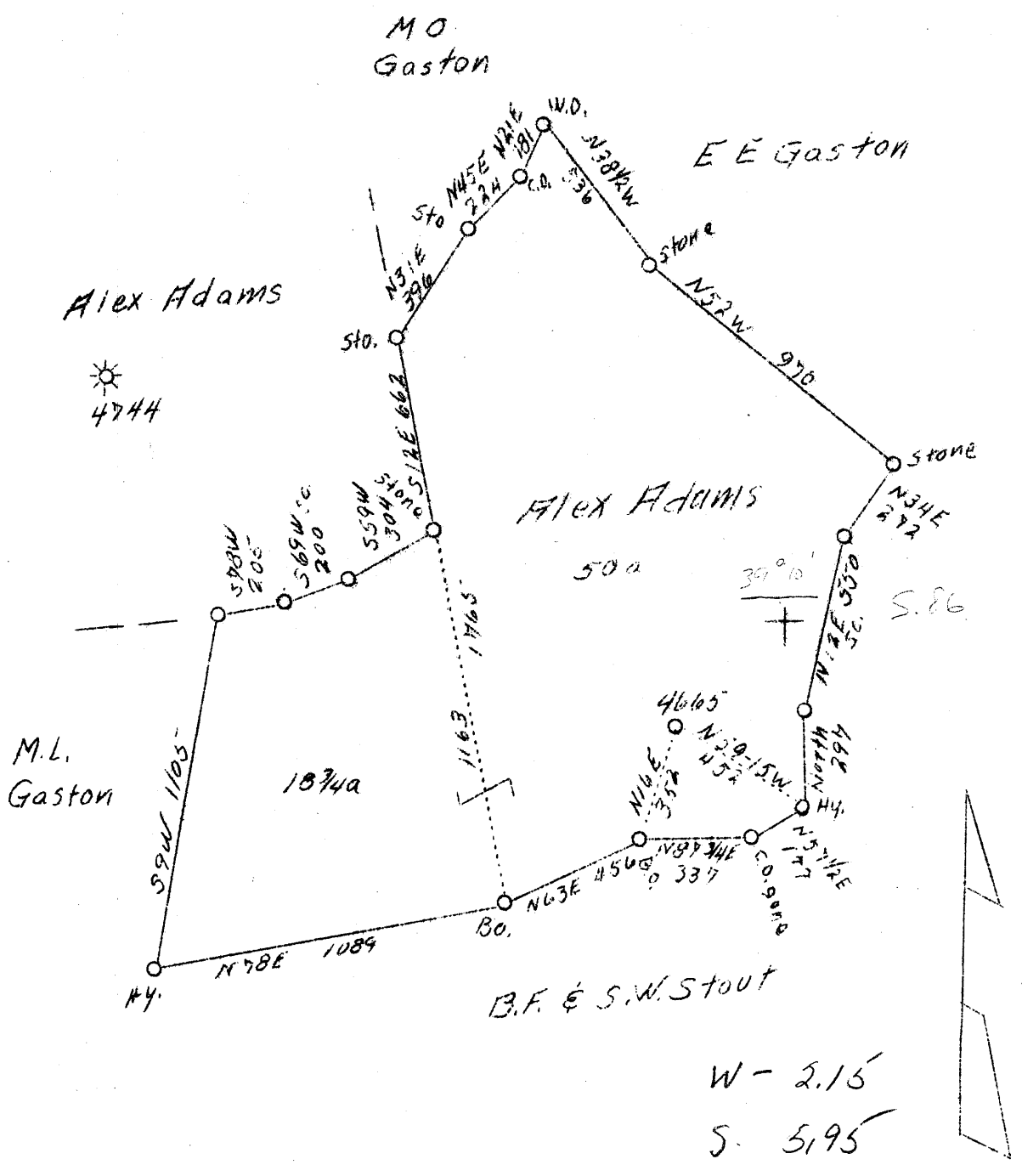


9M

LATITUDE 39°15'

LONGITUDE 80°45'



A130. Formerly Pittsburgh & W. Va. Gas Co.

Company	Israel H. Beren
Address	Marietta, Ohio
Farm	Alex Adams
Acres	68-3/4
Lease No.	7459
Well (Farm) No.	One
Serial No.	4665
Elevation (SL)	1159-L
Quadrangle	Holbrook N. E. 4-1
County	Doddridge
District	Southwest
Engineer	F. E. Bridgen
Eng. Reg. No.	764
Date	Aug. 29, 1938
Scale	1" - 500'

STATE OF WEST VIRGINIA
 Department of Mines
 OIL & GAS DIVISION
 Charleston

WELL LOCATION MAP

File No. Dod-263-A

x Denotes location of well on U. S. Topographic Maps, scale 1 to 62,500, latitude and longitude lines being represented by border lines as shown.

- Denotes one inch spaces on border line of original tracing.

73261 on CNE map

WEST VIRGINIA DEPARTMENT OF MINES
OIL AND GAS DIVISION

206

WELL RECORD

Permit No. AP-263-A-

Oil or Gas Well. Gas
(Kind)

Company Israel H. Beren
Address Marietta, Ohio
Farm Alexander Adams Acres 93.25
Location (waters) Holbrook N/E 4-1
Well No. 4665 Elev. 1159
District Southwest County Doddridge
The surface of tract is owned in fee by _____
Address _____
Mineral rights are owned by _____
Address _____
Drilling commenced September 16th, 1918
Drilling completed October 24th, 1918
Date shot _____ Depth of shot _____
Open Flow /10ths Water in _____ Inch
/10ths Merc. in _____ Inch
Volume 151,000 Cu. Ft.
Rock Pressure 580 lbs. 13 hrs.
Oil _____ bbls., 1st 24 hrs.
Fresh water _____ feet _____ feet
Salt water _____ feet _____ feet

Casing and Tubing	Used in Drilling	Left in Well	Packers
Size			Kind of Packer
16			
13 <u>Wood</u>	<u>16'</u>		
10			Size of
8 1/4	<u>923'</u>	<u>923'</u>	
6 5/8	<u>1877'</u>	<u>1877'</u>	Depth set
5 3/16			
3	<u>2054'</u>	<u>2054'</u>	Perf. top
2			Perf. bottom
Liners Used			Perf. top
			Perf. bottom

CASING CEMENTED _____ SIZE _____ No. FT. _____ Date _____

COAL WAS ENCOUNTERED AT _____ FEET _____ INCHES
_____ FEET _____ INCHES FEET _____ INCHES
_____ FEET _____ INCHES FEET _____ INCHES

Formation	Color	Hard or Soft	Top	Bottom	Oil Gas or Water	Depth Found	Remarks
Red Rock	Red	Soft	0	25			
Sand	Light	Soft	25	75			
Red Rock	Red	Soft	75	95			
Sand	Light	Hard	95	150			
Lime & R. R.			150	330			
Sand	Light	Hard	330	355			
Lime	Light	Hard	355	385			
Sand	Light	Hard	385	425			
Red Rock	Red	Soft	425	450			
Lime & R. R.			450	575			
Red Rock		Soft	575	675			
Lime & Sand		Hard	675	750			
Slate	Light	Soft	750	850			
Lime	Shells	Hard	850	935			
Slate	Light	Soft	935	1005			
Big Dunkard	Light	Soft	1005	1048			
Slate	Dark	Soft	1048	1055			
Sand	Light	Hard	1055	1088			
Slate	Light	Soft	1088	1128			
Lime	Light	Hard	1128	1153			
Slate	Light	Soft	1153	1225			
Sand Gas	Light	Soft	1225	1260			
Slate	Light	Soft	1260	1300			
Slate		Hard	1300	1400			
Lime	Light	Hard	1400	1450			
Slate	Dark	Soft	1450	1510			
1st Salt	Light	Hard	1510	1535			
Slate	Dark	Soft	1535	1555			
2nd Salt	Light	Hard	1555	1610	Show gas	1580'	
Slate	Dark	Soft	1610	1675			
3rd Salt	Light	Hard	1675	1736	Show gas	1716'	
Slate	Dark	Soft	1736	1843			
Blue Monday	Dark	Hard	1843	1869	Gas	1865'	
Big Lime	Light	Hard	1869	1924			
Big Ingun	Dark	Hard	1924	2006	Gas	1934'	
Slate	Dark	Soft	2006	2054			
Total Depth	- - - -	- - - -	- - - -	2054			



