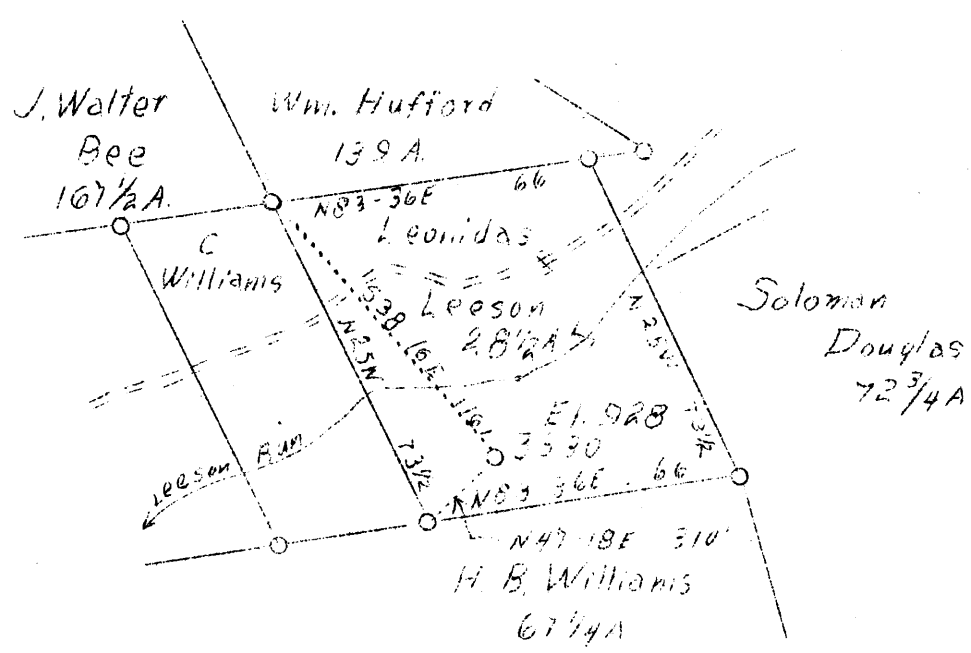


LATITUDE 39° 15'

LONGITUDE 80° 50'



2.1 W
.24 S

ABD.

F.B. 665 P. 21 514 WIS SHP 107

Company	Hope Const. & Ref. Co.
Address	Clarksburg, W. Va.
Farm	Leonidas Leeson
Acres	142
Lease No.	5641
Well (Farm) No.	Two
Serial No.	3330
Elevation (SP)	928
Quadrangle	Holbrook N.C
County	Doddridge
District	Central
Engineer	W. M. Bowers
Eng. Reg. No.	900
Date	Sept. 22, 1938
Scale	1" - 40 poles

STATE OF WEST VIRGINIA
Department of Mines
OIL & GAS DIVISION
Charleston

WELL LOCATION MAP

File No. 100-250-A

x Denotes location of well on U. S. Topographic Maps, scale 1 to 62,500, latitude and longitude lines being represented by border lines as shown.

- Denotes one inch spaces on border line of original tracing.